

# ALDRSHOT VILLAGE RESIDENCE

## 540 Plains Road East, Burlington

### Halton Community Housing Corporation

#### NEW Rental Units for ages 65 years and older

Halton Community Housing Corporation will be opening its doors to a new development for all ages 65+ in November of 2011.

**2 Bedroom market rent units available at \$1,047 per month plus hydro, cable and underground parking. No last month's rent on approved credit (OAC).**

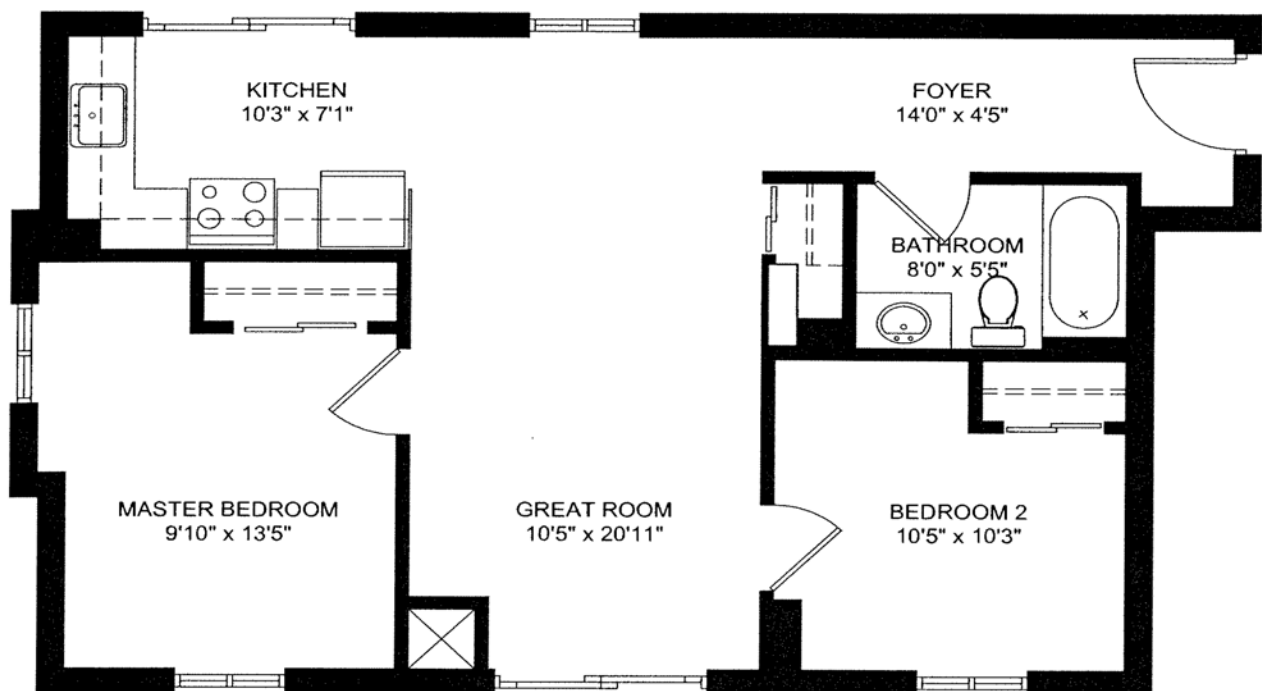


## Building Features

- On-site laundry facilities
- Underground parking
- Energy efficient Climate Control – heating and air conditioning in each unit
- Fridge and stove included
- Enhanced security system
- Standard units: Ceramic tiles throughout with upgraded carpet in bedroom
- Amenity room with private terrace
- Bicycle racks

Located close to shopping and The Royal Botanical Gardens, with a branch of the Burlington Public Library on the ground floor.

### Type K: Two-Bedroom Unit Layout



TYPE K  
SCALE: 1/4" = 1'-0"

UNIT SIZE: 807 SF



For more information call Megan at 905-825-6000 extension 4448 or Access Halton at 1-866-4HALTON (1-866-442-5866) or dial 311 within Halton.

[http://www.halton.ca/living\\_in\\_halton/housing/](http://www.halton.ca/living_in_halton/housing/)

