

# Energy efficient lighting programs

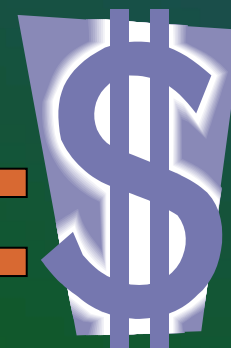
Burlington Hydro Inc.



INDECO 

# CDM strategy

- Home Developers program – new residential customers
- Lighting Retrofit program – commercial, industrial and municipal customers
- Lighten Your Electricity Bill - existing residential customers
- Distribution System optimization



INDECO

**BHI**  
Burlington Hydro Inc.

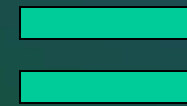
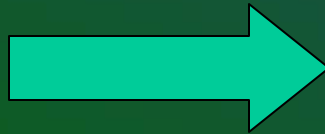
# Home Developers program



INDECO 

**BHI**  
Burlington Hydro Inc.

# Program description



# Incentive

## ➤ What is the incentive for?

- Energy efficient lighting installed in single family units
- Energy efficient lighting installed in multi-residential units and common areas

## ➤ What is the level of the incentive?

- A maximum of \$100 per residential unit including common areas

# Types of lighting

- **Examples of lighting and controls will include:**
  - Compact Fluorescent Lightbulbs (CFL) – 11- 27w
  - Flood light – 26w
  - Metal halide fixture – 39w, 100w
  - Outdoor light timer
  - Motion detector
  - 3w LED exit light
  - Daylight and occupancy sensor controls

# Potential savings

- If 1400 new single family homes were built in Burlington in 2006 the installation of CFLs, which use 75% less electricity than incandescent light bulbs, could save up to 1420 MWh of electricity

An average Canadian household consumes 1350 kWh of electricity per year for lighting (Office of Energy Efficiency)

# How to participate

Sign up

Install energy efficient lighting

Submit BHI forms and proof of purchase for verification

Receive financial incentive

# Sign up

- Builders sign up when they have a good estimate of the types and quantity of lighting and controls to be installed
- Sign up and information sheets are available in BHI website under forms
- Incentive dollars based on sign up sheet will be held for the builder for 90 days

# Benefits of participation

- Receive a financial incentive for installing energy efficient lighting
- Reduce operating costs of units
- Save electricity and reduce demand on provincial electricity supply
- Marketing device to purchasers/renters

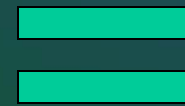
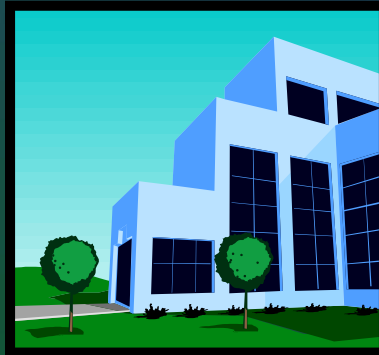
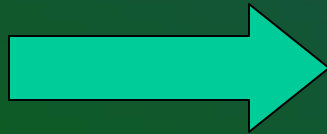
# Lighting Retrofit program



INDECO 

**BHI**  
Burlington Hydro Inc.

# Program description



# Program partners

Lighting retrofit companies:

Nexstar Lighting



Sage Environmental



# Incentive

## ➤ What is the incentive for?

- Replacing existing lighting with energy efficient lighting in commercial, industrial and municipal operations and facilities

## ➤ What is the level of the incentive?

- \$150 per kW for one year's savings up to a maximum level.
- For the less than 50kW customers, the maximum level of the incentive is \$5,000; for the greater than 50kW customers, the maximum incentive level is \$20,000.

# Types of lighting

## ➤ Examples of the types of lighting include:

- T8 32W (38-42W)
- 2lamp T8 32W (58W)
- 4lamp T8 32W (112W)
- 6lamp T8 32W (202-226W)
- 8lamp T8 32W (275-302W)
- 4lamp T5-HO 54W (232W)
- 6lamp T5-HO 54W (342W)
- 18W CFL fixture w/EM ballast
- Occupancy Sensor Control (private office - 1200 W controlled)
- 3W LED EXIT Sign

# Potential savings

- The retrofit of the Burlington Hydro building resulted in an annual kWh reduction of 254,853 kWh, and an annual demand reduction of 51.69 kW (a 2.4 year payback)

# How to participate

Contact program partners and sign up



Participate in energy efficient lighting retrofit



Submit BHI forms and proof of purchase for verification



Receive financial incentive

# Benefits of participation

- Receive a financial incentive for replacing energy efficient lighting
- Reduce operating costs of building/facility
- Improve quality of lighting in building/facility
- Save electricity and reduce demand on provincial electricity supply

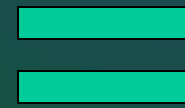
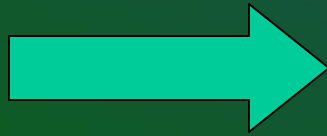
# Lighten Your Electricity Bill program



INDECO 



# Program description



# Incentive

## ➤ What is the incentive for?

- Purchase of energy efficient products from Canadian Tire

## ➤ What is the level of the incentive?

- The level of the incentive depends on the product being purchased, for example,
  - *Compact fluorescent light bulbs - \$3/pack*
  - *Indoor lighting and appliance timers - \$1/timer*
  - *LED seasonal lights - \$5/pack*

# Potential savings

- It is estimated that, on average, home lighting represents 6% of total energy costs.
- CFLs can use up to 75% less electricity and they last years longer (or a reduction of close to 4% in energy bills).

# How to participate

Cut out coupon from bill insert



Purchase energy efficient product at Canadian Tire



Redeem coupon



Save electricity

# Benefits of participation

- Receive a financial incentive for installing energy efficient products
- Save electricity and reduce demand on provincial electricity supply

# For more information

<b>Home Developers</b>	<ul style="list-style-type: none"><li>• See information sheets and forms on the Burlington Hydro website</li></ul>
<b>Lighting retrofit</b>	<ul style="list-style-type: none"><li>• See program flyers</li><li>• Contact program partners (Sage and Nexstar)</li></ul>
<b>Lighten Your Electricity Bill</b>	<ul style="list-style-type: none"><li>• Watch for coupons in your electricity bill</li></ul>

# Distribution System Optimization

- BHI switching recommendation for loss reduction, total of 10 changes will provide a saving of 59Kw under average system load conditions and 189KW under system peak load conditions
- Capacitor bank installations to improve power factor and loss reduction
- Area conversions to the higher system voltage of 27.6KV in existing 4.16KV and 13.8KV system