

# NOTICE OF PUBLIC INFORMATION CENTRE #1

## MUNICIPAL CLASS ENVIRONMENTAL ASSESSMENT STUDY

Steeles Avenue (Regional Road 8) Transportation Corridor Improvements  
Tremaine Road (Regional Road 22) to Industrial Drive  
Town of Milton  
Our File: PR-3131A

### Study

Halton Region has initiated a Municipal Class Environmental Assessment (MCEA) Study for Steeles Avenue (Regional Road 8) from Tremaine Road (Regional Road 22) to Industrial Drive, in the Town of Milton. The MCEA Study will consider a wide range of road improvement alternatives as well as intersection improvements, active transportation and overall traffic operations. The impact of road improvements on social, cultural, economic and natural environments will also be evaluated and assessed during the study.

### Process

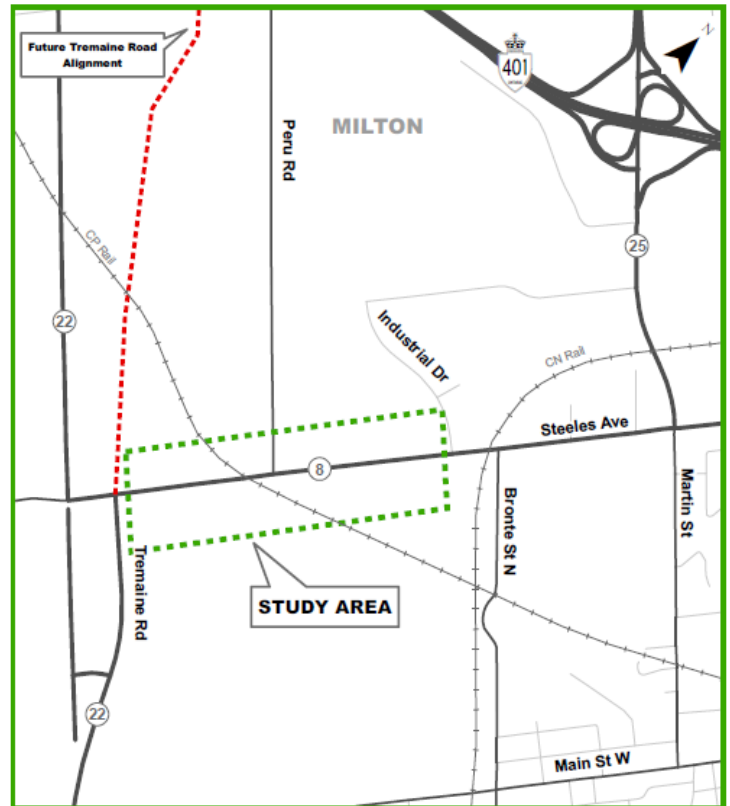
The study is being conducted in compliance with Schedule C of the Municipal Class Environmental Assessment (October 2000, amended 2007, 2011 and 2015), which is approved under the *Ontario Environmental Assessment Act*. A key component of the study will be consultation with interested stakeholders (public and regulatory agencies) through Public Information Centres. The first Public Information Centre has been arranged for:

**Date:** Thursday, November 21, 2019  
**Time:** Drop-in between 6:30 and 8:30 p.m.  
**Location:** Milton Town Hall, Milton Room  
150 Mary Street, Milton, ON L9T 6Z5

The purpose of the PIC is to review and obtain public input on the problems being addressed, background information and the alternative solutions being considered. Anyone with an interest in this study is invited to attend and participate.

### Comments

If you are unable to attend the Public Information Centre and would like to provide comments, please forward them by Friday, December 6, 2019 to either project team member. For more information on this project, please visit the project website at [halton.ca](http://halton.ca)



The map shows the approximate limits of the study area.  
This notice first issued November 7, 2019.

**Mr. Jeffrey Reid, C.E.T., LET**  
Project Manager  
Halton Region  
1151 Bronte Road  
Oakville, ON L6M 3L1  
Phone: 905-825-6000 ext. 7920  
Email: [jeffrey.reid@halton.ca](mailto:jeffrey.reid@halton.ca)

**Mr. Jim Dowell, P. Eng.**  
Project Manager  
WSP  
610 Chartwell Road, Suite 300  
Oakville, ON L6J 4A5  
Phone: 905-829-6244  
Email: [jim.dowell@wsp.com](mailto:jim.dowell@wsp.com)

