

## NOTICE OF STUDY COMMENCEMENT

### MUNICIPAL CLASS ENVIRONMENTAL ASSESSMENT STUDY Steeles Avenue (Regional Road 8) Transportation Corridor Improvements Tremaine Road (Regional Road 22) to Industrial Drive, Town of Milton PR-3131A

#### Study

Halton Region is initiating a Municipal Class Environmental Assessment (MCEA) Study for Steeles Avenue (Regional Road 8) from Tremaine Road (Regional Road 22) to Industrial Drive, in the Town of Milton. The need for additional capacity in the Steeles Avenue Corridor was identified in the Region's Transportation Master Plan – The Road to Change.

To address both public safety and the future 2031 travel demand along Steeles Avenue, a number of road improvement alternatives will be examined as part of this Municipal Class Environmental Assessment Study. Road improvements, such as active transportation, and intersection operations as well as structural, drainage, cross-sectional and natural environment requirements will be assessed through the study.

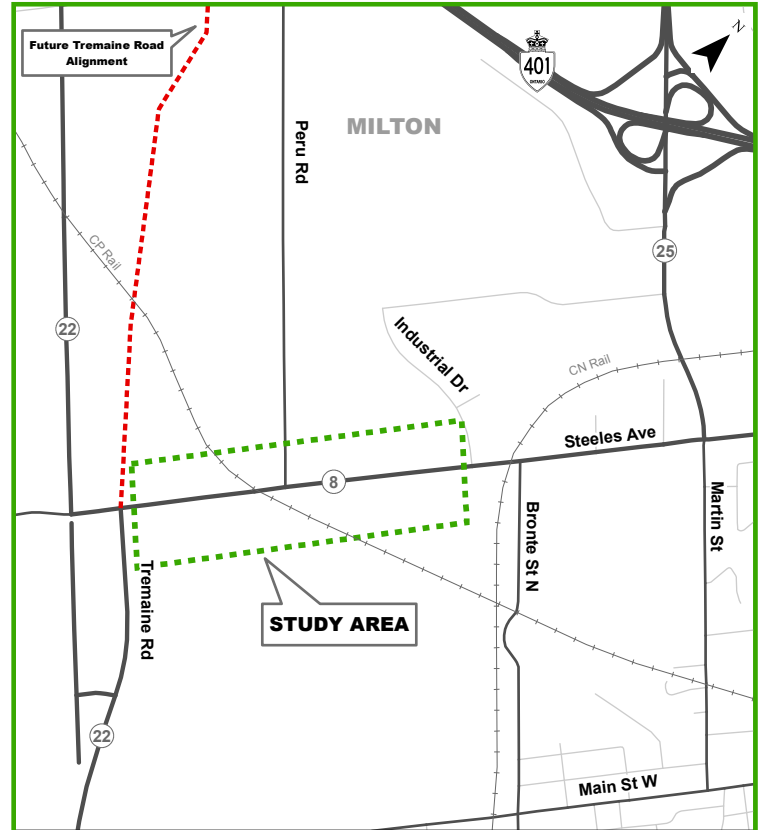
#### Process

This notice signals the commencement of the MCEA Study, which will define the problem, identify and evaluate alternative solutions, and determine a preferred solution in consultation with the Town of Milton, regulatory agencies and the public. This Study is being conducted in compliance with Schedule C of the *Municipal Class Environmental Assessment* (October 2000, amended 2007, 2011 and 2015), which is approved under the *Ontario Environmental Assessment Act*.

Public and review agency consultation is a key element of the MCEA process and input will be sought throughout this study. Details regarding the forthcoming Public Information Centre (PIC) will be advertised as the study progresses. Upon completion of the study, an Environmental Study Report (ESR) will be prepared and placed on the public record for a minimum 30-day review period. The document will detail the planning and consultation process and the preferred alternative.

#### Comments

Comments received through the course of the study will be considered and documented in the MCEA Study Report. Additional information related to the study and consultation process may be obtained through the website: [halton.ca/EAProjects](http://halton.ca/EAProjects)



The map shows the approximate limits of the study area.

Please contact either of the following project team members listed below if you have questions or would like to provide comments on this Study.

**Mr. Jeffrey Reid, C.E.T., LET**  
Project Manager  
Halton Region  
1151 Bronte Road  
Oakville, Ontario L6M 3L1  
Phone: 905-825-6000 ext.7920  
Email: [jeffrey.reid@halton.ca](mailto:jeffrey.reid@halton.ca)

**Mr. Neil Ahmed, P. Eng.**  
Project Manager  
WSP|MMM Group  
610 Chartwell Road, Suite 300  
Oakville, Ontario L6J 4A5  
Phone: 905-829-6241  
Email: [AhmedN@mmm.ca](mailto:AhmedN@mmm.ca)

This notice first issued June 1, 2017.