

NOTICE OF PUBLIC INFORMATION CENTRE #2 - ONLINE

MUNICIPAL CLASS ENVIRONMENTAL ASSESSMENT STUDY

Steeles Avenue (Regional Road 8) Transportation Corridor Improvements
Tremaine Road (Regional Road 22) to Industrial Drive
Town of Milton | Our File: PR-3131A

Study

Halton Region is undertaking a Municipal Class Environmental Assessment (MCEA) Study for Steeles Avenue (Regional Road 8) from Tremaine Road (Regional Road 22) to Industrial Drive, in the Town of Milton. The MCEA Study is considering a wide range of road improvement alternatives, as well as intersection improvements, active transportation and overall traffic operations. The impact of road improvements on social, cultural, economic and natural environments are also being evaluated and assessed during the study.

Process

The study is being conducted in compliance with Schedule C of the Municipal Class Environmental Assessment (October 2000, amended 2007, 2011 and 2015), which is approved under the *Ontario Environmental Assessment Act*.

A key component of the study is consultation with interested stakeholders (members of the public and regulatory agencies) through Public Information Centres (PICs). The first PIC was held on November 21, 2019.

The purpose of the second and final PIC is to present and obtain public input on the design components and evaluation process, as well as the preliminary preferred design.

Members of the public can visit the online consultation webpage on **halton.ca** to view pre-recorded videos about the study, provide input through an online comment form and learn more. The online PIC will be available starting on:

Date: April 15, 2021
Virtual: halton.ca/For-Residents/Opportunities-to-Participate

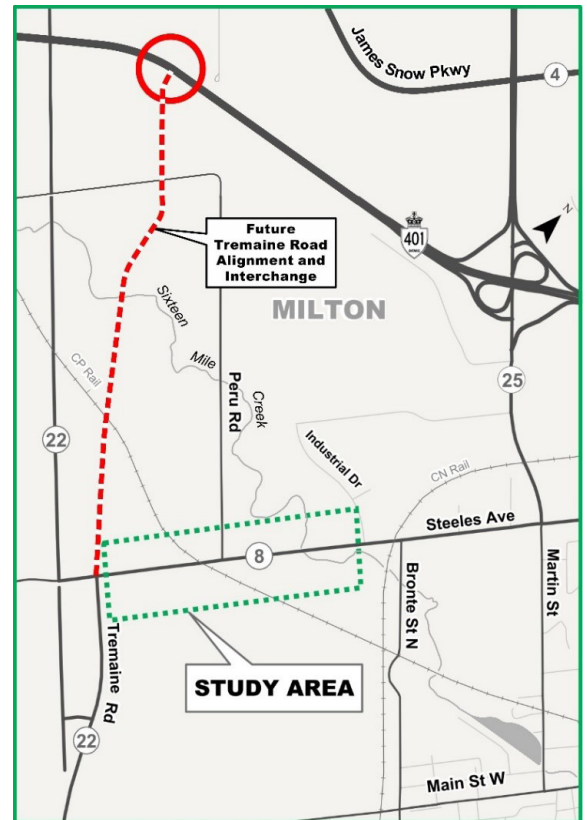
We ask that specific feedback related to this PIC be submitted by **May 17, 2021** using the online form.

Comments

If you are unable to review the PIC material online or require this information in an alternate format, please contact a Project Team member below. For more information on this project, please visit the project website at **halton.ca**.

Ms. Jessica Dorgo, P. Eng.
Project Manager
Halton Region
1151 Bronte Road
Oakville, ON L6M 3L1
905-825-6000 ext. 7556
SteelesMCEA@halton.ca

Ms. Katherine Jim, M.Eng., P.Eng.
Project Manager
WSP
610 Chartwell Road, Suite 300
Oakville, ON L6J 4A5
289-835-2511
katherine.jim@wsp.com



The map shows the approximate limits of the study area.

This notice first issued April 8, 2021.

