

HALTON REGION'S PORTFOLIO OF

Assisted Rental Housing Development Opportunities

Shovel-Ready and In Progress Projects

QUARTERLY UPDATE – SUMMER 2025



Portfolio of Shovel-Ready and In Progress Projects

Halton Region is helping to reach housing targets by bringing more assisted rental units to our community.

There is opportunity to partner with us to get **shovel-ready properties** built as fast as possible and deliver more units in the future.



Projects continue to move from shovel-ready to in progress as funding is secured.



548
SHOVEL-READY
UNITS

511
Assisted

37
Supportive

Halton Region has a long and effective history of responding to needs and delivering housing opportunities in our community. Funded by the Region and through strategic partnerships with the Development community, we have **4 projects in progress** that provide various assisted and supportive housing units.

REGIONAL & 3RD PARTY PROJECTS IN PROGRESS



42
units

42
Supportive

Halton Region has recently successfully delivered **5 projects** that provide assisted and supportive housing units to our community through Regional developments, partnership on 3rd party developments, and strategic acquisitions.

COMPLETED PROJECTS



324
units

125
Assisted

22
Supportive

177
Emergency
Supportive


Shovel-Ready Development Opportunities

3 REGIONAL

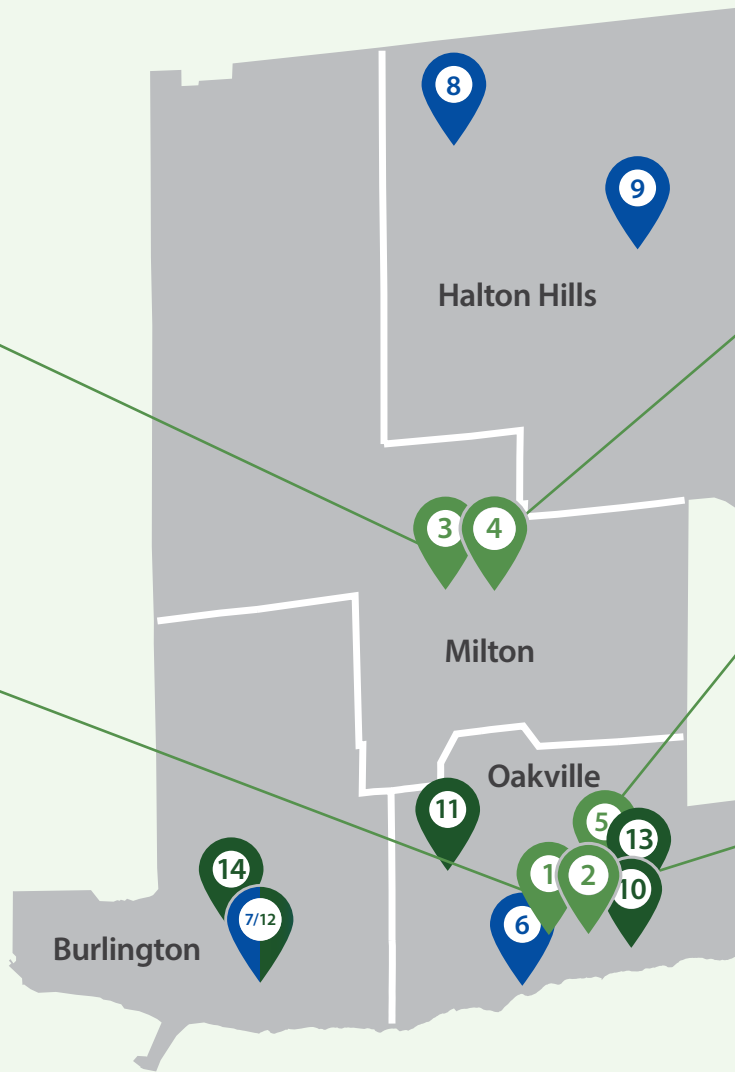


Allendale Building 1
Units: 200
Estimated cost: \$150M


1 REGIONAL



Margaret Drive
Units: 13
Estimated cost: \$11.3M



4 REGIONAL



Allendale Buildings 2 & 3
Units: 266
Estimated cost: \$192M

5 3RD PARTY



Cornwall Road
Units: 37
Estimated cost: \$27.8M

2 REGIONAL



Maurice Drive
Units: 32
Estimated cost: \$24M

IN PROGRESS PROJECTS

Regional Developments

- 6** Rebecca Street (14 units, total funding: \$10.7M)
- 7** Queensway Drive - Modular Units (4 units, total funding: \$500K)

3rd Party Developments

- 8** Maria Street (12 units, total funding: \$5.9M)
- 9** Guelph Street (12 units, total funding: \$3.8M)

COMPLETED PROJECTS

Regional Developments

- 10** Kerr Street (52 units, total funding: \$40.6M)

3rd Party Developments

- 11** Old Bronte Road (25 units, total funding: \$6.3M)

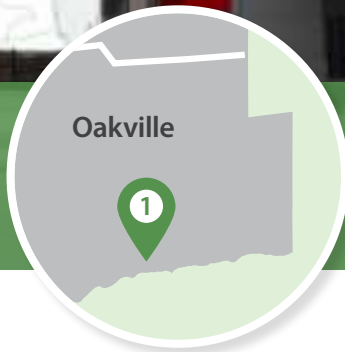
Regional Acquisitions

- 12** Queensway Drive (49 units, total funding: \$12.6M)
- 13** Normandy Place (70 units, total funding: \$19M)
- 14** Bethany Residence (128 beds, total funding: \$9.3M)

REGIONAL SHOVEL-READY DEVELOPMENT OPPORTUNITY

Helping to reach housing targets by bringing opportunity for new assisted rental units in the Halton community.

For families



Margaret Drive

363 Margaret Drive, Oakville



Building Summary

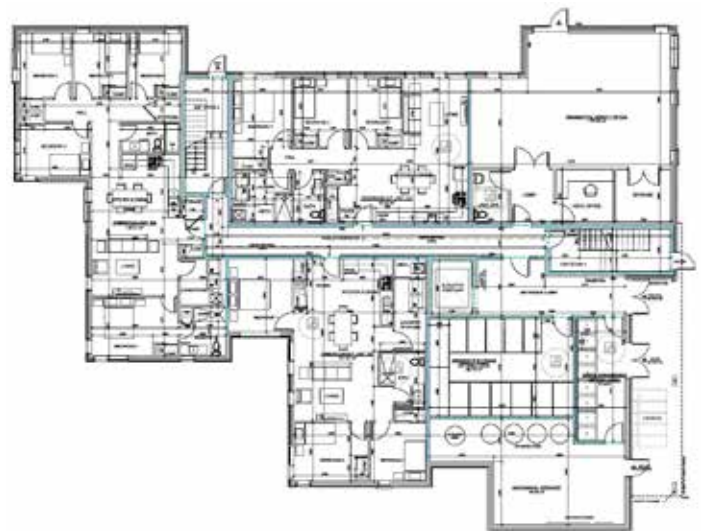
- 13 units for individuals and families
 - 5 three bedroom units
 - 5 four bedroom units
 - 3 five bedroom units
- ~1,150 square feet of community programming space

Shovel-ready

- ✓ Zoned
- ✓ Serviced

Funding status

- Regional funding: \$1.0M pre-development
- Estimated cost: \$11.3M



REGIONAL SHOVEL-READY DEVELOPMENT OPPORTUNITY

Helping to reach housing targets by bringing opportunity for new assisted rental units in the Halton community.



For families



Oakville

2

Maurice Drive

284-314 Maurice Drive, Oakville

Building Summary

- 32 units for individuals and families
 - 11 one bedroom units
 - 5 two bedroom units
 - 5 three bedroom units
 - 11 four bedroom units
- Design includes ADUs (additional dwelling units)

Shovel-ready

- ✓ Zoned
- ✓ Serviced

Funding status

- Regional Funding: \$2.5M pre-development
- Estimated cost: \$24M

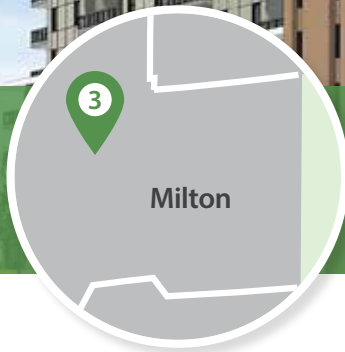


REGIONAL SHOVEL-READY DEVELOPMENT OPPORTUNITY

Helping to reach housing targets by bringing opportunity for new assisted rental units in the Halton community.



For seniors



Ontario Street (Allendale)

Building 1, Milton

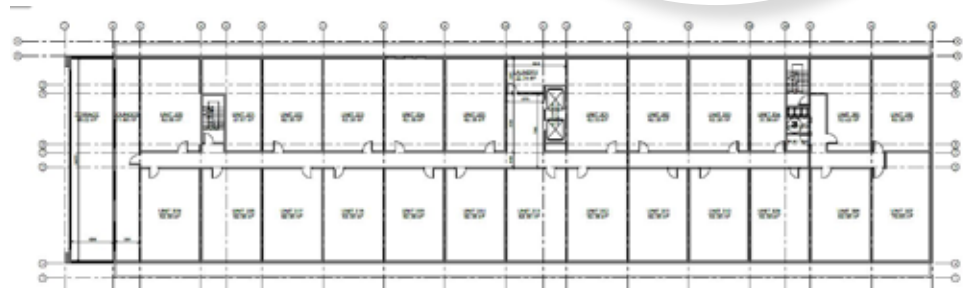


Building Summary

- 200 units for seniors
 - 44 Studios
 - 156 one bedroom units
- Potential for ground floor Community Wellness Hub

Shovel-ready

- ✓ Zoned
- ✓ Serviced



Funding status

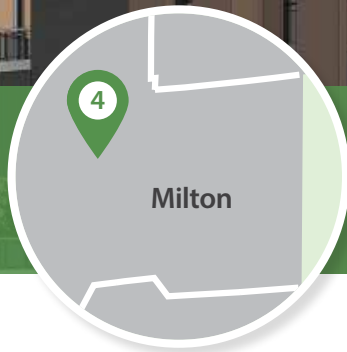
- Regional funding: \$1.2M pre-development
- Federal funding: \$75K
- Estimated cost: \$150M

REGIONAL SHOVEL-READY DEVELOPMENT OPPORTUNITY

Helping to reach housing targets by bringing opportunity for new assisted rental units in the Halton community.



For seniors



Ontario Street (Allendale)

Buildings 2 & 3, Milton

Building Summary

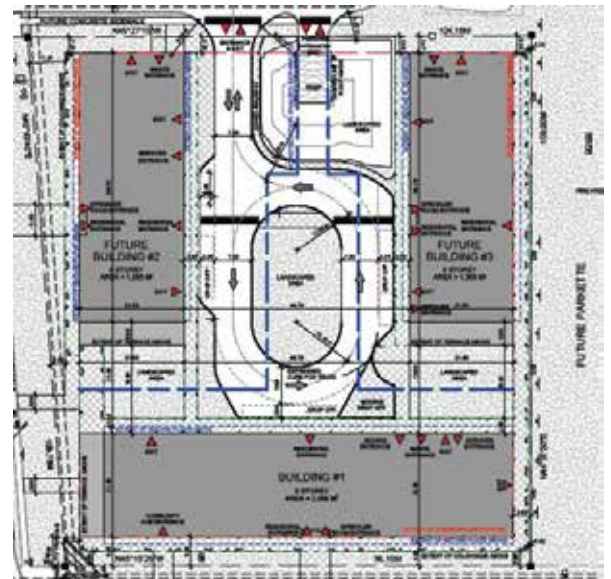
- 266 one bedroom units for seniors
- Potential for ground floor Community Wellness Hub

Shovel-ready

- ✓ Zoned
- ✓ Serviced

Funding status

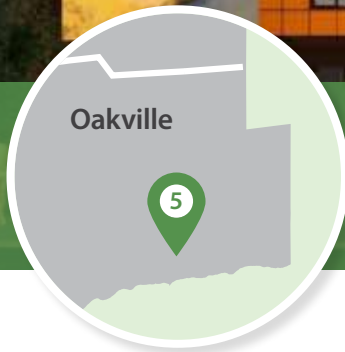
- Regional funding: \$1.3M pre-development
- Federal funding: \$75K
- Estimated cost: \$192M



3RD PARTY SHOVEL-READY DEVELOPMENT OPPORTUNITY

Helping to reach housing targets by bringing opportunity for new assisted rental units in the Halton community.

For adults



Cornwall Road (Support House)

130 Cornwall Road, Oakville



Building Summary

- 37 one bedroom units for adults
- Common area and program spaces, fully accessible one bedroom units
- On site supports 7 days a week to assist adults moving from transitional to permanent housing

Shovel-ready

- ✓ Zoned
- ✓ Serviced

Funding status

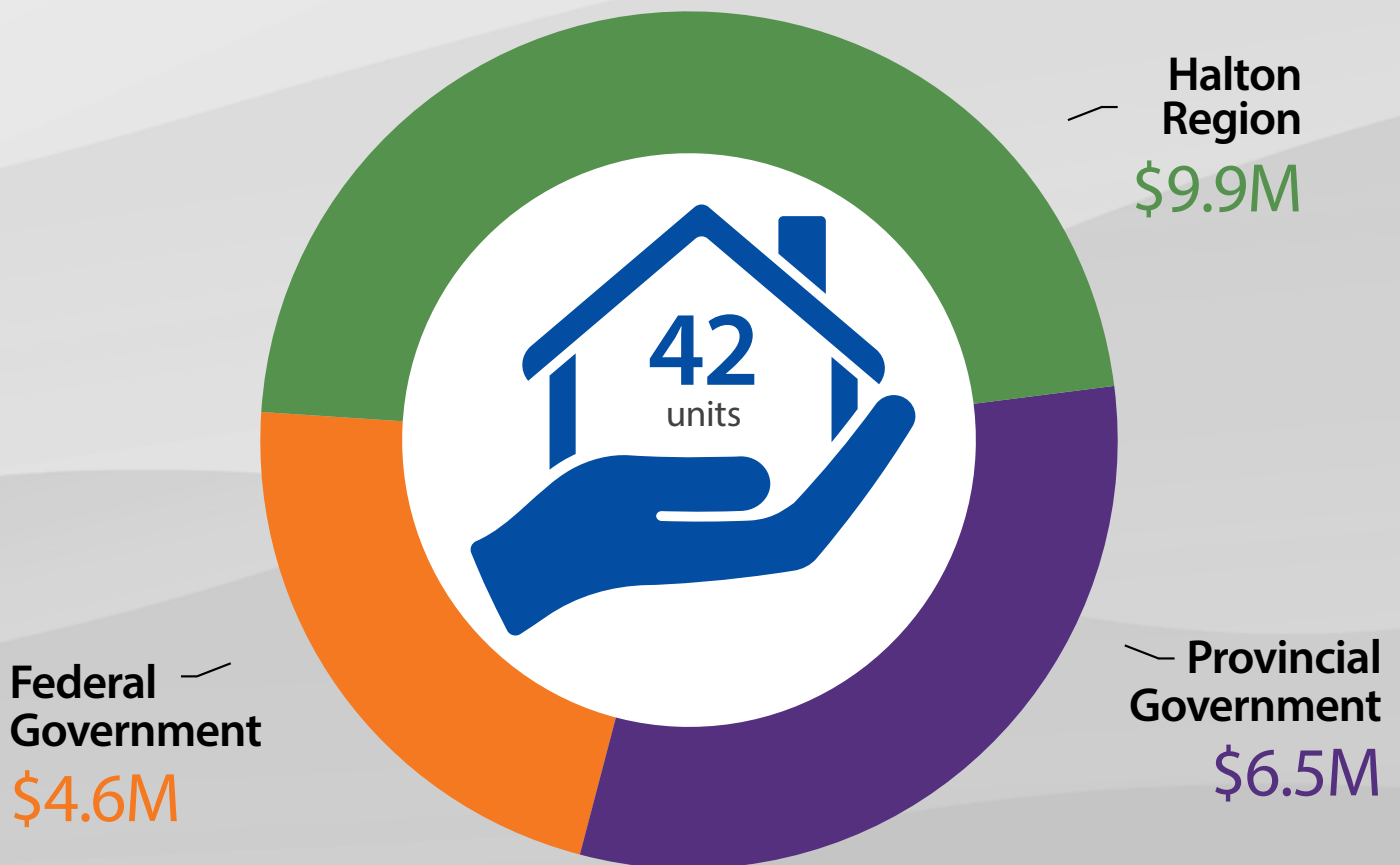
- Federal funding: \$644K
- Estimated cost: \$27.8M



Regional & 3rd Party Projects In Progress

Making progress to bring more assisted rental opportunities to the Halton community.

FUNDING SHARE

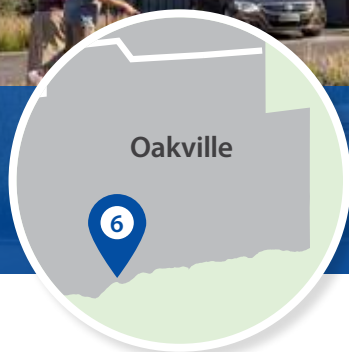


Total investment: \$21.0M (does not include 3rd party)

*Post Bill 23 development charges are no longer eligible to fund social housing.

REGIONAL DEVELOPMENT IN PROGRESS

Making progress on assisted rental housing development in the Halton community.



Rebecca Street

1258 Rebecca Street, Oakville

Building Summary

- 14 one bedroom units for seniors
- Supportive housing for homeless seniors with mobility challenges

Construction Status

- ✓ Anticipated completion: Fall 2025

Funding Status

- Regional funding: \$2.1M (excludes land)
- Provincial funding: \$6M
- Federal funding: \$2.6M

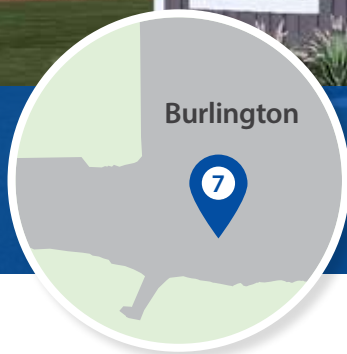


REGIONAL DEVELOPMENT IN PROGRESS

Making progress on assisted rental housing development in the Halton community.



Emergency Shelter



Burlington

Queensway Drive – Modular Units

2404 Queensway Drive, Burlington

Building Summary

- 2 two bedroom units
- Emergency Shelter

Construction Status

- ✓ Anticipated completion: Fall 2025

Funding Status

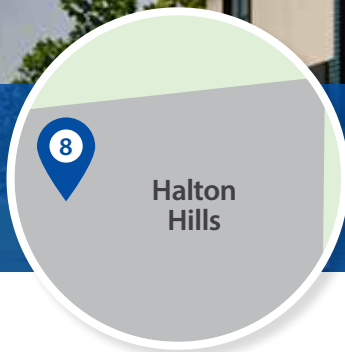
- Provincial funding: \$500K



3RD PARTY DEVELOPMENT IN PROGRESS

Making progress with our partners on assisted rental housing development in the Halton community.

Supportive Housing



Maria Street (Support House)

47 Maria Street, Halton Hills

Building Summary

- 12 one bedroom units for individuals with mental health and addiction challenges
- Supportive housing for individuals experiencing homelessness

Construction Status

- ✓ Anticipated completion: Spring 2026

Funding

- Regional funding: \$3.9M
- Federal funding: \$2M



3RD PARTY DEVELOPMENT IN PROGRESS

Making progress with our partners on assisted rental housing development in the Halton community.

For seniors

Halton
Hills



Guelph Street (Homestarts Non-Profit Housing Corporation)

17 Guelph Street, Halton Hills

Building Summary

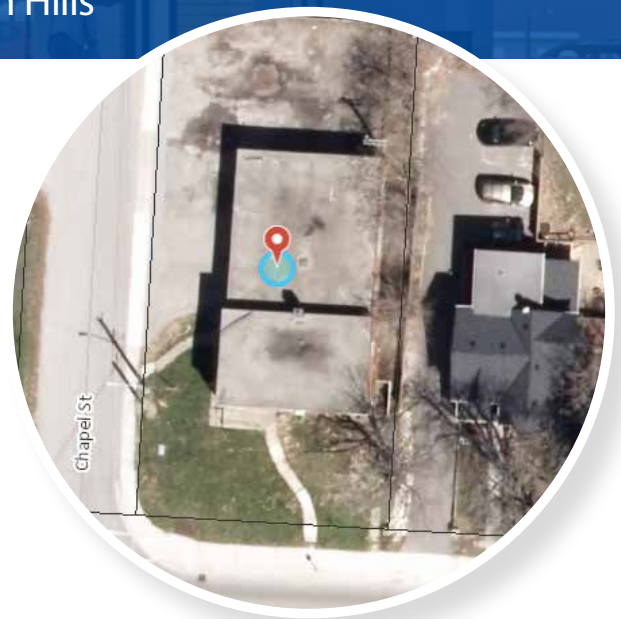
- 12 units
 - 7 units for seniors
 - 5 units dedicated for women-led households receiving services from Home Suite Hope
- 1, 2 & 3 bedrooms

Construction Status

- ✓ Construction starting: Summer 2025
- ✓ Anticipated completion: Spring 2027

Funding status

- Regional funding: \$3.8M



Completed Projects

In 2021, Halton Region adopted a multi-year assisted housing portfolio plan aligned with the Region's Comprehensive Housing Strategy to support the creation of new assisted housing opportunities and address community need. Since 2021, in collaboration with our partners, we have been successfully delivering new Regional and 3rd party developments and acquiring existing buildings to preserve government-assisted housing units.



125
Assisted

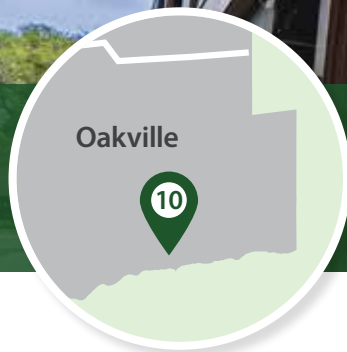
22
Supportive

177
Emergency
Supportive

REGIONAL DEVELOPMENT COMPLETED

Successfully delivering more assisted and supportive housing opportunities to the Halton community.

For seniors



Kerr Street

265 Kerr Street, Oakville
(Formerly 263 Kerr Street)

Building Summary

- 52 units for seniors
 - 30 one bedroom units
 - 22 Studios for homeless seniors with chronic health and mobility needs
- Ground floor Community Wellness Hub

Construction Status

- ✓ Completed: June 2025

Funding

- Regional funding: \$16.4M (excludes land)
- Provincial funding: \$14.9M
- Federal funding: \$9.3M

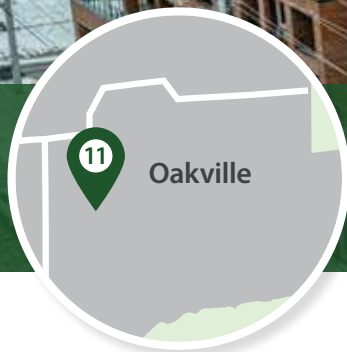


3RD PARTY DEVELOPMENT COMPLETED

Successfully delivering more assisted and supportive housing opportunities to the Halton community.



Assisted Housing



Old Bronte Road (One Urban Developments)

2475 Old Bronte Road, Oakville

Building Summary

- 131 total units
- 25 assisted units (Halton Region funded)
- 106 market units

Funding

- Regional funding (for 25 designated assisted rental units): \$6.3M

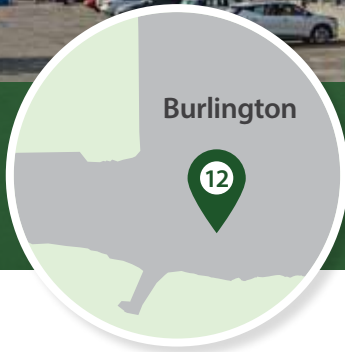


REGIONAL ACQUISITIONS COMPLETED

Preserving property and units to support more assisted rental opportunities in the Halton community.



Emergency Supportive Housing



Queensway Drive

2404 Queensway Drive, Burlington

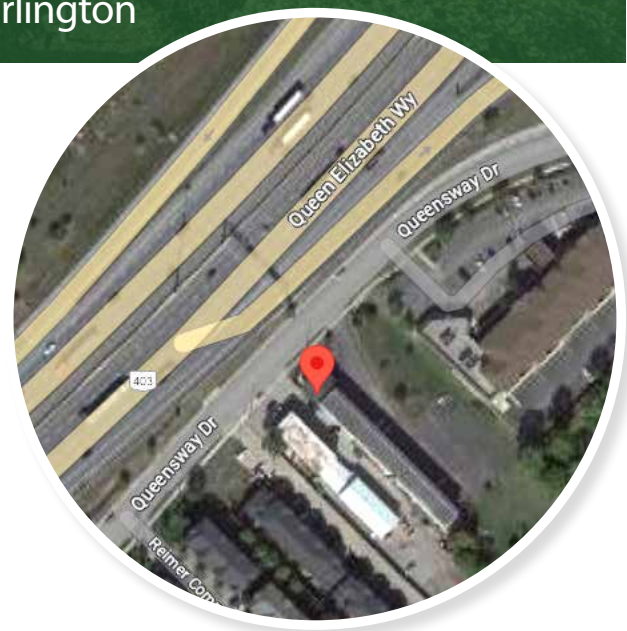
Building Summary:

- 49 units with on-site supports
- Owned by Halton Region and operated by Wesley Urban Ministries

Halton ownership assumed: March 26, 2021

Funding

- Provincial funding: \$5.2M
- Federal funding: \$7.4M

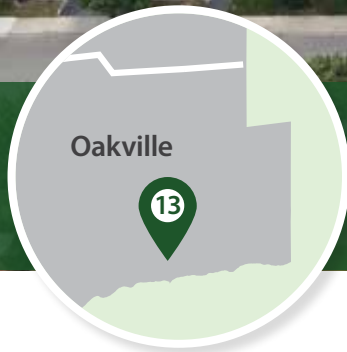


REGIONAL ACQUISITIONS COMPLETED

Preserving property and units to support more assisted rental opportunities in the Halton community.



Assisted Housing



Oakville

13

Normandy Place

30 Normandy Place, Oakville

Building Summary:

- 70 units
 - 36 one bedroom units
 - 19 two bedroom units
 - 15 three bedroom units

Halton ownership assumed: September 22, 2023

Funding

- Regional funding: \$19M

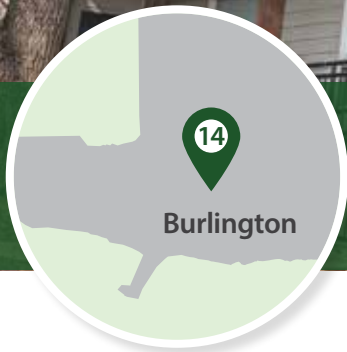


REGIONAL ACQUISITIONS COMPLETED

Preserving property and units to support more assisted rental opportunities in the Halton community.



Emergency Supportive Housing



Bethany Residence

2387 Industrial Street, Burlington

Building Summary:

- 128 beds/units
- 24/7 supportive housing
- Owned by Halton Region and operated by AbleLiving Services

Halton ownership assumed: June 24, 2024

Funding

- Regional funding: \$5.3M
- Federal funding: \$4M



QUICK REFERENCE

Type	Page #	Project	Number of Units
Shovel-Ready Development Opportunities			
Regional Shovel-Ready	2	Margaret Drive	13
	3	Maurice Drive	32
	4	Allendale Building 1	200
	5	Allendale Buildings 2&3	266
3 rd Party Shovel-Ready	6	Cornwall Road	37
In Progress Projects			
Regional Developments	8	Rebecca Street	14
	9	Queensway Drive - Modular Units	4
3 rd Party Developments	10	Maria Street	12
	11	Guelph Street	12
Completed Projects			
Regional Development Completed	13	Kerr Street	52
3 rd Party Development Completed	14	Old Bronte Road	25 (+106 market)
Regional Acquisitions Completed (since 2021*)	15	Queensway Drive	49
	16	Normandy Place	70
	17	Bethany Residence	128
TOTAL # OF UNITS			914

*In 2021, Halton Region adopted a multi-year assisted housing portfolio plan



Designs and project details are subject to change. Project renderings and images may be for conceptual or pre-development purposes only.