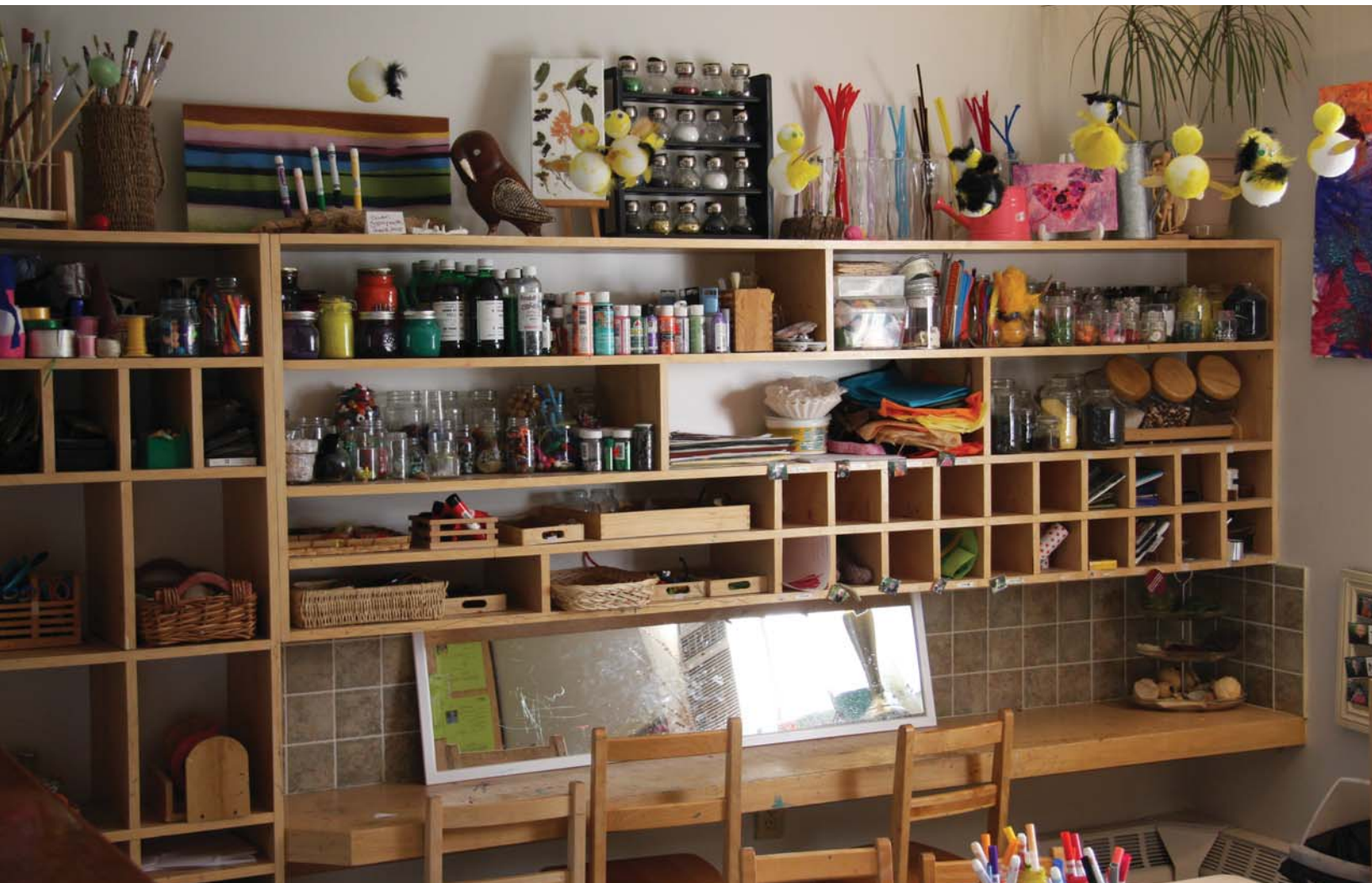




ACTON

Child Care Market Analysis

JANUARY 2020



Census data Demographics



This section of the report provides statistical information about the market area. The demographic profile of a population is vital to understanding who lives in the community and what their needs for services are. Characteristics such as age, language, education, work force participation and income can be predictors of service use.

Child care demand in Halton

While there are many factors driving the use of child care, there are three main factors that appear to be particularly influential in Halton – female participation in the labour force, newcomer status, and income level.

Analysis of female labour force participation rates (LFP) reveals substantial variation across Halton with East Milton showing the highest female LFP of 73 per cent and South West Oakville with the lowest rate of 57 per cent. From 2011 to 2016, the female LFP rose for North East Burlington and South East Oakville. However, decreases in rates were noticed across most of the rest of the Region. For Halton, a one per cent decrease in LFP translates to 1,472 fewer females in the labour force and unlikely to need child care.

Another key factor in Halton is newcomer status. Using child care differs greatly depending on the length of time a person has lived in Canada. According to 2018 Kindergarten Parent Survey results, families who have always lived in Canada are more likely to use child care (84 per cent of respondents) than those who have lived in Canada for 10 years or less (53 per cent).

Child care use differs by income level. Families who earn a higher income are more likely to use licensed child care. According to 2018 Kindergarten Parent Survey results, families that earn above \$150,000 annually are 40 per cent more likely to use child care than families with an annual income of less than \$50,000. Considering these and other variables (alone or together) can better describe child care demand in an area.

Characteristic	Acton		Halton Hills	
	#	%	#	%
Population, 2016	10,462	...	61,161	...
Population change, 2011 to 2016	31	0%	2,153	4%
Total number of children 13 months to 12 years of age	1,610	15%	9,065	15%
Infant (13 to 18 months)	50	3%	278	3%
Toddler (19 to 30 months)	105	7%	598	7%
Preschool (31 to 3.8 years)	141	9%	808	9%
Kindergarten (3.8 to 5.8 years)	234	15%	1,354	15%
School age (5.8 to 12 years)	1,080	67%	6,029	67%
Mother tongue not English	1,010	10%	8,825	14%
Recent immigrants (moved to Canada between 2011 and 2016)	70	1%	530	1%
Total population aged 25 to 64 years with no certificate, diploma or degree	630	6%	2,665	4%
Total population aged 25 to 64 years with a postsecondary certificate, diploma or degree	3,220	31%	21,190	35%
Labour Force Participation Rate (Males and females)	6,180	73%	35,730	73%
Labour Force Participation Rate (Females)	2,980	69%	17,340	70%
Income	#	%	#	%
Total households in after-tax income groups	3,820	...	21,075	...
\$0 to \$29,999	395	10%	1,840	9%
\$30,000 to \$59,999	965	25%	4,165	20%
\$60,000 to \$99,999	1,220	32%	5,920	28%
\$100,000 to \$124,999	580	15%	3,095	15%
\$125,000 and over	665	17%	6,035	29%
Households with low income based on after-tax low-income measure (LIM-AT)	665	17%	3,150	15%

Low Income Measure After-Tax (LIM-AT): A fixed per cent (50%) of median adjusted after-tax family income, where "adjusted" indicates that family needs are taken into account. For the 2016 Census, the reference period is the calendar year 2015 for all income variables.

Statistics Canada randomly rounds each individual value either up or down to a multiple of '5' or '10.' As a result, when these data are summed or grouped, the total value may not match the individual values since totals and sub-totals are independently rounded. Similarly, percentages, which are calculated on rounded data, may not necessarily add up to 100 percent.

SOURCE: Statistics Canada, Census 2016

Child care market analysis

The tables below give information about licensed full-day centre-based child care and before and after school programs operating in the vicinity. It does not include data from nursery school programs or licensed home child care providers. Average market rates by type and municipality are included to provide comparative data for prices across Halton. A market rate is the full cost of child care for one day charged by child care providers.

Description	Acton		Halton Hills		Halton	
	#	%	#	%	#	%
Total number of licensed full-day child care programs and before and after-school programs	4	...	31	...	277	...
Total licensed capacity	339	...	2,628	...	28,191	...
Infant spaces	10	3%	59	2%	789	3%
Toddler spaces	29	9%	214	8%	2,782	10%
Preschool spaces	48	14%	423	16%	5,869	21%
Kindergarten spaces	92	27%	680	26%	7,335	26%
School age spaces	160	47%	1,252	48%	11,416	40%
Programs with a licensed capacity of 75 spaces or more	3	75%	15	48%	168	61%
Programs with a Child Care Service Management Agreement ¹	4	100%	31	100%	259	94%
Programs in Quality First, ² Level 1 Foundational	0	0%	3	10%	53	23%
Programs in Quality First, Level 2 Developmental	0	0%	1	3%	23	10%
Programs in Quality First, Level 3 Progressive	4	100%	25	86%	159	68%

¹ A Child Care Service Management Agreement (CCSMA) is the agreement between a licensed child care operator (or licensed home child care agency) and Halton Region which allows access to funding that supports high quality, inclusive, and affordable child care in Halton.

² Quality First is an early learning initiative focused on quality improvement. Consultants provide training and support to participating licensed child care programs in Halton. The program uses two models, the Centre Model and School Age Model, which are divided into three levels of achievement.

Average Market Rate ¹	Burlington	Milton	Oakville	Halton Hills	Halton
Infant full-day	\$73.44	\$72.70	\$72.75	\$67.76	\$72.56
Toddler full-day	\$59.89	\$58.52	\$60.41	\$53.71	\$59.38
Preschool full-day	\$53.60	\$53.07	\$57.28	\$48.50	\$54.76
School age before and after-school (JK-12 years)	\$25.49	\$24.28	\$25.60	\$23.32	\$24.97

¹ A market rate is available only for licensed child care programs with a Child Care Service Management Agreement. Information from nursery school programs and licensed home child care agencies are not included in the calculation of the average market rates. The market average equals the sum of all current available values in each category divided by the total number of programs in the category.

Child care need: The current outlook for Acton

Understanding the patterns of demand and supply allows for focused efforts to shape supply to match child care demand. Comparing demand with the current supply of licensed spaces allows us to estimate met/unmet need. Need is calculated by taking the number of children aged 0-12 and subtracting female labour force participation and child care utilization rates. Whether an area is operating in excess or shortage of licensed child care space is shown below.

Market area	Infant		Toddler		Preschool		School age	
	Met/unmet need	Number of licensed child care spaces	Met/unmet need	Number of licensed child care spaces	Met/unmet need	Number of licensed child care spaces	Met/unmet need	Number of licensed child care spaces
Acton	Excess	+ 0 to 25 spaces	Shortage	- 0 to 25 spaces	Shortage	- 0 to 25 spaces	Shortage	- 0 to 25 spaces
Halton Hills	Excess	+ 0 to 25 spaces	Excess	+ 26 to 50 spaces	Excess	+ 101 to 150 spaces	Excess	+ Over 200 spaces
Halton	Excess	+ Over 200 spaces	Excess	+ Over 200 spaces	Excess	+ Over 200 spaces	Excess	+ Over 200 spaces

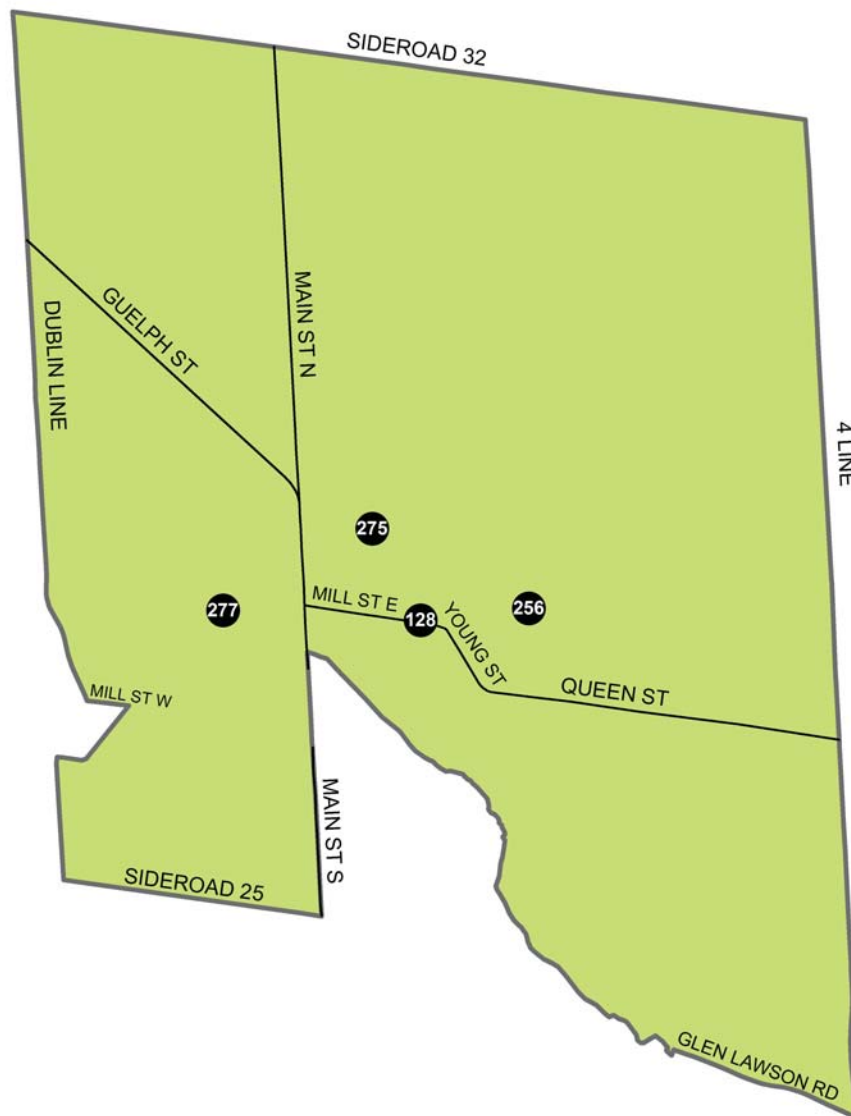
Supply of child care services



Acton

This map shows the location of licensed full-day child care centres within the market area, excluding nursery school programs and licensed home child care providers, and full-day child care programs or before and after school programs licensed after September 30, 2019.

Information about licensed capacity and market rate specific to each program are included with the legend on the following page.



Legend	Site Name	CCSMA ¹	Licensed Capacity ²						(\$) Market Rate ³			
			TOTAL Capacity	INF	TOD	PRE	JK/SK	SA	INF	TOD	PRE	SA/BAS
128	Acton's Early Learning Child Care	Yes	107	10	29	48	20	0	\$67.60	\$55.60	\$51.60	*
256	YMCA Toronto - Acton	Yes	76	0	0	0	26	50	*	*	*	\$22.00
275	YMCA Toronto - Robert Little	Yes	91	0	0	0	26	65	*	*	*	\$22.00
277	YMCA Toronto - St. Joseph	Yes	50	0	0	0	20	30	*	*	*	\$22.00

* Rate not applicable

¹ A Child Care Service Management Agreement (CCSMA) is the agreement between a licensed child care operator (or licensed home child care agency) and Halton Region which allows access to funding that supports high quality, inclusive, and affordable child care in Halton.

² Licensed capacity for infant (INF), toddler (TOD), preschool (PRE), junior and senior kindergarten (JK/SK), and school age (SA/BAS) spaces from the Ontario Child Care Management System (OCCMS) on September 30, 2019.

³ The market rate is the full cost of child care for one day charged by a child care provider. A market rate is provided only for licensed child care programs with a Child Care Service Management Agreement who offer core child care services such as full-day programming for infants, toddlers and preschoolers, or before and after school programs for school age children. The market rate is effective September 30, 2019.

Community assets

Halton Hills

Licensed home child care agencies

Agency name	Head office address	Locale	Postal code	Service area
A Child's Place Home Day Care Agency	10588 Eighth Line RR#2	Georgetown	L7G 4S5	Georgetown, Acton
Cherish Private Home Child Care	410 Bronte Street South	Milton	L9T 0H8	Milton, Georgetown, Acton

EarlyON Child and Family centres (Main and satellite locations)

EarlyON Child and Family Centres provide a broad set of free programs and resources for children aged 0 to 6 and their families and caregivers. EarlyON Child and Family Centres are funded by Halton Region. Links2Care operates the EarlyON programs in the Halton Hills area.

Site name	Address	Municipality	Postal code
Georgetown EarlyON Child and Family Centre	8 James Street	Georgetown	L7G 2H3
Acton EarlyON Child and Family Centre	85 Wallace Street	Acton	L7J 2G1
Bethel Church - satellite location	365 Queen Street	Acton	L7J 2M6

Community and recreation centres

Building name	Address	Municipality	Postal code
Acton Arena and Community Centre	415 Queen Street East	Acton	L7G 2H7
Gellert Community Centre	10241 Eighth Line	Georgetown	L7G 4S5
Halton Hills Cultural Centre	9 Church Street	Georgetown	L7G 2A3
Mold-Masters SportsPlex	221 Guelph Street	Georgetown	L7G 4A8

Acton

Nursery schools

Site name	Address	Postal code	Licensed capacity
There are no nursery schools located in this area			

Social housing: Family and all-ages communities

Building	Address	Locale	Municipality	Postal code	# of units
Braeside	46 Holmesway Place	Acton	Halton Hills	L7J 1Z3	12
Cobblehill Homes Co-op	53 Cook Street	Acton	Halton Hills	L7J 1Z5	36
Holmesway Place	10-44 Holmesway Place	Acton	Halton Hills	L7J1 Z3	38

Places of worship

Name	Address	Locale	Municipality	Postal code	Child care program available on-site		
					Full-day Program	Nursery School	Child Care Program Name
Bethel Christian Reformed Church	365 Queen Street	Acton	Halton Hills	L7J 2M6	No	No	
Churchill Community Church	14406 Churchill Road	Acton	Halton Hills	L7J 2L8	No	No	
Evangel Family Church	33 Churchill Road North	Acton	Halton Hills	L7J 2H8	No	No	
Knox Presbyterian Church	44 Main Street North	Acton	Halton Hills	L7J 2M4	No	No	
St. Joseph Patron of Canada Roman Catholic Church	47 John Street South	Acton	Halton Hills	L7J 2A8	No	No	
Trinity United Church	70 Mill Street East	Acton	Halton Hills	L7J 1H3	No	No	

Schools

Elementary schools	Address	Locale	Municipality	Postal code	School board
Mckenzie-Smith Bennett	69 Acton Boulevard	Acton	Halton Hills	L7J 2H4	Halton District
Robert Little	41 School Lane	Acton	Halton Hills	L7J 1B9	Halton District
St. Joseph	147 Mill Street West	Acton	Halton Hills	L7J 1G7	Halton Catholic
Secondary schools	Address	Locale	Municipality	Postal code	School board
Acton District	21 Cedar Road	Acton	Halton Hills	L7J 2V2	Halton District

Source: Board School Identification Database (BSID) / Ontario School Information System (OnSIS) as updated/maintained by boards, September 2019.