



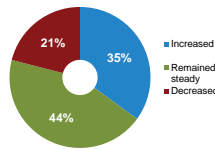
# BUSINESS CONDITIONS

## BUSINESS

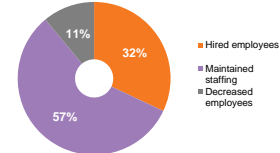
### Past Year Business Profits<sup>1</sup>

	Percentage Distributions				
	2014	2015	2016	2017	2018
Increased	38%	35%	42%	41%	35%
Remained steady	44%	43%	39%	37%	44%
Decreased	18%	22%	19%	22%	21%
Total	100%	100%	100%	100%	100%

Past Year Business Profits 2018<sup>1</sup>



Past Year Business Staffing 2018<sup>1</sup>



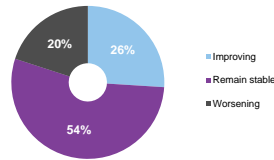
### Past Year Business Staffing<sup>1</sup>

	Percentage Distributions				
	2014	2015	2016	2017	2018
Hired employees	37%	29%	34%	41%	32%
Maintained staffing	51%	57%	54%	47%	57%
Decreased employees	12%	14%	12%	12%	11%
Total	100%	100%	100%	100%	100%

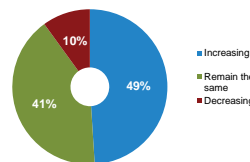
### Halton Business Forecasts and Expectations<sup>1</sup>

	Percentage
<b>Halton's Economic Conditions next 12 months</b>	
Improving	26%
Remain stable	54%
Worsening	20%
<b>Business Profit Forecast next 12 months</b>	
Increasing	49%
Remain the same	41%
Decreasing	10%
<b>Staffing Expectations next 12 months</b>	
Hiring employees	41%
Maintaining staffing	54%
Decreasing employees	5%

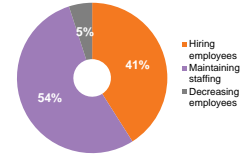
Economic Conditions in Halton Forecast next 12 months<sup>1</sup>



Business Profit Forecast next 12 months<sup>1</sup>



Business Staffing Expectation next 12 months<sup>1</sup>



### Planned Productivity Investments for next 12 months<sup>1</sup>

	Percentage
<b>Planning to invest in productivity</b>	
Yes	60%
No	40%
<b>Types of productivity investment planned</b>	
Skills training	40%
Research and development	14%
Machinery and equipment	24%
Information and communication technology	31%

### Planned Capital Improvement Investments for next 12 months<sup>1</sup>

	Percentage
<b>Planning to invest in capital improvements</b>	
Yes	62%
No	38%
<b>Types of capital improvements</b>	
Vehicles	21%
Computer, communications and office technology expenditures	42%
Process machinery and equipment	20%
Land, buildings and renovations	23%

Sources

<sup>1</sup> Halton Region, Business Conditions Survey

For more detailed statistics or to request customized reports, please contact us.



Disclaimer: Halton Region

does not warrant the

Last modified: March 21, 2019