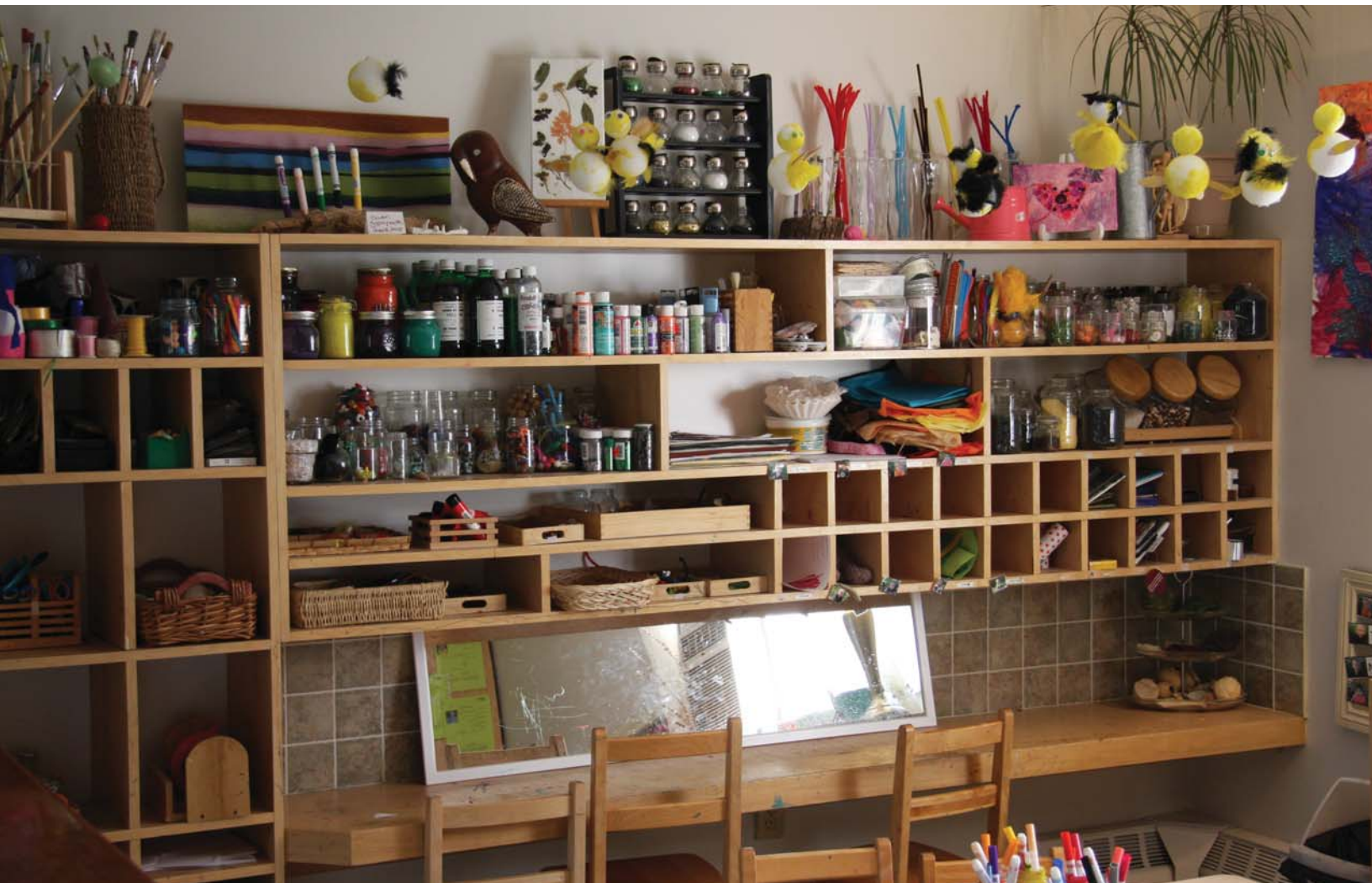




SOUTH MILTON

Child Care Market Analysis

JANUARY 2020



Census data Demographics



This section of the report provides statistical information about the market area. The demographic profile of a population is vital to understanding who lives in the community and what their needs for services are. Characteristics such as age, language, education, work force participation and income can be predictors of service use.

Child care demand in Halton

While there are many factors driving the use of child care, there are three main factors that appear to be particularly influential in Halton – female participation in the labour force, newcomer status, and income level.

Analysis of female labour force participation rates (LFP) reveals substantial variation across Halton with East Milton showing the highest female LFP of 73 per cent and South West Oakville with the lowest rate of 57 per cent. From 2011 to 2016, the female LFP rose for North East Burlington and South East Oakville. However, decreases in rates were noticed across most of the rest of the Region. For Halton, a one per cent decrease in LFP translates to 1,472 fewer females in the labour force and unlikely to need child care.

Another key factor in Halton is newcomer status. Using child care differs greatly depending on the length of time a person has lived in Canada. According to 2018 Kindergarten Parent Survey results, families who have always lived in Canada are more likely to use child care (84 per cent of respondents) than those who have lived in Canada for 10 years or less (53 per cent).

Child care use differs by income level. Families who earn a higher income are more likely to use licensed child care. According to 2018 Kindergarten Parent Survey results, families that earn above \$150,000 annually are 40 per cent more likely to use child care than families with an annual income of less than \$50,000. Considering these and other variables (alone or together) can better describe child care demand in an area.

Characteristic	South Milton		Milton	
	#	%	#	%
Population, 2016	43,661	...	110,128	...
Population change, 2011 to 2016	18,710	75%	25,766	31%
Total number of children 13 months to 12 years of age	10,950	25%	23,600	21%
Infant (13 to 18 months)	440	4%	853	4%
Toddler (19 to 30 months)	938	9%	1,820	8%
Preschool (31 to 3.8 years)	1,240	11%	2,400	10%
Kindergarten (3.8 to 5.8 years)	1,968	18%	4,014	17%
School age (5.8 to 12 years)	6,365	58%	14,514	61%
Mother tongue not English	18,010	41%	36,445	33%
Recent immigrants (moved to Canada between 2011 and 2016)	2,965	7%	5,645	5%
Total population aged 25 to 64 years with no certificate, diploma or degree	1,080	2%	3,250	3%
Total population aged 25 to 64 years with a postsecondary certificate, diploma or degree	18,695	43%	44,075	40%
Labour Force Participation Rate (Males and females)	22,790	79%	59,805	74%
Labour Force Participation Rate (Females)	10,390	67%	28,470	69%
Income	#	%	#	%
Total households in after-tax income groups	12,530	...	34,260	...
\$0 to \$29,999	735	6%	2,510	7%
\$30,000 to \$59,999	2,120	17%	6,450	19%
\$60,000 to \$99,999	4,390	35%	11,280	33%
\$100,000 to \$124,999	2,285	18%	5,705	17%
\$125,000 and over	3,010	24%	8,270	24%
Households with low income based on after-tax low-income measure (LIM-AT)	4,305	34%	9,435	28%

Low Income Measure After-Tax (LIM-AT): A fixed per cent (50%) of median adjusted after-tax family income, where "adjusted" indicates that family needs are taken into account. For the 2016 Census, the reference period is the calendar year 2015 for all income variables.

Statistics Canada randomly rounds each individual value either up or down to a multiple of '5' or '10.' As a result, when these data are summed or grouped, the total value may not match the individual values since totals and sub-totals are independently rounded. Similarly, percentages, which are calculated on rounded data, may not necessarily add up to 100 percent.

SOURCE: Statistics Canada, Census 2016

Child care market analysis

The tables below give information about licensed full-day centre-based child care and before and after school programs operating in the vicinity. It does not include data from nursery school programs or licensed home child care providers. Average market rates by type and municipality are included to provide comparative data for prices across Halton. A market rate is the full cost of child care for one day charged by child care providers.

Description	South Milton		Milton		Halton	
	#	%	#	%	#	%
Total number of licensed full-day child care programs and before and after-school programs	12	...	51	...	277	...
Total licensed capacity	2,280	...	7,033	...	28,191	...
Infant spaces	20	1%	159	2%	789	3%
Toddler spaces	60	3%	573	8%	2,782	10%
Preschool spaces	96	4%	1,297	18%	5,869	21%
Kindergarten spaces	852	37%	1,966	28%	7,335	26%
School-age spaces	1,252	55%	3,038	43%	11,416	40%
Programs with a licensed capacity of 75 spaces or more	12	100%	43	84%	168	61%
Programs with a Child Care Service Management Agreement ¹	12	100%	41	80%	259	94%
Programs in Quality First, ² Level 1 Foundational	1	10%	8	20%	53	23%
Programs in Quality First, Level 2 Developmental	0	0%	6	15%	23	10%
Programs in Quality First, Level 3 Progressive	9	90%	27	66%	159	68%

¹ A Child Care Service Management Agreement (CCSMA) is the agreement between a licensed child care operator (or licensed home child care agency) and Halton Region which allows access to funding that supports high quality, inclusive, and affordable child care in Halton.

² Quality First is an early learning initiative focused on quality improvement. Consultants provide training and support to participating licensed child care programs in Halton. The program uses two models, the Centre Model and School Age Model, which are divided into three levels of achievement.

Average Market Rate ¹	Burlington	Milton	Oakville	Halton Hills	Halton
Infant full-day	\$73.44	\$72.70	\$72.75	\$67.76	\$72.56
Toddler full-day	\$59.89	\$58.52	\$60.41	\$53.71	\$59.38
Preschool full-day	\$53.60	\$53.07	\$57.28	\$48.50	\$54.76
School age before and after-school (JK-12 years)	\$25.49	\$24.28	\$25.60	\$23.32	\$24.97

¹ A market rate is available only for licensed child care programs with a Child Care Service Management Agreement. Information from nursery school programs and licensed home child care agencies are not included in the calculation of the average market rates. The market average equals the sum of all current available values in each category divided by the total number of programs in the category.

Child care need: The current outlook for South Milton

Understanding the patterns of demand and supply allows for focused efforts to shape supply to match child care demand. Comparing demand with the current supply of licensed spaces allows us to estimate met/unmet need. Need is calculated by taking the number of children aged 0-12 and subtracting female labour force participation and child care utilization rates. Whether an area is operating in excess or shortage of licensed child care space is shown below.

Market area	Infant		Toddler		Preschool		School-age	
	Met/unmet need	Number of licensed child care spaces	Met/unmet need	Number of licensed child care spaces	Met/unmet need	Number of licensed child care spaces	Met/unmet need	Number of licensed child care spaces
S Milton	Shortage	- 51 to 75 spaces	Shortage	- Over 200 spaces	Shortage	- Over 200 spaces	Shortage	- 51 to 75 spaces
Milton	Shortage	- 51 to 75 spaces	Shortage	- 151 to 200 spaces	Shortage	- 51 to 75 spaces	Excess	+ 151 to 200 spaces
Halton	Excess	+ Over 200 spaces	Excess	+ Over 200 spaces	Excess	+ Over 200 spaces	Excess	+ Over 200 spaces

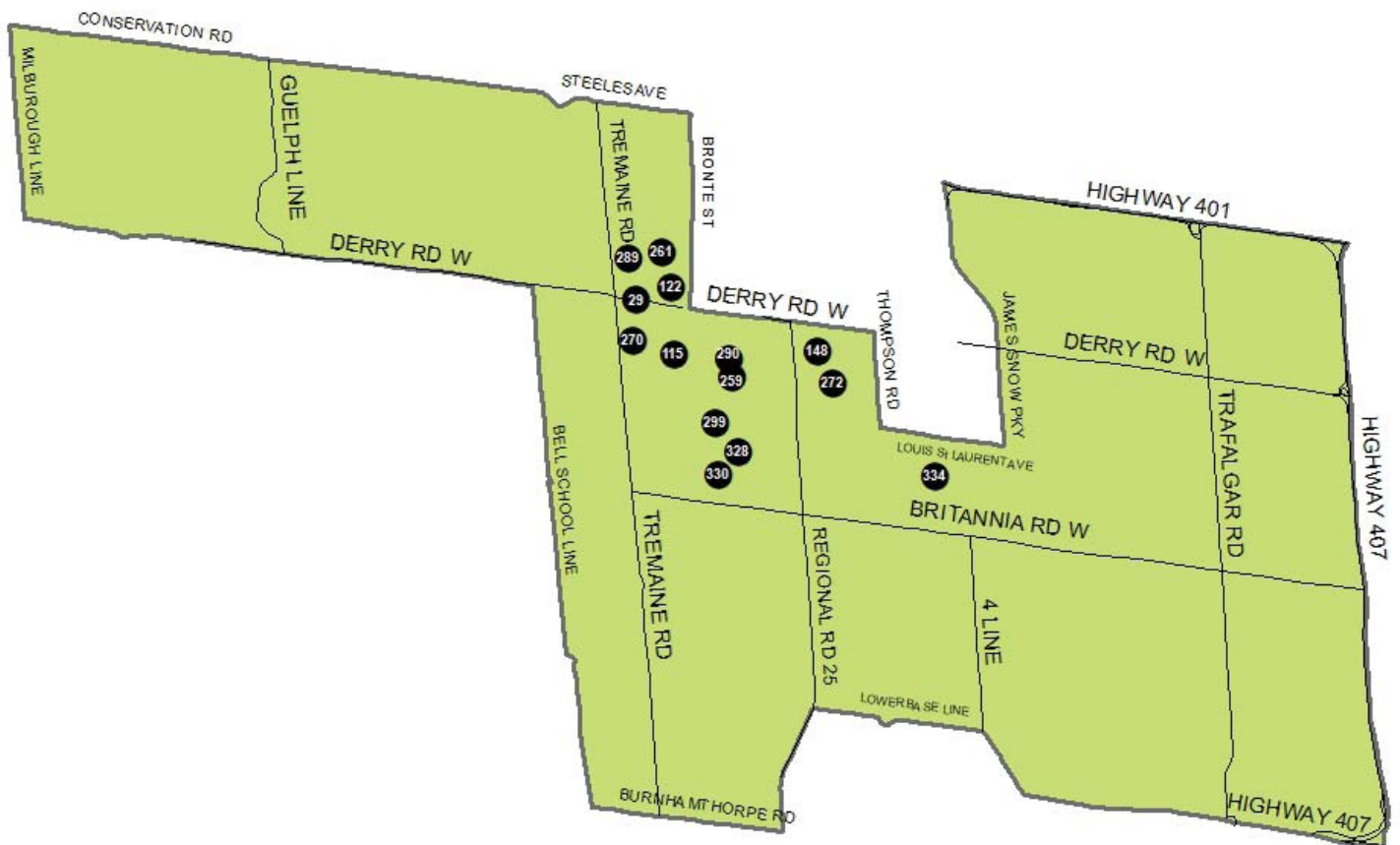
Supply of child care services



South Milton

This map shows the location of licensed full-day child care centres within the market area, excluding nursery school programs and licensed home child care providers, and full-day child care programs or before and after school programs licensed after September 30, 2019.

Information about licensed capacity and market rate specific to each program are included with the legend on the following page.



Legend	Site name	CCSMA ¹	Licensed capacity ²						(\$) Market rate ³			
			Total capacity	INF	TOD	PRE	JK/SK	SA	INF	TOD	PRE	SA/BAS
29	Cudley Corner Child Care Centre	Yes	103	10	30	48	0	15	\$63.00	\$49.25	\$47.25	\$27.00
299	MCRC Boyne Before and After School Program	Yes	101	0	0	0	52	49	*	*	*	\$26.00
115	MCRC P.L. Robertson Before and After School Program	Yes	168	0	0	0	78	90	*	*	*	\$26.00
328	MCRC St. Scholastica Before and After School Program	Yes	142	0	0	0	52	90	*	*	*	\$26.00
148	MCRC T.J. Singh Before and After School Program	Yes	187	0	0	0	52	135	*	*	*	\$26.00
330	MCRC Viola Desmond Early Learning Centre	Yes	316	10	30	48	78	150	\$72.00	\$53.00	\$49.00	\$26.00
259	YMCA Toronto - SACC - Anne J. MacArthur	Yes	193	0	0	0	78	115	*	*	*	\$23.00
261	YMCA Toronto - SACC - Escarpment View	Yes	152	0	0	0	72	80	*	*	*	\$23.00
270	YMCA Toronto - SACC - Lumen Christi	Yes	234	0	0	0	104	130	*	*	*	\$23.00
272	YMCA Toronto - SACC - Our Lady of Fatima	Yes	234	0	0	0	104	130	*	*	*	\$23.00
289	YMCA Toronto - SACC - Queen of Heaven	Yes	227	0	0	0	104	123	*	*	*	\$23.00
290	YMCA Toronto - SACC - St. Benedict	Yes	223	0	0	0	78	145	*	*	*	\$23.00

* Rate not applicable

¹ A Child Care Service Management Agreement (CCSMA) is the agreement between a licensed child care operator (or licensed home child care agency) and Halton Region which allows access to funding that supports high quality, inclusive, and affordable child care in Halton.

² Licensed capacity for infant (INF), toddler (TOD), preschool (PRE), junior and senior kindergarten (JK/SK), and school age (SA/BAS) spaces from the Ontario Child Care Management System (OCCMS) on September 30, 2019.

³ The market rate is the full cost of child care for one day charged by a child care provider. A market rate is provided only for licensed child care programs with a Child Care Service Management Agreement who offer core child care services such as full-day programming for infants, toddlers and preschoolers, or before and after school programs for school age children. The market rate is effective September 30, 2019.

Community assets

Milton

Licensed home child care agencies

Agency name	Head office address	Locale	Postal code	Service area
Cherish Private Home Child Care	410 Bronte Street South	Milton	L9T 0H8	Milton, Georgetown, Acton
Halton Day Care Services	298 Bussel Crescent	Milton	L9T 0W4	Milton, Oakville
Little Leaders Home Daycare Agency	1513 Pembroke Drive	Oakville	L6H 1V6	Milton, Oakville, Burlington
Our Little Angels Academy	1226 Book Drive	Milton	L9T 6C4	Milton
Wee Watch - Milton (Paradise Home Day Care Services Inc.)	1551 Dorian Crescent	Milton	L9E 1H6	Milton

EarlyON Child and Family Centres (Main and satellite locations)

EarlyON Child and Family Centres provide a broad set of free programs and resources for children aged 0 to 6, and their families and caregivers. EarlyON Child and Family Centres are funded by Halton Region. Milton Community Resource Centre (MCRC) operates the EarlyON programs in the Milton area.

Site name	Address	Municipality	Postal code
Milton Community Resource Centre	410 Bronte Street South	Milton	L9T 0H8
Southside Community Church - satellite location (school year)	200 Main Street East	Milton	L9T 1N8
Viola Desmond Public School - satellite location	1450 Leger Way	Milton	L9T 7K9

Community and recreation centres

Building name	Address	Municipality	Postal code
Boyne Community Centre	2287 Britannia Road West	Milton	L9T 4B7
John Tonelli Sports Centre	217 Laurier Avenue	Milton	L9T 3R5
Milton Leisure Centre	1100 Main Street East	Milton	L9T 6H7
Milton Thompson Memorial Arena	77 Thompson Road South	Milton	L9T 2R5
Milton Sports Centre	605 Santa Maria Boulevard	Milton	L9T 6J5
Nassagaweya Tennis Centre and Community Hall	150 Mary Street	Milton	L9T 6Z5

South Milton

Nursery schools

Site name	Address	Postal code	Licensed capacity
There are no nursery schools located in this area			

Social housing: Family and all-ages communities

Building	Address	Locale	Municipality	Postal code	Number of units
There are no social housing properties located in this area					

Places of worship

Name	Address	Municipality	Postal code	Child care program available on-site		
				Full-day program	Nursery school	Child care program name
Bethel United Church	6150 Trafalgar Road	Milton	L0P1E0	No	No	
New Life Pentecostal Church	824 Thompson Road South	Milton	L9T2X5	Yes	No	Little Hands Children's Learning Centre
Omagh Church of Christ	9850 Britannia Road	Milton	L9T7E8	No	No	
Omagh Presbyterian Church	8815 Britannia Road West	Milton	L9T2X5	No	No	
St. Georges Anglican Church	7051 Guelph Line, RR3	Milton	L0P1B0	No	No	

Schools

Elementary schools	Address	Municipality	Postal code	School board
Anne J. MacArthur	820 Farmstead Drive	Milton	L9T 7P5	Halton District
Boyne	1110 Farmstead Drive	Milton	L9E 0B5	Halton District
Escarpment View	351 Scott Boulevard	Milton	L9T 0T1	Halton District
Lumen Christi	841 Savoline Boulevard	Milton	L9T 0Z1	Halton Catholic
Our Lady of Fatima	709 Bolingbroke Drive	Milton	L9T 6Z3	Halton Catholic
P.L. Robertson	840 Scott Boulevard	Milton	L9T 2C9	Halton District
Queen of Heaven	331 Savoline Boulevard	Milton	L9T 7M4	Halton Catholic
St. Benedict	80 McLaughlin Avenue	Milton	L9T 8N2	Halton Catholic
St. Scholastica	170 Whitlock Avenue	Milton	L9E 1K6	Halton Catholic
Tiger Jeet Singh	650 Yates Drive	Milton	L9T 7P6	Halton District
Viola Desmond	1450 Leger Way	Milton	L9T 7K6	Halton District
Secondary schools	Address	Municipality	Postal code	School board
Craig Kielburger	1151 Ferguson Drive	Milton	L9T 7V8	Halton District
Jean Vanier	1145 Bronte Street South	Milton	L9T 7K6	Halton Catholic

Source: Board School Identification Database (BSID) / Ontario School Information System (OnSIS) as updated/maintained by boards, September 2019.