

APPENDIX J.3

PUBLIC INFORMATION CENTRES (PIC)



NOTICE OF PUBLIC INFORMATION CENTRE #1

CLASS ENVIRONMENTAL ASSESSMENT STUDY Ninth Line (Regional Road 13) Transportation Corridor Improvements Highway 407 to 10 Side Road (Regional Road 10), Town of Halton Hills PR-2876A

Study

Halton Region has initiated a Class Environmental Assessment (Class EA) study to consider a wide range of options for transportation corridor improvements to satisfy future travel demands to 2031 on Ninth Line from Highway 407 to 10 Side Road, in the Town of Halton Hills. In order to best address travel demand along Ninth Line, the Class EA Study will consider a wide range of road improvement alternatives as well as intersection improvements, active transportation and overall traffic operations. The impact of road improvements on social, cultural, economic and natural environments will also be evaluated and assessed during the study.

Process

The study is being conducted in compliance with Schedule C of the Municipal Class Environmental Assessment (October 2000, amended 2007 and 2011), which is approved under the *Ontario Environmental Assessment Act*.

A key component of the study will be consultation with interested stakeholders (public and regulatory agencies) at two Public Information Centres (PIC). The first Public Information Centre has been arranged for:

Date: Thursday, November 20, 2014
Time: Drop-in: 6:30 – 8:30 p.m.
Location: Georgetown District High School - Cafeteria
 70 Guelph Street, Halton Hills, ON L7G 3Z5

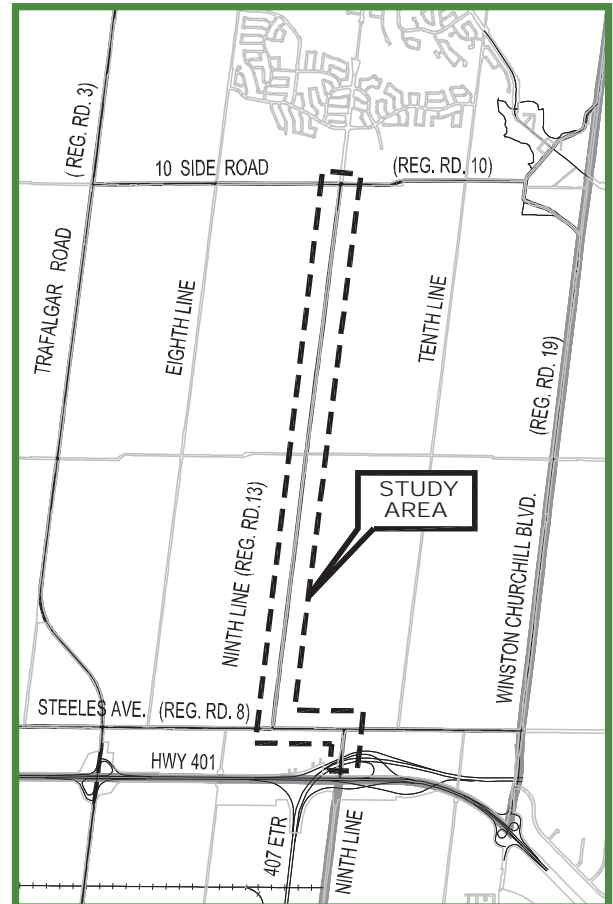
The purpose of the PIC is to review and obtain public input on the problems being addressed, background information and the planning alternatives being considered. Anyone with an interest in this study is invited to attend and participate.

Comments

If you are unable to attend the Public Information Centre and would like to provide comments, please forward them by Friday, December 5, 2014 to either Project Team member. For more information on this project, please visit the project website at Halton.ca/EAProjects.

Ms. Alicia Jakaitis
 Transportation Coordinator
 Halton Region
 1151 Bronte Road
 Oakville, Ontario L6M 3L1
 Telephone: 905-825-6000 ext. 7556
 Fax: 905-825-3270
 Email: alicia.jakaitis@halton.ca

Alvaro L. Almuina, P. Eng., M.Eng., PMP, DCE
 Project Manager
 Urban & Environmental Management Inc.
 5100 Orbitor Drive, Suite 300
 Mississauga, Ontario L4W 4Z4
 Telephone: 905-212-9722 x45
 Fax: 905-212-9397
 Email: aalmuina@uemconsulting.com



The map shows the approximate limits of the study area.



Two Region Public Information Centres in Georgetown

Thursday evening | Your online newspaper for Georgetown and Acton, Ontario

theifp.ca/news/two-region-public-information-centres-in-georgetown-thursday-evening/

File Photo

Halton Region is hosting two Public Information Centres (PICs) Thursday evening in Georgetown.

Both of the PICs will focus on Class Environmental Assessment (EA) Studies for transportation corridor improvements required through 2031 on roads in Halton Hills. Trafalgar Rd. between Steeles Ave. and Hwy. 7 is the subject of one, and Ninth Line between Hwy 407 and 10 Sideroad will be the focus of the other.

Both PICs will be held from 6:30 to 8:30 p.m. (drop-in) in the cafeteria at Georgetown District High School. The purpose of the PICs is to obtain public input on the problems being addressed, background information and planning alternatives being considered

Improvements being considered are widening of both Trafalgar Rd. (from Steeles to Hwy 7) and Ninth Line (from 407 to 10 Sideroad) to four lanes, intersection and traffic operation improvements, landscaping and street lighting and on and off-road facilities for pedestrians and cyclists.

The Class EA study for the Ninth Line is expected to be completed next fall, with the start of construction slated for 2017. The cost for those improvements is estimated at about \$39 million.

The Trafalgar Rd. EA study is anticipated to be done in the spring of 2016. There are four components which include two proposed grade separations at the rail crossings on that stretch of road and two roadway segments. Start of construction for the grade separations is scheduled for 2018, 2019 for the roadwork between Steeles Ave. and 10 Sideroad and 2020 from 10 Sideroad to Hwy. 7.



WELCOME



Public Information Centre:



**Ninth Line (Regional Road 13)
Transportation Corridor Improvements
Highway 407 to 10 Side Road (Regional Road 10)
Town of Halton Hills**

PR-2876



Public Information Centre:



**Trafalgar Road (Regional Road 3)
Transportation Corridor Improvements
Steeles Avenue (Regional Road 8) to Highway 7
Town of Halton Hills**

PR-2960A / PR-2961A

Please Sign In



Members of each Project Team are available to discuss and answer any questions you may have.

1

Halton.ca ☎ 311



**Ninth Line (Regional Road 13)
Transportation Corridor Improvements
Highway 407 to 10 Side Road (Regional Road 10)**

**Town of Halton Hills
PR-2876**

Welcome

**Public Information Centre
November 20, 2014**

Members of the Project Team are available to discuss and answer any questions you may have.

Please Sign In



2

Halton.ca ☎ 311

About this PIC

- Walk-through format
 - Please take your time and walk through our presentation
 - Study Team Members are available to answer any questions you may have about the study
- Please take and fill out a Comment Sheet (“Blue” Sheet)
- Thank you for your interest in the Study



3



Halton.ca ☎ 311

Ninth Line (Regional Road 13) Transportation Corridor Improvements - Highway 407 to 10 Side Road (Regional Road 10)

Purpose of the PIC

- Introduce the study and provide an opportunity for the public to review the display boards and convey their comments or suggestions to the Project Team.
- Provide the following information:
 - Study background
 - Existing conditions
 - Need for improvements
 - Alternative design concepts
 - Evaluation criteria
- Identify the next steps in the process.

Study Purpose

- Halton Region has initiated a Class Environmental Assessment (Class EA) to evaluate and recommend transportation improvements on Ninth Line (RR 13) from Highway 407 to 10 Side Road (RR 10) in the Town of Halton Hills, Ontario.
- The study is being conducted in compliance with Schedule ‘C’ of the Municipal Engineers Association Municipal Class Environmental Assessment planning and design process (October 2000, as amended in 2007 & 2011).



4



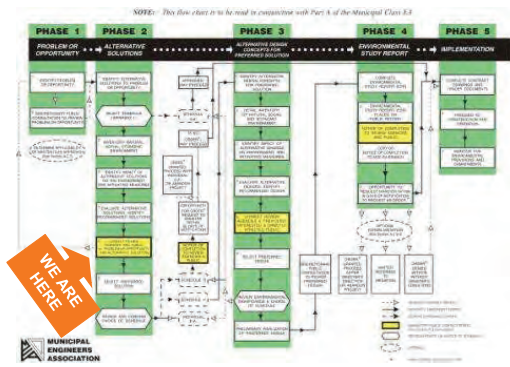
Halton.ca ☎ 311

Ninth Line (Regional Road 13) Transportation Corridor Improvements - Highway 407 to 10 Side Road (Regional Road 10)

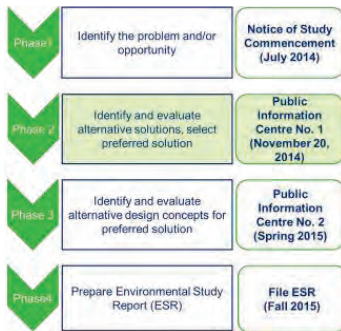
Municipal Class EA Process

Schedule 'C' projects require completion of the first four phases.

Phase 5 is a separate process for the design and construction of improvements.



Study Schedule



5



Halton.ca 311

Ninth Line (Regional Road 13) Transportation Corridor Improvements - Highway 407 to 10 Side Road (Regional Road 10)

Study Area

- Ninth Line (RR 13) is a two-lane roadway with a rural cross-section and changes to a four-lane roadway with an urban cross-section to the north of its intersection with 10 Side Road
- The posted speed limit within the study area is 80 km/h
- It has relatively narrow shoulders (gravel) and ditches on either side
- The Ninth Line Corridor also services agricultural operations in the area



6



Halton.ca 311

Ninth Line (Regional Road 13) Transportation Corridor Improvements - Highway 407 to 10 Side Road (Regional Road 10)

Areas of Interest

- Please place a numbered dot on an "area of interest" that you would like to identify
- Then on a Post-It write down the number that corresponds with the number on your dot and briefly explain why that area is an "area of interest" to you
- Place the Post-It on the blank space of this display board



7

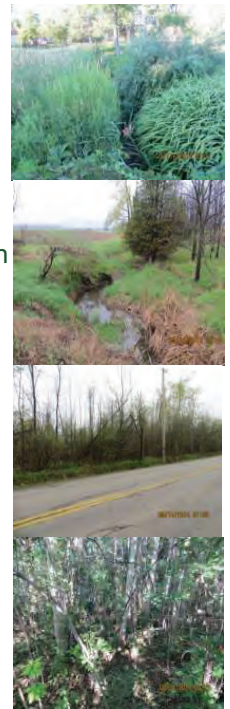


Halton.ca 311

Ninth Line (Regional Road 13) Transportation Corridor Improvements - Highway 407 to 10 Side Road (Regional Road 10)

Existing Conditions (Natural Environment)

- The existing natural environment in the study area is outside of the Greenbelt Plan Area
- The study area:
 - has two woodlots greater than 0.5 hectares and a wetland feature around the 5 Side Road intersection
 - has no designated Environmentally Sensitive Areas (ESA) or Areas of Natural and Scientific Interest (ANSI)



8



Halton.ca 311

Ninth Line (Regional Road 13) Transportation Corridor Improvements - Highway 407 to 10 Side Road (Regional Road 10)

Existing Conditions

- The Ninth Line Transportation Corridor is located within the boundaries of the GTA West Corridor Route Planning Study Area
- Stage 2 of the GTA West Transportation Corridor Route Planning and EA Study is scheduled to be completed in 2018

GTA West
Planning with Vision • Changing the Future

The GTA West Study at a Glance

Have you seen a variety of studies, reports, or maps referring to "GTA West"? How can you tell if the information is endorsed by the Ministry of Transportation?

What is the GTA West?

The GTA West Study is an individual Environmental Assessment being carried out by the Ontario Ministry of Transportation (MTO) for the route planning of a new 50 km transportation corridor between Highway 400 in the Region of York and Highway 401 in the Region of Halton. The new transportation corridor will include a 400-series highway, transitway, and potential goods movement priority features.

How are Other Studies Related?

Municipalities and others may be conducting studies within MTO's GTA West Roadway Study Area (the Study Area). The planning for the GTA West transportation corridor and the identification of the preferred route is the responsibility of the province of Ontario (MTO).

If you see references to "GTA West":

- MTO is considering the findings of other studies.
- MTO's GTA West Study Area is over 50 km long, includes 10 municipalities, and many environmental and community features to consider.
- As a result, MTO's recommendation may differ from those of other planning studies.
- Look for our logo to be sure you are getting the most accurate and up-to-date information about the GTA West Study.

Contact the GTA West Project Team:
 Website: www.gta-west.com
 Email: project_team@gta-west.com
 Toll-Free: 1-877-532-3915
 Twitter: @GTAWestStudy

Logos: Ontario, MMN GROUP, AECOM, URS



9



Existing Conditions (Socio-Economic Environment)

Areas projected to experience growth near the Ninth Line Transportation Corridor include:

- I. Vision Georgetown Study Area
- II. Northernmost section of Ninth Line Study Area (Residential)
- III. 401/407 Premier Gateway Employment Lands
- IV. Halton Peel Boundary Area Transportation Study/GTA West Corridor Protection Area

Date, time and location for the GTA West PIC #1 Meetings:

- Thursday November 27, 2014**
4:00 p.m. to 8:00 p.m.
Gordon Abbott Heritage Hall
Maid Maidens Sportplex
221 Chalkin Street (May 7)
Georgetown, ON
- Tuesday December 2, 2014**
4:00 p.m. to 8:00 p.m.
Western Galton
Chester Le Jardin Conference Centre
5440 Highway 27
Woodbridge, ON
- Thursday December 4, 2014**
4:00 p.m. to 8:00 p.m.
Peel Junior Farmers Hall
Wentworth Fairgrounds
12042 Heart Lake Road
Caledon, ON

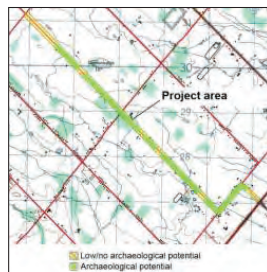


10



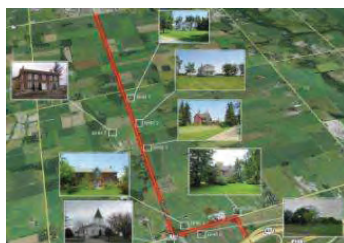
Existing Conditions (Archaeology)

- A Stage 1 Archaeological Assessment was undertaken
- The study area is adjacent to mapped historic farmsteads and built heritage resources which may contain undisturbed archaeological resources
- A Stage 2 Archaeological Assessment will be required if undisturbed areas may be impacted by the proposed improvements



Existing Conditions (Cultural & Built Heritage Resources)

- Eight built heritage resources were identified within the study area
 - Seven historic homestead sites
 - One 19th century church and associated graveyard
- Further Assessment will be required if these resources may be impacted by the proposed improvements



11



Future Conditions (Transportation)

- At present, Ninth Line carries approximately 5,500 vehicles per day. Two-way traffic volumes on Ninth Line are approximately 1,200 vehicles per hour during the weekday (PM) peak hour
- Forecasts indicate an increase to approximately 2,600 vehicles per hour by 2031 for the same period (which exceeds the capacity of a 2 lane road)
- As presently configured, Ninth Line (Regional Road 13) will not be able to accommodate the travel demand growth anticipated by 2031.

Halton **ACTIVE** Transportation Master Plan

The Road to Change Halton Region Transportation Master Plan 2031

September 2011



12



Problem / Opportunity Statement

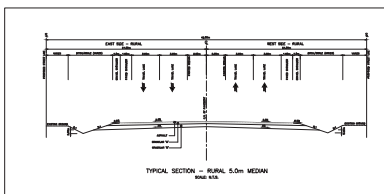
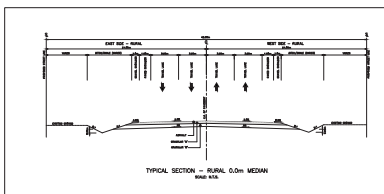
- Improvements are required along Ninth Line between Highway 407 and 10 Side Road to improve:
 - north-south transportation capacity
 - traffic operations and safety
 - accessibility to existing and future developments
 - alternative modes of travel (i.e., cycling)
 - consistency with the Region's transportation strategy and policies

Alternative Solutions Considered

Do Nothing	<ul style="list-style-type: none"> Does not address future needs 	<ul style="list-style-type: none"> Carried forward for comparison purposes only
Limit Development	<ul style="list-style-type: none"> Future projections based on approved future urban area 	<ul style="list-style-type: none"> Not carried forward
Travel Demand Management Measures	<ul style="list-style-type: none"> On their own, do not address the problem Part of the overall transportation strategy 	<ul style="list-style-type: none"> Carried forward as part of the overall transportation strategy
Improved Transit Service (GO Transit) / Other Modes of Transportation	<ul style="list-style-type: none"> On their own, do not address the problem Part of overall transportation strategy 	<ul style="list-style-type: none"> Carried forward as part of the overall transportation strategy
Ninth Line Intersection and/or Operational Improvements	<ul style="list-style-type: none"> On their own, do not address the problem Part of overall transportation strategy 	<ul style="list-style-type: none"> Carried forward as part of the overall transportation strategy
Improvements to Other Roadways	<ul style="list-style-type: none"> On their own, do not address the problem Part of overall transportation strategy 	<ul style="list-style-type: none"> Carried forward as part of the overall transportation strategy
Widen Ninth Line to Four Lanes within Study Area	<ul style="list-style-type: none"> Need identified in Halton Region Transportation Master Plan to support future growth 	<ul style="list-style-type: none"> Carried forward for further consideration

On the basis of the transportation assessment, the preferred solution is to widen Ninth Line to four lanes to address future capacity requirements within the corridor.

Cross Sections for Ninth Line



- Cross-Sections will be modified for constrained areas.

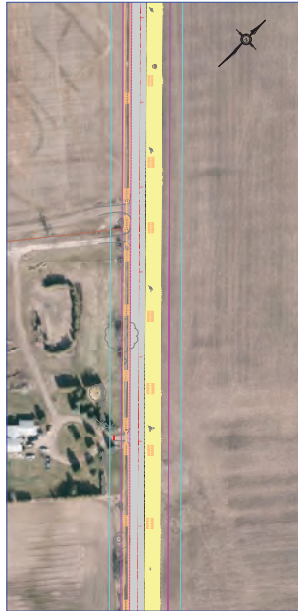
Preliminary Alternative Design Concepts

- Widen about the Centreline
- Widen on East Side
- Widen on West Side
- Combination of above (to minimize impacts)



Preliminary Alternative Design Concepts

- Widen about the Centreline
- Widen on East Side
- Widen on West Side
- Combination of above (to minimize impacts)



Preliminary Alternative Design Concepts

- Widen about the Centreline
- Widen on East Side
- Widen on West Side
- Combination of above (to minimize impacts)



Preliminary Alternative Design Concepts

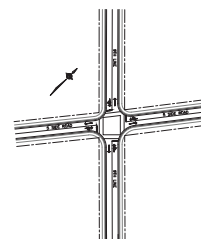
- Widen about the Centreline
- Widen on East Side
- Widen on West Side
- Combination of above (to minimize impacts)



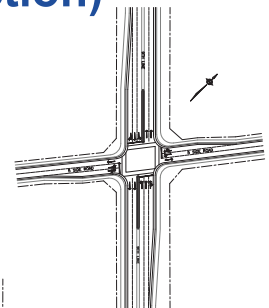
Note: Mitigated Cross-Sections will be developed for constrained areas.



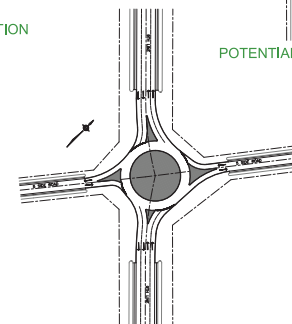
Preliminary Alternative Design Concepts (Intersection)



EXISTING CONFIGURATION



POTENTIAL IMPROVEMENT (WIDENING)



POTENTIAL IMPROVEMENT (ROUNDBOUT)



Evaluation Criteria

- The criteria for evaluating alternative designs are grouped into five major categories:

1. Natural Environment	<ul style="list-style-type: none">Natural Heritage Features and Unique LandformsVegetation Communities and/or Species of ConcernWildlife, Wildlife Habitat, Habitat Linkages and CorridorsWatercourses, Fisheries and Aquatic ResourcesNatural HazardsStormwater Management and Erosion ControlAir Quality
2. Socio-Economic Environment	<ul style="list-style-type: none">Adjacent and Surrounding Land UsesExisting Residential and Business AreasNoise
3. Cultural Environment	<ul style="list-style-type: none">Archaeological Resources and Areas of Archaeological PotentialBuilt Heritage Resources and Cultural LandscapeTrafficStructuresCompatibility with Official Planning Documents
4. Transportation	<ul style="list-style-type: none">Impact on Current and Projected Traffic PatternsActive TransportationIntersection RequirementsSafety
5. Construction Cost	<ul style="list-style-type: none">Appropriation of LandCapital Cost

Next Steps

- Following this Public Information Centre, Halton Region and UEM, will:
 - Review and respond to all written questions and comments.
 - Develop alternative design concepts.
 - Identify the net impacts of the alternative design concepts on the environment, undertake a comparative analysis and select a preliminary preferred design for Ninth Line.
 - Conduct a second Public Information Centre in the Spring of 2015 to present the design concepts, their evaluation, and the recommended preliminary preferred design.

Thank You for Attending

- Please provide comments about the material presented tonight by completing a **Blue Comment Sheet** and submitting it in the comment box provided.
- If you cannot submit your comments tonight please mail, email or fax them by December 3, 2014 to the following contacts:

Ms. Alicia Jakaitis
Transportation Coordinator
Halton Region
1151 Bronte Road
Oakville, Ontario L6M 3L1
Tel: 905-825-6000 ext. 7556
Fax: 905-847-2192
E: alicia.jakaitis@halton.ca

Alvaro L. Almuina, P. Eng.
Project Manager
Urban & Environmental Management Inc.
5100 Orbitor Drive, Suite 300
Mississauga, Ontario L4W 4Z4
Tel: 905-212-9722 ext. 45
Fax: 905-212-9397
E: aalmuina@uemconsulting.com

Frequently Asked Questions

Ninth Line Class Environmental Assessment (EA) Study
Transportation Corridor Improvements
Highway 407 to 10 Side Road (Regional Road 10)
Town of Halton Hills

1. Why study Ninth Line?

- The need to widen Ninth Line was identified in the Region's Transportation Master Plan.
- Future traffic is expected to grow by over 50% by 2031.
- To support future growth and travel demands, improvements are required for Ninth Line.

2. What are the alternative solutions being considered?

- Do Nothing
- Limit Development
- Travel Demand Management Measures
- Improved Transit Service (GO Transit)/Other Modes of Transportation
- Intersection and/or Operational Improvements
- Improvements to Other Roadways
- Improvements (widening) of Ninth Line

3. What Will the improvements to Ninth Line include?

- Widening Ninth Line from two to four lanes to accommodate all modes of transportation
- Intersection and overall traffic operation improvements
- Improved Active Transportation including facilities for cyclists

4. When is the proposed start of construction timing?

- Ninth Line is scheduled to start construction in 2016 from Steeles Avenue to 10 Side Road.
- Timing will be confirmed during the Class EA Study and detailed design processes.

5. How much will it cost to improve Ninth Line (Highway 407 to 10 Side Road)

- The current benchmarked costing has been estimated at approximately \$39 million. Costs will be further refined during the Class EA Study and detailed design processes.

6. What are the next steps of this study?

- Review comments received and respond to any questions
- Develop alignment alternatives within conceptual corridors
- Prepare for Public Information Centre #2 in Spring 2015

7. How can I get involved and stay up to date?

- If you would like to be added to the project mailing list, please contact Alicia Jakaitis (Halton's Project Manager) at alicia.jakaitis@halton.ca (or 905-825-6000 ext. 7556) or Alvaro Almuina (Consultant Project Manager) at aalmuina@uemconsulting.com (or 905-212-9722 x45). You can also visit the project website at www.halton.ca/EAprojects.

Halton Region 9th Line Class EA - PIC#1 Attendees



- Attended PIC (no comment)
 - Attended PIC (commented)
 - Commented (did not attend PIC)
 - IO Property
- Study Area

1,400 700 0 1,400 Meters



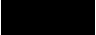
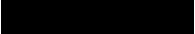
Projection: UTM Zone 17N NAD83
Date: 26 Jan 2015



Comments Received at and following PIC No. 1 and their Consideration

Comment Received From	Date Received and Method of Delivery	Summary of Issues/Concerns	Project Team Response and Method of Response
<p>██████████ Georgetown, ON L7G4S4</p>	<p>November 20, 2014 Submitted Comment Sheet at PIC</p>	<p>Expressed concern about issues a roundabout at Ninth Line and 5 Side Road would cause to truck traffic.</p>	<p>Comments were noted and a written response will be prepared for ██████████. When designing intersections, a program called AutoTurn is used to model the turning radii of large vehicles to ensure that they can be accommodated by the proposed intersection design.</p>
<p>██████████ Mississauga, ON L5C3C5</p>	<p>November 20, 2014 Submitted Comment Sheet at PIC</p>	<p>Reduce speed limit. Dangerous for farm equipment.</p>	<p>Comments were noted and a written response will be prepared for ██████████. The Region's speed policies are being reviewed by the Project Team.</p>
<p>██████████ Georgetown, ON</p>	<p>November 20, 2014 Submitted Comment Sheet at PIC</p>	<p>Keep the road on the present road right-of-way.</p>	<p>Comments were noted and a written response will be prepared for ██████████.</p>
<p>Unidentified Attendee (Address Unknown)</p>	<p>November 20, 2014 Submitted Comment Sheet at PIC</p>	<p>Ninth Line requires four lanes, bicycle lanes, wider shoulders and turning lanes immediately.</p>	<p>Comments were noted. There was no contact information included on the comment sheet, therefore a written responses was not prepared.</p>
<p>██████████ Norval, ON LOP1K0</p>	<p>November 20, 2014 Submitted Comment Sheet at PIC</p>	<p>Posed questions related to potential impacts on individual property. Raised safety concerns posed by the increase in grade along Ninth Line. Suggested that temporary or natural snow drift barriers be installed along the stretch of Ninth Line north of Roundtree Farm.</p>	<p>Comments were noted and a written response will be prepared for ██████████. The possibility of reducing the grade of the hill along Ninth Line between 10 Side Road and 5 Side Road will be evaluated.</p>
<p>██████████ Halton Hills, ON L7G4S8</p>	<p>November 20, 2014 Submitted Comment Sheet at PIC</p>	<p>Informed the Project Team of items on their property that may be affected by road widening.</p>	<p>Comments were noted and a written response will be prepared for ██████████.</p>
<p>██████████ Halton Hills, ON LOP1K0</p>	<p>November 20, 2014 Submitted Comment Sheet at PIC</p>	<p>Concerned about the proximity of the road to the family home.</p>	<p>Comments were noted and a written response will be prepared for ██████████.</p>

Comment Received From	Date Received and Method of Delivery	Summary of Issues/Concerns	Project Team Response and Method of Response
<p>██████████ Norval, ON LOP1K0</p>	<p>November 23, 2014 Submitted to the UEM Project Manager via Facsimile</p>	<p>Expressed desire to preserve the frontage of individual property. Would prefer to see the widening take place on the other side of the road over “the vacant field”.</p>	<p>Comments were noted and a written response will be prepared for ██████████. The preferred alternative design may consist of a combination of widening about the centerline, to the east and to the west.</p>
<p>██████████ Halton Hills, ON LOP1K0</p>	<p>November 24, 2014 Submitted to Halton Region Project Manager via Email</p>	<p>Concerned about the speed of southbound traffic driving over the crest of the hill, and that road widening may encourage more speeding. There is a need to make conditions safer for residents turning into and exiting driveways (e.g. designated turning lanes, reduce grade of hill). Posed the question about whether services/utilities will be offered along Ninth Line. Concerned about surface drainage and the contamination of wells. In favour of road widening.</p>	<p>Comments were noted and a written response will be prepared for ██████████. The Region’s speed policies are being reviewed by the Project Team. The possibility of reducing the grade of the hill along Ninth Line between 10 Side Road and 5 Side Road will be evaluated. The detailed design will consider stormwater management and will mitigate any negative impacts on adjacent properties.</p>
<p>██████████ Georgetown, ON L7G5T5</p>	<p>November 27, 2014 Submitted to UEM Project Manager via Email</p>	<p>Pleased to see both on road and off road facilities for pedestrians and cyclists. Suggested that the width of the multi-use path and bicycle lanes be wider than the minimum standard for safety reasons. Asked that the intersection options for 5 Side Road and Ninth Line be reconsidered. Asked what traffic modelling software would be used to analyze the roundabout.</p>	<p>Comments were noted and a written response was prepared for ██████████ and sent via email.</p>
<p>██████████ Halton Hills, ON L7G5K4</p>	<p>November 27, 2014 Submitted to Halton Region Project Manager via Email</p>	<p>They believe that the 5 Side Road and 10 Side Road intersections would be enhanced with the installation of traffic circles. Concerns at these intersections include speed, vehicle emissions and traveling time. In favour of realigning Ninth Line as was done for Trafalgar Road.</p>	<p>Comments were noted and a written response was prepared for ██████████ and sent via email.</p>

Comment Received From	Date Received and Method of Delivery	Summary of Issues/Concerns	Project Team Response and Method of Response
<p>  Toronto, ON M5H3S1 On behalf of:  Halton Hills, ON </p>	<p>December 5, 2014 Submitted to Halton Region Project Manager via Email (original followed by mail)</p>	<p>The property is currently used primarily for farming and has a farmhouse and ancillary barn. Preliminary concerns involve ensuring that the burden and benefit of any infrastructure improvements are fairly distributed to those impacted. Preference is to first expand the road on public lands and where public lands will not suffice, take equal parts of private lands on both sides of the road. Against widening to the west option.</p> <p>Requesting that the Region review the applicable land use of the property and redesignate it as part of the urban area. Urban infrastructure negatively impact the continuing use of the property for agriculture.</p> <p> asked that the law firm be copied on all correspondence and notices regarding the Ninth Line Class EA Study.</p>	<p>Comments were noted and a written response was prepared for </p>

**Ninth Line (Regional Road 13) Class EA Study
Highway 407 to 10 Side Road (Regional Road 10)**

Public Information Centre #1
Thursday, November 20, 2014
Georgetown District High School (Cafeteria)
70 Guelph Street, Halton Hills, ON L7G 3Z5

Comment Sheet

THE ROUND ABOUT AT 9th & 5 SR
WILL BE AN ISSUE FOR THE TRUCK TRAFFIC.
(SAFETY ISSUE)

THANKS



Place your completed comment sheet in the box provided or return by **Friday, December 5, 2014** to:

Mr. Alvaro L. Almuina P. Eng., M. Eng., PMP, DCE
Project Manager
Urban Environmental Management Inc.
5100 Orbitor Drive, Suite 300

PLS ADD TO MAILING LIST

Ninth Line (Regional Road 13) Class EA Study
Highway 407 to 10 Side Road (Regional Road 10)

Public Information Centre #1
Thursday, November 20, 2014
Georgetown District High School (Cafeteria)
70 Guelph Street, Halton Hills, ON L7G 3Z5

Comment Sheet

*- Reduce speed limit
- dangerous for farm equipment*

Place your completed comment sheet in the box provided or return by **Friday, December 5, 2014** to:

Mr. Alvaro L. Almuina P. Eng., M. Eng., PMP, DCE
Project Manager
Urban Environmental Management Inc.

Ninth Line (Regional Road 13) Class EA Study Highway 407 to 10 Side Road (Regional Road 10)

Public Information Centre #1
Thursday, November 20, 2014
Georgetown District High School (Cafeteria)
70 Guelph Street, Halton Hills, ON L7G 3Z5

Comment Sheet

~ We would like the road
to be on the present road
right of way

Place your completed comment sheet in the box provided or return by **Friday, December 5, 2014** to:

Mr. Alvaro L. Almuina P. Eng., M. Eng., PMP, DCE
Project Manager
Urban Environmental Management inc.
5100 Orbitor Drive, Suite 300

**Ninth Line (Regional Road 13) Class EA Study
Highway 407 to 10 Side Road (Regional Road 10)**

Public Information Centre #1
Thursday, November 20, 2014
Georgetown District High School (Cafeteria)
70 Guelph Street, Halton Hills, ON L7G 3Z5

Comment Sheet

NEED 4 LANE NOW

///

NEED BIKE LANE

NEED WIDER

SHOULDERS

NEED TURNING LANE

Place your completed comment sheet in the box provided or return by **Friday, December 5, 2014** to:

Mr. Alvaro L. Almuina P. Eng., M. Eng., PMP, DCE
Project Manager
Urban Environmental Management Inc.
5100 Orbitor Drive, Suite 300

Ninth Line (Regional Road 13) Class EA Study Highway 407 to 10 Side Road (Regional Road 10)

Public Information Centre #1
Thursday, November 20, 2014
Georgetown District High School (Cafeteria)
70 Guelph Street, Halton Hills, ON L7G 3Z5

Comment Sheet

⑤ ON BOARD SHOWING "AREAS OF INTEREST"

WE HAVE SEVERAL CONCERNS:

- IF ROAD IS WIDENED ON EAST SIDE ONLY OR IF OTHER ITEMS ADDED SUCH AS A MULTI-PURPOSE TRAIL, WILL LIKELY AFFECT OUR TURN AROUND, ALLIARS, AND POSSIBLY TOO CLOSE TO DETACHED GARAGE
- WHAT SERVICES MAY BE ADDED/ NEGOTIATED WITH THIRD PARTIES:
 - NATURAL GAS?
 - CABLE?
 - FIBRE OPTIC CABLE?
- WILL THE INCREASE IN GRADE JUST NORTH OF OUR PROPERTY BE LEVELLED OUT? ~~THESE~~ CURRENT ELEVATION CAUSES HUGE ISSUES WITH VISIBILITY, BOTH FOR NORTH & SOUTHBOUND TRAFFIC.
- IMPLEMENTATION OF TEMPORARY OR NATURAL SNOW BARRIER TO ~~IT~~ HELP ALLEVIATE GROUND DRIFTING ON ROADWAY --- MANY ACCIDENTS ON STRETCH NORTH AROUND ROUNDTREE FARM.

Place your completed comment sheet in the box provided or return by **Friday, December 5, 2014** to:

Mr. Alvaro L. Almuina P. Eng., M. Eng., PMP, DCE
Project Manager
Urban Environmental Management Inc.
5100 Orbitor Drive, Suite 300

Ninth Line (Regional Road 13) Class EA Study
Highway 407 to 10 Side Road (Regional Road 10)

Public Information Centre #1
Thursday, November 20, 2014
Georgetown District High School (Cafeteria)
70 Guelph Street, Halton Hills, ON L7G 3Z5

Comment Sheet

We just recently put up an aluminium fence that is located approx. 10-15 feet from the main road. We would like to keep it up if possible. Also, we have septic on our property going from our house towards the road & I am worried that when the construction happens, it may get ruined. So please keep it in mind.

Lastly, the driveway is made of interlock so I don't know how this would get affected. Please contact me at (416) 873-1069 or angelapepek@gmail.com, I am the daughter living at this property & my parents don't speak well English. Thank you.

- Angela

Place your completed comment sheet in the box provided or return by **Friday, December 5, 2014** to:

Mr. Alvaro L. Almuina P. Eng., M. Eng., PMP, DCE
Project Manager
Urban Environmental Management Inc.
5100 Orbitor Drive, Suite 300

Ninth Line (Regional Road 13) Class EA Study Highway 407 to 10 Side Road (Regional Road 10)

Public Information Centre #1
Thursday, November 20, 2014
Georgetown District High School (Cafeteria)
70 Guelph Street, Halton Hills, ON L7G 3Z5

Comment Sheet

OUR HOUSE IS LOCATED VERY CLOSE TO THE ROAD AS IT IS AND WE WANT THE ROAD AS FAR AWAY FROM THE HOUSE.

Place your completed comment sheet in the box provided or return by **Friday, December 5, 2014** to:

Mr. Alvaro L. Almuina P. Eng., M. Eng., PMP, DCE
Project Manager
Urban Environmental Management Inc.
5100 Orbitor Drive, Suite 300



→ ALVARO

Ninth Line (Regional Road 13) Class EA Study Highway 407 to 10 Side Road (Regional Road 10)

Public Information Centre #1
Thursday, November 20, 2014
Georgetown District High School (Cafeteria)
70 Guelph Street, Halton Hills, ON L7G 3Z5

Comment Sheet

We are interested in preserving our frontage of our property. Especially since the proposed expansion will consume the majority of it. Being a resident of the area for over 50 years this prospect has created considerable stress. We hope the vacant field across could absorb most of the expansion.

Place your completed comment sheet in the box provided or return by Friday, December 5, 2014 to:

Mr. Alvaro L. Almuina P. Eng., M. Eng., PMP, DCE
Project Manager
Urban Environmental Management Inc.
5100 Orbitor Drive, Suite 300

December 5, 2014

Delivered via E-mail
Original to follow via mail

Halton Region
1151 Bronte Road
Oakville, ON L6M 3L1

Attention: Alicia Jakaitis,
Transportation Coordinator

Dear Ms. Jakaitis:

Re: Class Environmental Assessment Study, Ninth Line (Regional Road 13)
Transportation Corridor Improvements, Highway 407 to 10 Side Road, (Regional
Road 10) Town of Halton Hills (the "EA")
[REDACTED], Halton Hills (the "Property")

We act on behalf of the owner of the Property, [REDACTED] as well as for [REDACTED], and are writing further to Halton Region's EA noted above.

The Property

The Property consists of approximately 200 acres of land with frontage on 8th Line, No. 10 Sideroad, and 9th Line. The Property is located just to the south of the current urban area for Georgetown as the same is identified in the Region's Official Plan. In addition, the Region's Official Plan identifies urban uses between the Property and the access to the 401/407 to the south, and Winston Churchill Blvd to the east.

The Property is currently used primarily for farming and includes a farmhouse and ancillary barn.

Preliminary Comments on EA

We understand that the primary purpose of the EA is to determine the preferred means by which the transportation network can be improved to accommodate the future needs of the area. In particular, Ninth Line between Highway 407 and 10 Side Road has been identified as an important north/south transportation corridor and in need of additional capacity.

We understand that the Region is still early in the EA process and that the design concepts shown at the recent public meeting are preliminary. As such, any comments we provide are also preliminary.

As a general comment, our clients understand the importance of improving the road network connecting Georgetown to the 401/407 to allow for and support future growth. Where our clients have concerns is to ensure that the burden and the benefit of any such infrastructure are fairly distributed to those who will be impacted by the same.

Infrastructure Impacts Must be Fair

As it relates to the EA, ensuring that the infrastructure burden is distributed fairly includes giving preference to design concepts that ensure that any road expansions are first, and where possible, from public lands, and second, where public lands will not suffice, equally taken between private land owners. For example, as it relates to the preliminary alternatives shown for the road widening, our clients strongly object to any option that would focus the widening on the west side of 9th Line, and in doing so, have an undue impact on their lands.

Similarly, we believe that the EA and the requirement to improve 9th Line are a further indicator that the Region needs to undertake a review of the applicable land use of the Property. The continued encroachment of urban uses around the property, and the need for urban infrastructure (as exemplified by the need for these improvements to 9th line) impact the continuing use of the lands as a farm. In addition, the significant expenditures to bring urban services to and around the Property make it apparent that the existing farm uses are no longer an appropriate long term use of the Property.

As such, we believe it is appropriate that the Property be redesignated as part of the urban area and suggest the Region give consideration to the same in its next Official Plan review so as to align these infrastructure investments with the appropriate land use. While we understand that this is outside of the scope of the EA, it is important that attention be given to all related aspects of the future development along 9th Line and that the land use and infrastructure be planned together.

Please feel free to contact me if you should have any questions or wish to discuss this matter further. Also, we ask that you copy us on any correspondence and notices with respect to this matter.

Yours truly,

MILLER THOMSON LLP

Per:

[REDACTED]

cc:

Alvaro Almuina, Urban & Environmental Management Inc.
Henry Parasol





March 12, 2015
Project No. 14-508

SENT BY EMAIL ONLY: [REDACTED]

[REDACTED]
Georgetown, ON
L7G 4S4

**Re: Ninth Line (Regional Road 13) Class EA Study from Highway 407 to 10 Side Road (Regional Road 10)
Public Information Centre #1 (November 20, 2014)
Halton Region Project No. PR2876**

Thank you for attending the Public Information Centre (PIC) for the Ninth Line Class EA study on Thursday, November 20, 2014 and for the comments you provided to the Project Team. The Project Team will take into consideration your comments as we proceed with the Class Environmental Assessment (EA) Study process.

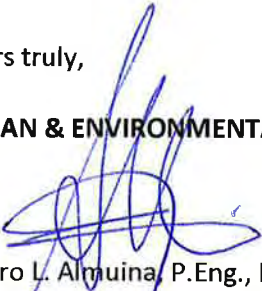
Please be advised that intersection analyses will be undertaken to evaluate whether a roundabout configuration is a suitable design for Ninth Line and 5 Side Road. A number of evaluation criteria, such as, but not limited to: geometrics, traffic operations, property impacts, heavy truck turning movements and accommodation for active transportation is considered when assessing the feasibility of the roundabout option. The preliminary preferred alternative for this intersection will be presented to the public at PIC 2 and the preferred alternative will be documented in the Environmental Study Report (ESR), which will be available for public review and comment.

The next PIC is scheduled for Spring 2015, where the Project Team will be presenting the preliminary preferred alternative for the Ninth Line Corridor. You will be notified of the next PIC by direct mailing. Should you have any questions or concerns between now and the next PIC, please do not hesitate to contact the undersigned.

Again, thank you for providing your comments. Your comments will form part of the public record for this study and will be documented in the Environmental Study Report.

Yours truly,

URBAN & ENVIRONMENTAL MANAGEMENT INC.


Alvaro L. Almuina, P.Eng., M.Eng., PMP, DCE
Project Manager

C: A. Jakaitis, Halton Region



March 12, 2015
Project No. 14-508

SENT BY EMAIL ONLY: [REDACTED]

[REDACTED]
Halton Hills, ON
L0P 1K0

**Re: Ninth Line (Regional Road 13) Class EA Study from Highway 407 to 10 Side Road (Regional Road 10)
Public Information Centre #1 (November 20, 2014)
Halton Region Project No. PR2876**

Thank you for attending the Public Information Centre (PIC) for the Ninth Line Class EA study on Thursday, November 20, 2014 and for the comments you provided to the Project Team. The Project Team will take into consideration your comments as we proceed with the Class Environmental Assessment (EA) Study process. Please find below our responses to the comments that you provided:

1. Please be advised that any property impacts of individual landowners to accommodate the future Ninth Line corridor improvements will be acquired at fair market value through the Region's standard property acquisition process. It should also be noted that any impacts to existing encroachments will be mitigated and separate consultation will be undertaken to discuss the changes across property frontages.
2. It is the Study Team's understanding that the utility companies (with the exception of hydro) do not have plans to extend their services along Ninth Line. However, the ultimate right-of-way of Ninth Line will reserve sufficient space to allow for the accommodation of utilities at such time that their service is expanded.
3. The Class EA Study on Ninth Line from Highway 407 to 10 Side Road is considering a wide range of options for transportation corridor improvements to satisfy future travel demands to 2031. In order to best address travel demand along Ninth Line, a number of road improvement alternatives will be examined as part of the study, including widening of the roadway, cross-sectional improvements (including both vertical and horizontal alignment improvements), over-all traffic operations, as well as the impact of such improvements on the social, cultural, economic and natural environments. In addition, the Region's Transportation Services Public Works Department currently installs snow fence along Ninth Line between 5 Side Road and 10 Side Road during the winter months as part of their winter roadway management program.

The next PIC is scheduled for Spring 2015 where the Project Team will be presenting the preliminary preferred alternative for the Ninth Line Corridor. You will be notified of the next PIC by direct mailing.

Should you have any questions or concerns between now and the next PIC, please do not hesitate to contact the undersigned.

Again, thank you for providing your comments. Your comments will form part of the public record for this study and will be documented in the Environmental Study Report.

Yours truly,

URBAN & ENVIRONMENTAL MANAGEMENT INC.



Alvaro L. Almuina, P.Eng., M.Eng., PMP, DCE
Project Manager

C: A. Jakaitis, Halton Region

Encl. Map of Regional Road Network Snow Fence Locations (2013-2014)



March 12, 2015
Project No. 14-508

SENT BY EMAIL ONLY: [REDACTED]

[REDACTED]
Georgetown, ON
L7G 4X6

**Re: Ninth Line (Regional Road 13) Class EA Study from Highway 407 to 10 Side Road (Regional Road 10)
Public Information Centre #1 (November 20, 2014)
Halton Region Project No. PR2876**

Thank you for attending the Public Information Centre (PIC) for the Ninth Line Class EA study on Thursday, November 20, 2014 and for the comments you provided to the Project Team. The Project Team will take into consideration your comments as we proceed with the Class Environmental Assessment (EA) Study process.

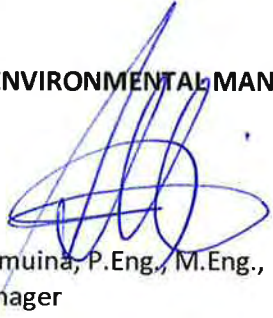
In order to best address travel demand along Ninth Line, a number of road improvement alternatives will be examined as part of the study, including widening of the roadway, cross-sectional improvements, overall traffic operations, as well as the impact of such improvements on the social, cultural, economic and natural environments. Please note that the Technically Preferred Alternative for Ninth Line will be developed through careful consideration of the existing and future conditions, as well as the impacts on the social and natural environments, including residences within the study area.

The next PIC is scheduled for Spring 2015 where the Project Team will be presenting the preliminary preferred alternative for the Ninth Line Corridor. You will be notified of the next PIC by direct mailing. Should you have any questions or concerns between now and the next PIC, please do not hesitate to contact the undersigned.

Again, thank you for providing your comments. Your comments will form part of the public record for this study and will be documented in the final Environmental Study Report.

Yours truly,

URBAN & ENVIRONMENTAL MANAGEMENT INC.


Alvaro L. Almuina, P.Eng., M.Eng., PMP, DCE
Project Manager

C: A. Jakaitis, Halton Region



March 12, 2015
Project No. 14-508

SENT BY EMAIL ONLY: [REDACTED]

[REDACTED]
Norval, ON
L0P 1K0

**Re: Ninth Line (Regional Road 13) Class EA Study from Highway 407 to 10 Side Road (Regional Road 10)
Public Information Centre #1 (November 20, 2014)
Halton Region Project No. PR2876**

Thank you for attending the Public Information Centre (PIC) for the Ninth Line Class EA study on Thursday, November 20, 2014 and for the comments you provided to the Project Team. The Project Team will take into consideration your comments as we proceed with the Class Environmental Assessment (EA) Study process. Following are responses to the comments you provided:

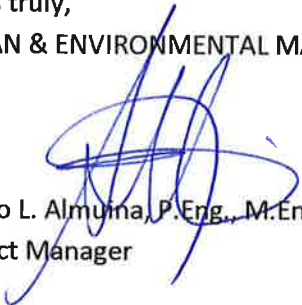
1. Please be advised that as part of the Needs and Justification of the Class EA Study process, a review of existing conditions was undertaken to evaluate current operational performance and the collision history and will form part of the overall evaluation of the preferred alternative for the Ninth Line corridor. Please also be advised that as part of the preferred alternative for Ninth Line, a centre left turn lane adjacent to residential properties will be included (as required) to allow for greater ease of turning movements into and out of driveways.
2. It is the Study Team's understanding that the utility companies (with the exception of hydro) do not have plans to extend their services along Ninth Line. However, the ultimate right-of-way of Ninth Line will reserve sufficient space to allow for the accommodation of utilities at such time if they wish to expand.
3. We also acknowledge your concerns regarding stormwater runoff contaminating your water well. Please be advised that a hydrogeotechnical study will be completed during the detailed design phase of the project. As part of the geotechnical evaluation, potential impacts to drainage infrastructure will be examined and any mitigation measures will be determined. Where required, groundwater protection measures will be put in place to ensure that the groundwater resources (e.g. existing wells) are not impacted during and after construction.

The next PIC is scheduled for Spring 2015 where the Project Team will be presenting the preliminary preferred alternative for the Ninth Line Corridor. You will be notified of the next PIC by direct mailing. Should, you have any questions or concerns between now and the next PIC, please do not hesitate to contact the undersigned.

Again, thank you for providing your comments. Your comments will form part of the public record for this study and will be documented in the Environmental Study Report.

Yours truly,


URBAN & ENVIRONMENTAL MANAGEMENT INC.



Alvaro L. Almuina, P.Eng., M.Eng., PMP, DCE
Project Manager

C: A. Jakaitis, Halton Region

SENT BY EMAIL ONLY: 


Mississauga, ON
L5C 3C5

**Re: Ninth Line (Regional Road 13) Class EA Study from Highway 407 to 10 Side Road (Regional Road 10)
Public Information Centre #1 (November 20, 2014)
Halton Region Project No. PR2876**

Thank you for attending the Public Information Centre (PIC) for the Ninth Line Class EA study on Thursday, November 20, 2014 and for the comments you provided to the Project Team. The Project Team will take into consideration your comments as we proceed with the Class Environmental Assessment (EA) Study process.


Please be advised that as part of the Needs and Justification of the Class EA Study process, a review of existing conditions was undertaken to evaluate current operational performance and the historical collision history and will form part of the overall evaluation of the preferred alternative for the Ninth Line corridor. Please also be advised that as part of the preferred alternative for Ninth Line, there will be improvements to the vertical alignment, accommodation for farm vehicles and a centre left turn lane adjacent to residential properties will be included (as required) to allow for greater ease of turning movements into and out of driveways.

The next PIC is scheduled for Spring 2015 where the Project Team will be presenting the preliminary preferred alternative for the Ninth Line Corridor. You will be notified of the next PIC by direct mailing. Should you have any questions or concerns between now and the next PIC, please do not hesitate to contact the undersigned.

Again, thank you for providing your comments. Your comments will form part of the public record for this study and will be documented in the Environmental Study Report.

Yours truly,

URBAN & ENVIRONMENTAL MANAGEMENT INC.


Alvaro L. Almuina, P.Eng., M.Eng., PMP, DCE
Project Manager

C: A. Jakaitis, Halton Region



March 12, 2015
Project No. 14-508

SENT BY EMAIL ONLY: [REDACTED]

[REDACTED]
Halton Hills, ON
L7G 4S8

**Re: Ninth Line (Regional Road 13) Class EA Study from Highway 407 to 10 Side Road (Regional Road 10)
Public Information Centre #1 (November 20, 2014)
Halton Region Project No. PR2876**

Thank you for attending the Public Information Centre (PIC) for the Ninth Line Class EA study on Thursday, November 20, 2014 and for the comments you provided to the Project Team. The Project Team will take into consideration your comments as we proceed with the Class Environmental Assessment (EA) Study process.


Please be advised that any property impacts of individual landowners to accommodate the future Ninth Line corridor improvements will be acquired at fair market value through the Region's standard property acquisition process. It should also be noted that any impacts to landscaping and/or fencing and existing encroachments, such as septic systems, will be mitigated and separate consultation will be undertaken to discuss the changes across property frontages.

The next PIC is scheduled for Spring 2015 where the Project Team will be presenting the preliminary preferred alternative for the Ninth Line Corridor. You will be notified of the next PIC by direct mailing. Should you have any questions or concerns between now and the next PIC, please do not hesitate to contact the undersigned.

Again, thank you for providing your comments. Your comments will form part of the public record for this study and will be documented in the Environmental Study Report.

Yours truly,

URBAN & ENVIRONMENTAL MANAGEMENT INC.


Alvaro Almuina, P.Eng., M.Eng., PMP, DCE
Project Manager

C: A. Jakaitis, Halton Region



March 12, 2015
Project No. 14-508

SENT BY EMAIL ONLY: [REDACTED]

[REDACTED]
Halton Hills, ON
L0P 1K0

**Re: Ninth Line (Regional Road 13) Class EA Study from Highway 407 to 10 Side Road (Regional Road 10)
Public Information Centre #1 (November 20, 2014)
Halton Region Project No. PR2876**

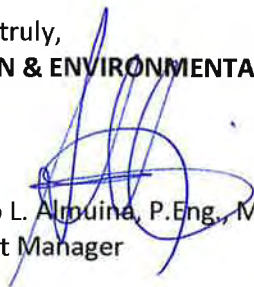
Thank you for attending the Public Information Centre (PIC) for the Ninth Line Class EA study on Thursday, November 20, 2014 and for the comments you provided to the Project Team. The Project Team will take into consideration your comments as we proceed with through the Class Environmental Assessment (EA) Study process.

We understand your concerns regarding preservation of your property frontage. The Project Team is currently evaluating the impacts of the various road reconstruction alignments and will take your comments into consideration. Please be advised that any property impacts of individual landowners to accommodate the future Ninth Line corridor improvements will be acquired at fair market value through the Region's standard property acquisition process. It should also be noted that any impacts to landscaping and/or fencing will be mitigated and separate consultation will be undertaken to discuss the changes across property frontages

The next PIC is scheduled for Spring 2015 where the Project Team will be presenting the preliminary preferred alternative for the Ninth Line Corridor. You will be notified of the next PIC by direct mailing. Should you have any questions or concerns between now and the next PIC, please do not hesitate to contact the undersigned.

Again, thank you for providing your comments. Your comments will form part of the public record for this study and will be documented in the Environmental Study Report.

Yours truly,
URBAN & ENVIRONMENTAL MANAGEMENT INC.

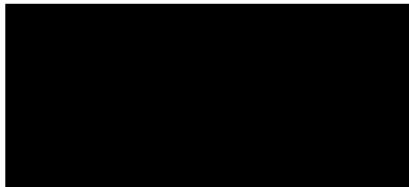

Alvaro L. Almuina, P.Eng., M.Eng., PMP, DCE
Project Manager

C: A. Jakaitis, Halton Region



December 12, 2014
Project No. 14-508

SENT BY EMAIL ONLY: [REDACTED]



Toronto, Ontario
M5H 3S1

Re: Class Environmental Assessment Study Ninth Line Transportation Corridor Improvements - Highway 407 to 10 Side Road (Town of Halton Hills)

Dear Mr. [REDACTED]

This letter is in reference to your December 5, 2014 letter to Ms. Alicia Jakaitis, Halton Region Project Manager for the Class Environmental Assessment Study of Ninth Line Transportation Corridor Improvements - Highway 407 to 10 Side Road (Town of Halton Hills).

Thank you for your interest and comments on behalf of [REDACTED] related to the Ninth Line Corridor Improvements from Highway 407 to 10 Side Road. We appreciate that the primary concern at this time is with the potential balance of impacts and benefits as may be associated with the conceptual corridor alternatives presented at the recent Public Information Centre (PIC) on November 20, 2014.

The Project Team will consider your observations/comments as per your letter of December 5, 2014 as we progress with this study. In general, it is acknowledged that each alternative will have impacts to private lands, and these impacts vary and are dependent on the alternatives considered. While no decision has been made yet, it was the intent of the recent PIC to present the conceptual corridor alternatives that will be developed for evaluation later in the study process. The potential impacts to your client's properties will be assessed and considered as part of the process through the analysis and evaluation of alternatives.

As noted in your letter, any changes in land use designations are outside of this study process. Any changes in land use designations could be considered as part of future Official Plan Review Update.


Your comments will be added to the public record and the Project Team will consider them as we move forward. As requested you will be added to our mailing list to receive direct correspondence from the Region with respect to all future notices on this study.

We look forward to working with you as the study progresses.

Should you have further questions, please feel free to contact me at 905-212.9722 x 45 or
aalmuina@uemconsulting.com.

Yours truly,

URBAN & ENVIRONMENTAL MANAGEMENT INC.



Alvaro L. Almuina, P.Eng., M.Eng., PMP, DCE
Project Manager

c: A. Jakaitis, Halton Region