

MATERIALS	
SUPPLIED & INSTALLED BY REGION	SUPPLIED & INSTALLED BY OTHERS
1-STRAIGHT TAIL PIECE	20 mm TYPE K SOFT COPPER SERVICE AS PER REGIONAL DESIGN CRITERIA PRESSURE REDUCING VALVE (IF REQUIRED)
1-15X20 mm WATER METER C/W TOUCH READ DISC AND BRACKET	
READ DISC AND WIRE	
1-RIGHT ANGLE BLDG. CONTROL VALVE	

FOR RESIDENTIAL WATER METER INSTALLATION ONLY

REFER TO RH 410.12 FOR BACKFLOW PREVENTION AND RH 410.15 AND RH 410.16 FOR METER CABINET INSTALLATION AS REQUIRED

NOTES:

- BUILDING CONTROL VALVE TO BE THE SAME SIZE AS INCOMING PIPE.
- INCOMING SERVICE TO BUILDING MUST BE A MINIMUM OF 20mm TYPE K SOFT COPPER.
- ALL PIPE WORK DONE BY CONTRACTOR/BUILDER, INCLUDING CONNECTION TO TAIL PIECE IN ACCORDANCE WITH ONTARIO BUILDING CODE.
- TOUCH READ DISC AND WIRE TO BE SECURED TO HYDRO STACK WITH PLASTIC BRACKET (ONTARIO HYDRO APPROVED) OR OTHER LOCATION AS APPROVED BY THE REGION OF HALTON.
- CURB STOP/BOX MUST BE TO GRADE AND OPERATIONAL PRIOR TO OCCUPANCY.
- METER INSTALLATION SHALL BE SCHEDULED BY APPOINTMENT PRIOR TO OCCUPANCY.
CALL (905) 825-6000 OR 878-8113
- WHERE THE STATIC PRESSURE EXCEEDS 550kPa (80psi). A PRESSURE REDUCING VALVE SHALL BE INSTALLED AFTER THE METER TO LIMIT THE MAX. STATIC PRESSURE TO NOT MORE THAN 550kPa (80psi) IN AREAS THAT MAY BE OCCUPIED.
- IF BASEMENT IS TO BE COMPLETED PRIOR TO OCCUPANCY, CONTRACTOR MUST ARRANGE FOR INSTALLATION OF READ DISC WIRE PRIOR TO CEILING AND WALLS BEING INSTALLED OR PROVIDE A 12 mm CONDUIT FROM THE METER TO THE HYDRO STACK COMPLETE WITH FISH WIRE.
- WATER PRESSURE TO BE CONFIRMED BY CONTRACTOR OR BUILDING INSPECTOR.
- ALL DIMENSIONS IN MILLIMETERS UNLESS OTHERWISE NOTED.

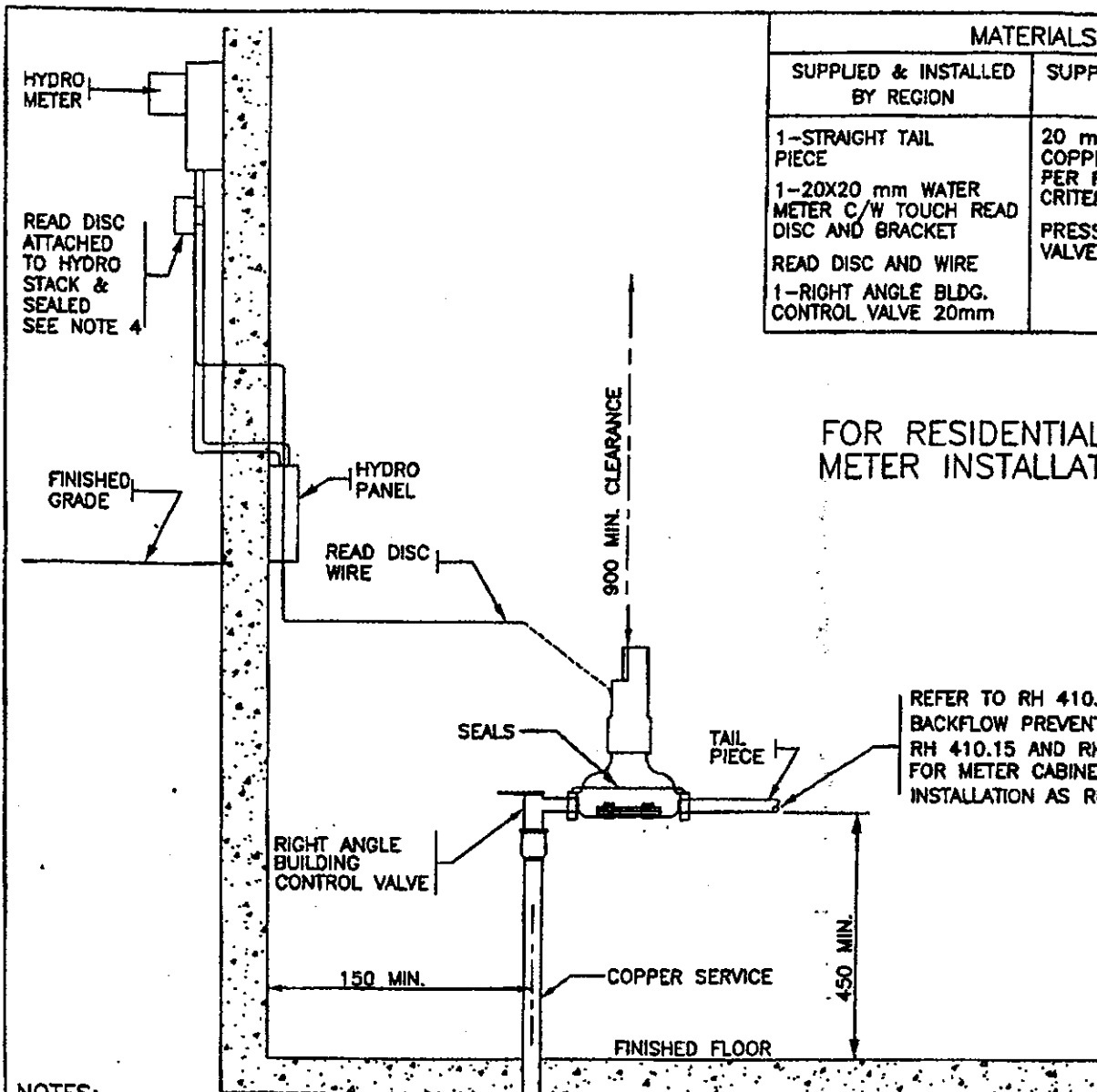
THE REGIONAL MUNICIPALITY OF HALTON
PLANNING AND PUBLIC WORKS DEPARTMENT

Date MAY 2006 Rev. 1 NTS

STANDARD 15 X 20mm WATER
METER INSTALLATION

APPROVED

DIRECTOR, ENGINEERING SERVICES
REGION STANDARD RH 410.01



MATERIALS	
SUPPLIED & INSTALLED BY REGION	SUPPLIED & INSTALLED BY OTHERS
1-STRAIGHT TAIL PIECE	20 mm TYPE K SOFT COPPER SERVICE AS PER REGIONAL DESIGN CRITERIA
1-20X20 mm WATER METER C/W TOUCH READ DISC AND BRACKET	PRESSURE REDUCING VALVE (IF REQUIRED)
READ DISC AND WIRE	
1-RIGHT ANGLE BLDG. CONTROL VALVE 20mm	

FOR RESIDENTIAL WATER METER INSTALLATION ONLY

REFER TO RH 410.12 FOR BACKFLOW PREVENTION AND RH 410.15 AND RH 410.16 FOR METER CABINET INSTALLATION AS REQUIRED

NOTES:

- BUILDING CONTROL VALVE TO BE THE SAME SIZE AS INCOMING PIPE.
- INCOMING SERVICE TO BUILDING MUST BE A MINIMUM OF 20mm TYPE K SOFT COPPER.
- ALL PIPE WORK DONE BY CONTRACTOR/BUILDER, INCLUDING CONNECTION TO TAIL PIECE IN ACCORDANCE WITH ONTARIO BUILDING CODE.
- TOUCH READ DISC AND WIRE TO BE SECURED TO HYDRO STACK WITH PLASTIC BRACKET (ONTARIO HYDRO APPROVED) OR OTHER LOCATION AS APPROVED BY THE REGION OF HALTON.
- CURB STOP/BOX MUST BE TO GRADE AND OPERATIONAL PRIOR TO OCCUPANCY.
- METER INSTALLATION SHALL BE SCHEDULED BY APPOINTMENT PRIOR TO OCCUPANCY. CALL (905) 825-8000 OR 878-8113
- WHERE THE STATIC PRESSURE EXCEEDS 550kPa (80psi). A PRESSURE REDUCING VALVE SHALL BE INSTALLED AFTER THE METER TO LIMIT THE MAX. STATIC PRESSURE TO NOT MORE THAN 550kPa (80psi) IN AREAS THAT MAY BE OCCUPIED.
- IF BASEMENT IS TO BE COMPLETED PRIOR TO OCCUPANCY, CONTRACTOR MUST ARRANGE FOR INSTALLATION OF READ DISC WIRE PRIOR TO CEILING AND WALLS BEING INSTALLED OR PROVIDE A 12 mm CONDUIT FROM THE METER TO THE HYDRO STACK COMPLETE WITH FISH WIRE.
- WATER PRESSURE TO BE CONFIRMED BY CONTRACTOR OR BUILDING INSPECTOR.
- ALL DIMENSIONS IN MILLIMETERS UNLESS OTHERWISE NOTED.

THE REGIONAL MUNICIPALITY OF HALTON
PLANNING AND PUBLIC WORKS DEPARTMENT

Date MAY 2006 Rev. 1 NTS

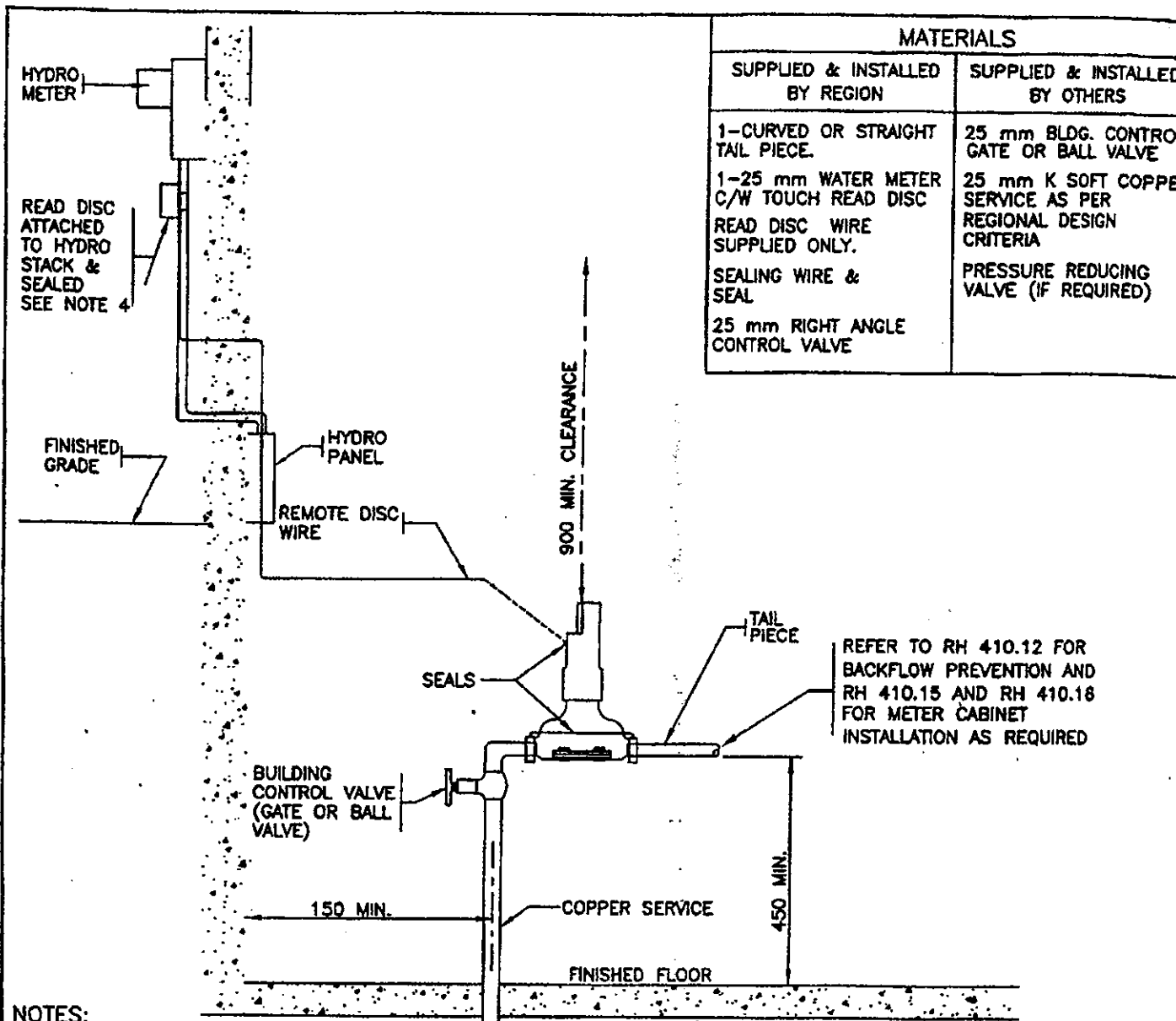
APPROVED

STANDARD 20mm WATER METER INSTALLATION

DIRECTOR, ENGINEERING SERVICES

REGION STANDARD

RH 410.02



MATERIALS	
SUPPLIED & INSTALLED BY REGION	SUPPLIED & INSTALLED BY OTHERS
1-CURVED OR STRAIGHT TAIL PIECE.	25 mm BLDG. CONTROL GATE OR BALL VALVE
1-25 mm WATER METER C/W TOUCH READ DISC	25 mm K SOFT COPPER SERVICE AS PER REGIONAL DESIGN CRITERIA
READ DISC WIRE SUPPLIED ONLY.	PRESSURE REDUCING VALVE (IF REQUIRED)
SEALING WIRE & SEAL	
25 mm RIGHT ANGLE CONTROL VALVE	

NOTES:

- BUILDING CONTROL VALVE TO BE THE SAME SIZE AS INCOMING PIPE.
- INCOMING SERVICE TO BUILDING MUST BE A MINIMUM OF 25 mm TYPE K SOFT COPPER (COMMERCIAL/INDUSTRIAL/RESIDENTIAL).
- ALL PIPE WORK DONE BY CONTRACTOR/BUILDER, INCLUDING CONNECTION TO TAIL PIECE IN ACCORDANCE WITH ONTARIO BUILDING CODE.
- TOUCH READ DISC AND WIRE TO BE SECURED TO HYDRO STACK WITH PLASTIC BRACKET (ONTARIO HYDRO APPROVED) OR OTHER LOCATION AS APPROVED BY THE REGION OF HALTON
- CURB STOP/BOX MUST BE TO GRADE AND OPERATIONAL PRIOR TO OCCUPANCY.
- METER INSTALLATION SHALL BE SCHEDULED BY APPOINTMENT PRIOR TO OCCUPANCY. CALL (905) 825-8000 OR 878-8113
- WHERE THE STATIC PRESSURE EXCEEDS 550kPa (80psi). A PRESSURE REDUCING VALVE SHALL BE INSTALLED AFTER THE METER AND BYPASS TO LIMIT THE MAX. STATIC PRESSURE TO NOT MORE THAN 550kPa (80psi) IN AREAS THAT MAY BE OCCUPIED.
- IF BASEMENT (RESIDENTIAL) IS TO BE COMPLETED PRIOR TO OCCUPANCY, CONTRACTOR MUST ARRANGE FOR INSTALLATION OF READ DISC WIRE PRIOR TO CEILING AND WALLS BEING INSTALLED OR PROVIDE A 12 MM CONDUIT FROM THE METER TO THE HYDRO STACK COMPLETE WITH FISH WIRE.
- WATER PRESSURE TO BE CONFIRMED BY CONTRACTOR OR BUILDING INSPECTOR.
- CONTRACTOR TO INSTALL TRT WIRE ON ALL COMMERCIAL/INDUSTRIAL INSTALLATIONS.
- ALL DIMENSIONS IN MILLIMETERS UNLESS OTHERWISE NOTED.

THE REGIONAL MUNICIPALITY OF HALTON
PLANNING AND PUBLIC WORKS DEPARTMENT

Date MAY 2006 Rev. 2 NTS

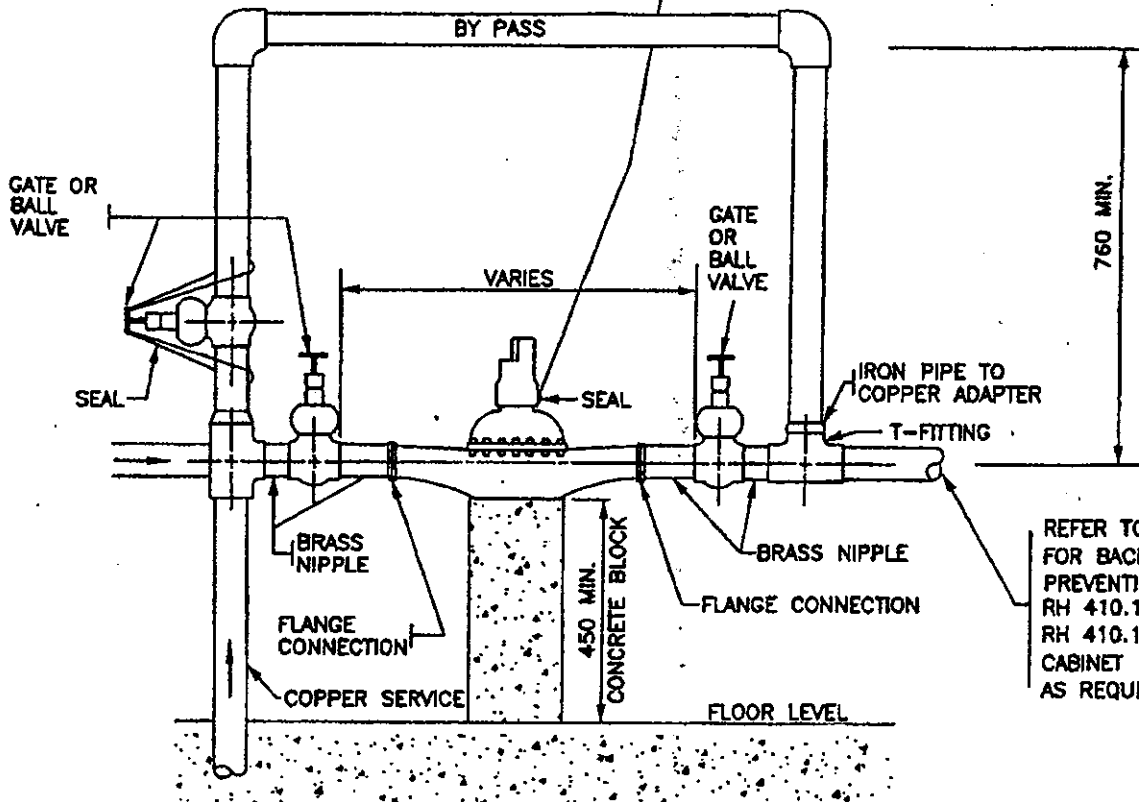
**STANDARD 25mm WATER
METER INSTALLATION**

APPROVED

DIRECTOR, ENGINEERING SERVICES
REGION STANDARD RH 410.03

METER LAY LENGTH _____

READ DISC TO BE INSTALLED ON HYDRO STACK OR INSIDE NEXT TO HYDRO METER AND SEALED.



MATERIALS	
SUPPLIED BY REGION	SUPPLIED BY OTHERS
40 mm WATER METER C/W TOUCH READ DISC AND COMPANION FLANGES	ALL PIPE FITTINGS REQUIRED FOR INSTALLATION AS PER REGIONAL DESIGN CRITERIA INCLUDING VALVES
READ DISC WIRE	
2--GASKETS, BOLTS AND NUTS	

NOTES:

1. ALL VALVES TO OPERATE CLOCKWISE TO CLOSE.
2. BY-PASS CAN BE MOUNTED VERTICALLY OR HORIZONTALLY.
3. PLUMBING TO BE DONE IN ACCORDANCE WITH ONTARIO BUILDING CODE BY CONTRACTOR/BUILDER.
4. CURB STOP/BOX MUST BE TO GRADE AND OPERATIONAL PRIOR TO OCCUPANCY.
5. WATER PRESSURE TO BE CONFIRMED BY CONTRACTOR OR BUILDING INSPECTOR.
6. CONCRETE BLOCK TO BE INSTALLED AFTER METER INSTALLATION.
7. METER INSTALLATION SHALL BE SCHEDULED BY APPOINTMENT PRIOR TO OCCUPANCY. CALL (905) 825-6000 OR 878-8113
8. WHERE THE STATIC PRESSURE EXCEEDS 550 kPa (80psi), A PRESSURE REDUCING VALVE SHALL BE INSTALLED AFTER THE METER AND BYPASS TO LIMIT THE MAX. STATIC PRESSURE TO NOT MORE THAN 550 kPa (80 PSI) IN AREAS THAT MAY BE OCCUPIED.
9. CONTRACTOR TO INSTALL TRT WIRE ON ALL COMMERCIAL/INDUSTRIAL INSTALLATIONS.
10. ALL DIMENSIONS IN MILLIMETERS UNLESS OTHERWISE NOTED.

THE REGIONAL MUNICIPALITY OF HALTON
PLANNING AND PUBLIC WORKS DEPARTMENT

Date MAY 2006 Rev. 2 NTS

**STANDARD 40mm WATER
METER INSTALLATION**

APPROVED

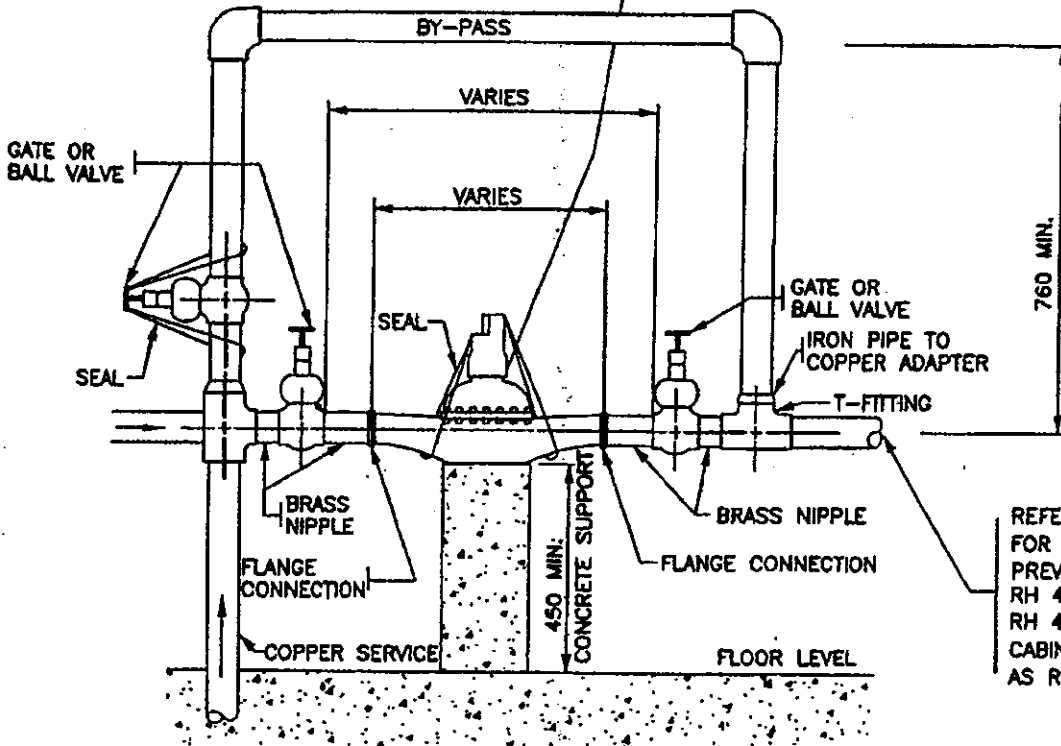
DIRECTOR, ENGINEERING SERVICES

REGION STANDARD RH 410.04

METER LAY LENGTH _____

READ DISC TO BE INSTALLED ON HYDRO STACK OR INSIDE NEXT TO HYDRO METER AND SEALED

MATERIALS	
SUPPLIED BY REGION	SUPPLIED BY OTHERS
1-50 mm WATER METER C/W TOUCH READ DISC AND COMPANION FLANGES READ DISC WIRE 2-GASKETS, BOLTS AND NUTS	ALL PIPE FITTINGS REQUIRED FOR INSTALLATION AS PER REGIONAL DESIGN CRITERIA INCLUDING VALVES



REFER TO RH 410.12 FOR BACKFLOW PREVENTION AND RH 410.15 AND RH 410.16 FOR METER CABINET INSTALLATION AS REQUIRED.

NOTES:

1. ALL VALVES TO OPERATE CLOCKWISE TO CLOSE.
2. BY-PASS CAN BE MOUNTED VERTICALLY OR HORIZONTALLY.
3. PLUMBING TO BE DONE IN ACCORDANCE WITH ONTARIO BUILDING CODE BY CONTRACTOR/BUILDER.
4. CURB STOP/BOX MUST BE TO GRADE AND OPERATIONAL PRIOR TO OCCUPANCY.
5. WATER PRESSURE TO BE CONFIRMED BY CONTRACTOR OR BUILDING INSPECTOR.
6. METER INSTALLATION SHALL BE SCHEDULED BY APPOINTMENT PRIOR TO OCCUPANCY. CALL (905) 825-8000 OR 878-8113
7. WHERE THE STATIC PRESSURE EXCEEDS 550kPa (80psi), A PRESSURE REDUCING VALVE SHALL BE INSTALLED AFTER THE METER AND BYPASS TO LIMIT THE MAX. STATIC PRESSURE TO NOT MORE THAN 550kPa (80psi) IN AREAS THAT MAY BE OCCUPIED.
8. CONTRACTOR TO INSTALL TRT WIRE ON ALL COMMERCIAL/INDUSTRIAL INSTALLATIONS.
9. METER LAY LENGTH TO BE DETERMINED BY REGION OF HALTON AT TIME OF INSTALLATION.
10. ALL DIMENSIONS IN MILLIMETERS UNLESS OTHERWISE NOTED.

THE REGIONAL MUNICIPALITY OF HALTON
PLANNING AND PUBLIC WORKS DEPARTMENT

Date MAY 2006 Rev. 2 NTS

APPROVED

**STANDARD 50mm WATER
METER INSTALLATION**

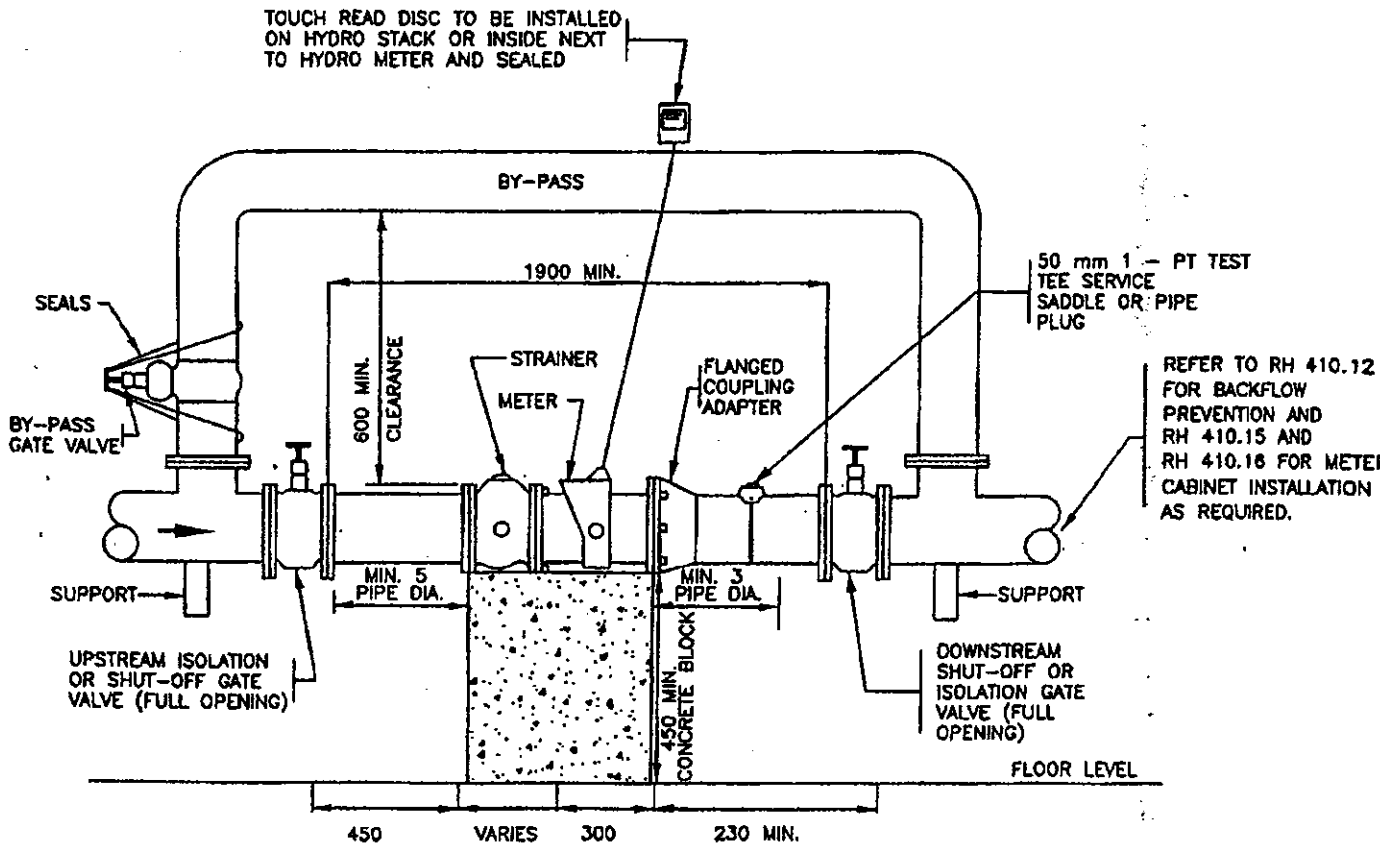
DIRECTOR, ENGINEERING SERVICES

REGION STANDARD RH 410.05

MATERIALS

SUPPLIED BY REGION	SUPPLIED & INSTALLED BY OTHERS
75 mm TURBINE METER C/W TOUCH READ DISC 75 mm STRAINER COMPANION FLANGES	ALL PIPE FITTINGS REQUIRED FOR INSTALLATION AS PER REGIONAL DESIGN CRITERIA INCLUDING VALVES
BOLTS & NUTS GASKETS READ DISC WIRE	

METER LAY LENGTH _____



NOTES:

- ALL VALVES TO OPERATE CLOCKWISE TO CLOSE.
- BY-PASS CAN BE MOUNTED VERTICALLY OR HORIZONTALLY.
- PLUMBING TO BE DONE IN ACCORDANCE WITH ONTARIO BUILDING CODE BY CONTRACTOR/BUILDER.
- CURB STOP/BOX MUST BE TO GRADE AND OPERATIONAL PRIOR TO OCCUPANCY.
- WATER PRESSURE TO BE CONFIRMED BY CONTRACTOR OR BUILDING INSPECTOR.
- METER INSTALLATION SHALL BE SCHEDULED BY APPOINTMENT PRIOR TO OCCUPANCY. CALL (905) 825-6000 OR 878-8113
- WHERE THE STATIC PRESSURE EXCEEDS 550kPa (80psi), A PRESSURE REDUCING VALVE SHALL BE INSTALLED AFTER THE METER AND BYPASS TO LIMIT THE MAX. STATIC PRESSURE TO NOT MORE THAN 550kPa (80psi) IN AREAS THAT MAY BE OCCUPIED.
- CONTRACTOR TO INSTALL TRT WIRE ON ALL COMMERCIAL/INDUSTRIAL INSTALLATIONS.
- METER LAY LENGTH TO BE DETERMINED BY REGION OF HALTON AT TIME OF INSTALLATION.
- PROVISIONS ARE TO BE MADE FOR DISPOSAL OF WATER USED FOR IN-PLACE TESTING EITHER THROUGH THE FLOOR DRAIN OR 125 mm FERRULE THROUGH THE WALL.
- ALL DIMENSIONS IN MILLIMETERS UNLESS OTHERWISE NOTED.

THE REGIONAL MUNICIPALITY OF HALTON
 PLANNING AND PUBLIC WORKS DEPARTMENT

**STANDARD 75mm
 TURBINE METER INSTALLATION**

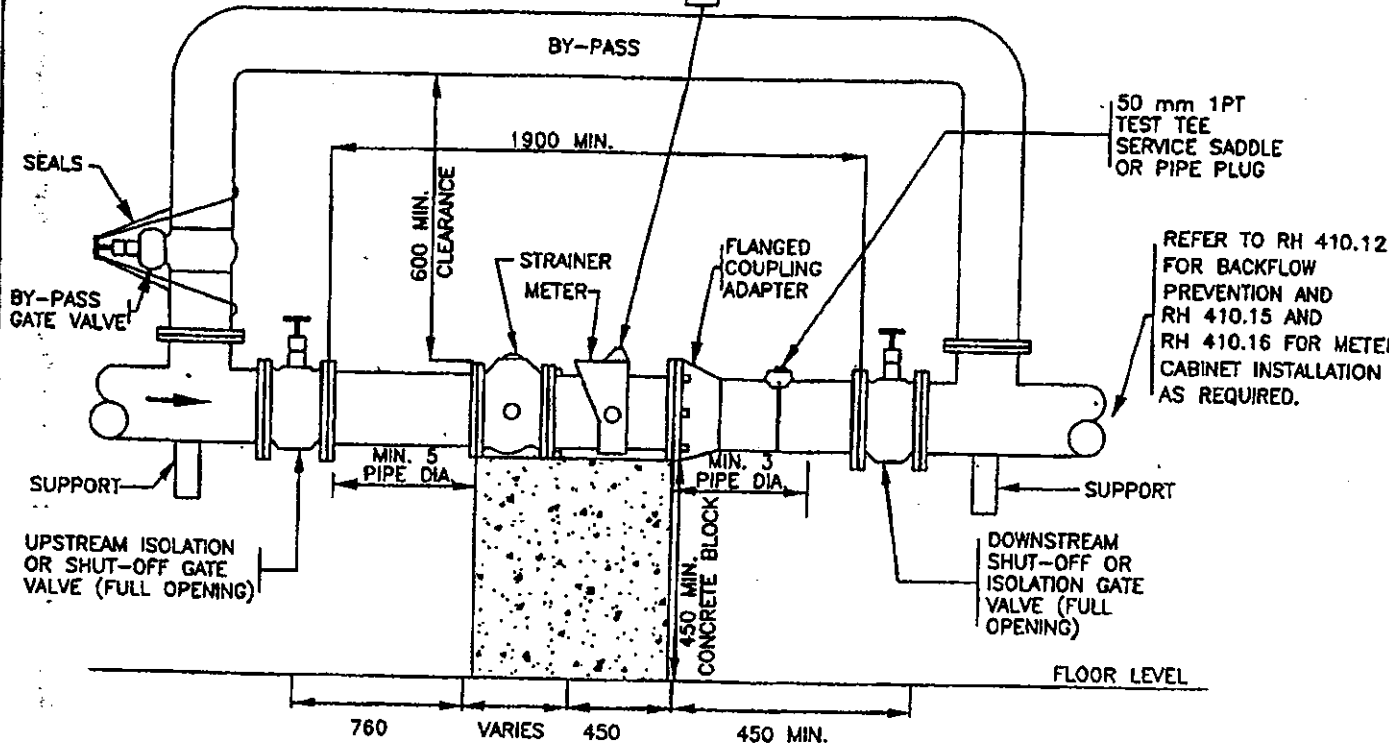
Date MAY 2006	Rev. 2	NTS
APPROVED		
_____ DIRECTOR, ENGINEERING SERVICES		
REGION STANDARD	RH 410.06	

MATERIALS

SUPPLIED BY REGION	SUPPLIED & INSTALLED BY OTHERS
100 mm TURBINE METER C/W TOUCH READ DISC	ALL PIPE FITTINGS REQUIRED FOR INSTALLATION AS PER REGIONAL DESIGN CRITERIA INCLUDING VALVES
100 mm STRAINER	
COMPANION FLANGES	
3 GASKETS	
BOLTS	
READ DISC WIRE	

METER LAY LENGTH _____

TOUCH READ DISC TO BE
INSTALLED ON HYDRO STACK
OR INSIDE NEXT TO HYDRO
METER AND SEALED.



REFER TO RH 410.12
FOR BACKFLOW
PREVENTION AND
RH 410.15 AND
RH 410.16 FOR METER
CABINET INSTALLATION
AS REQUIRED.

NOTES:

1. ALL VALVES TO OPERATE CLOCKWISE TO CLOSE.
2. BY-PASS CAN BE MOUNTED VERTICALLY OR HORIZONTALLY.
3. PLUMBING TO BE DONE IN ACCORDANCE WITH ONTARIO BUILDING CODE BY CONTRACTOR/BUILDER.
4. CURB STOP/BOX MUST BE TO GRADE AND OPERATIONAL PRIOR TO OCCUPANCY.
5. WATER PRESSURE TO BE CONFIRMED BY CONTRACTOR OR BUILDING INSPECTOR.
6. METER INSTALLATION SHALL BE SCHEDULED BY APPOINTMENT PRIOR TO OCCUPANCY. CALL (905) 825-8000 OR 878-8113
7. WHERE THE STATIC PRESSURE EXCEEDS 550kPa (80psi), A PRESSURE REDUCING VALVE SHALL BE INSTALLED AFTER THE METER AND BYPASS TO LIMIT THE MAX. STATIC PRESSURE TO NOT MORE THAN 550kPa (80psi) IN AREAS THAT MAY BE OCCUPIED.
8. CONTRACTOR TO INSTALL TRT WIRE ON ALL COMMERCIAL/INDUSTRIAL INSTALLATIONS.
9. METER LAY LENGTH TO BE DETERMINED BY REGION OF HALTON AT TIME OF INSTALLATION.
10. PROVISIONS ARE TO BE MADE FOR DISPOSAL OF WATER USED FOR IN-PLACE TESTING EITHER THROUGH THE FLOOR DRAIN OR 125mm FERRULE THROUGH WALL
11. ALL DIMENSIONS IN MILLIMETERS UNLESS OTHERWISE NOTED.

THE REGIONAL MUNICIPALITY OF HALTON
PLANNING AND PUBLIC WORKS DEPARTMENT

Date MAY 2006

Rev. 2 NTS

APPROVED

**STANDARD 100mm
TURBINE METER INSTALLATION**

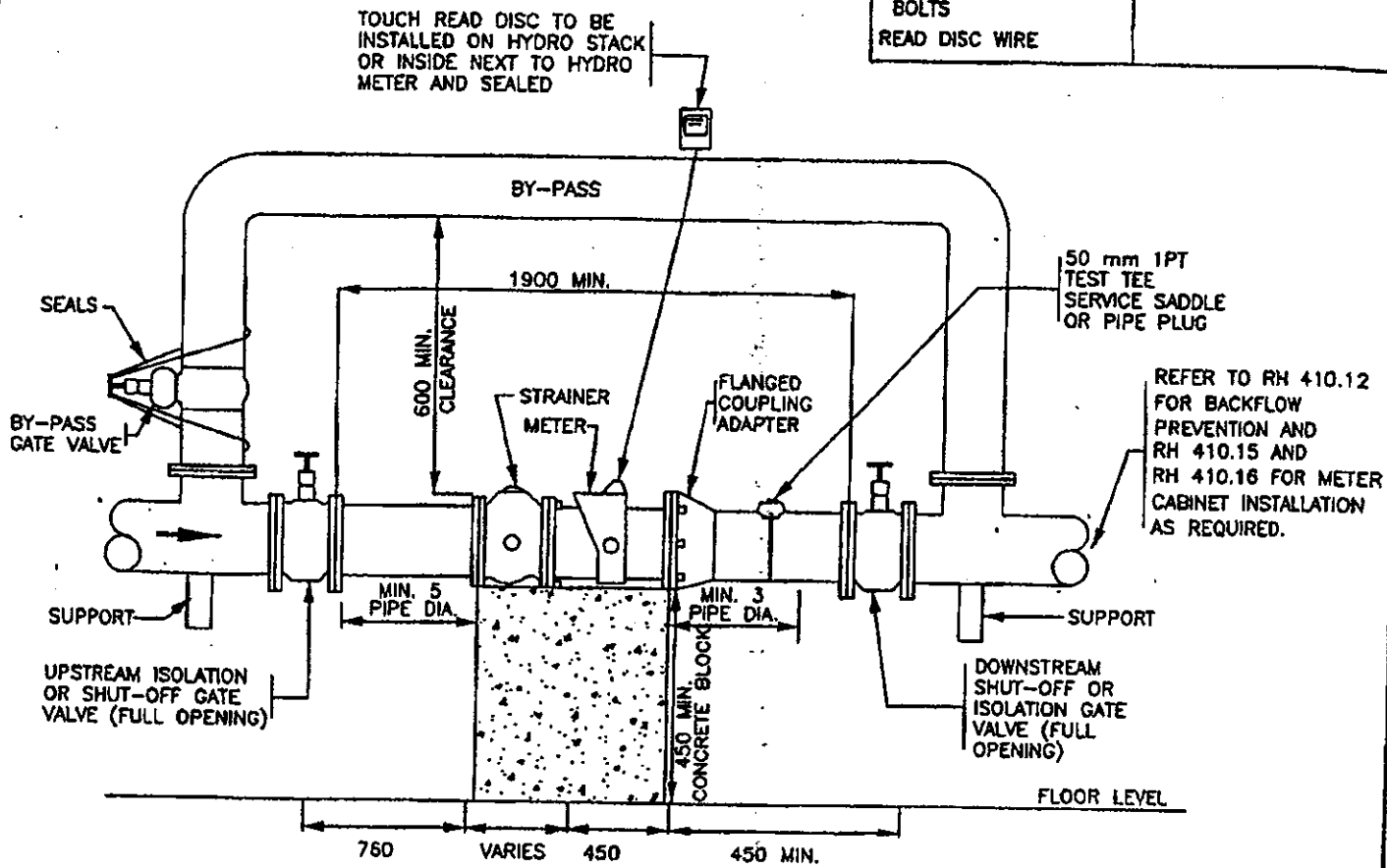
DIRECTOR, ENGINEERING SERVICES

REGION STANDARD

RH 410.07

METER LAY LENGTH _____

MATERIALS	
SUPPLIED BY REGION	SUPPLIED & INSTALLED BY OTHERS
150 mm TURBINE METER C/W TOUCH READ DISC	ALL PIPE FITTINGS REQUIRED FOR INSTALLATION AS PER REGIONAL DESIGN CRITERIA INCLUDING VALVES
150 mm STRAINER	
COMPANION FLANGES	
3 GASKETS	
BOLTS	
READ DISC WIRE	



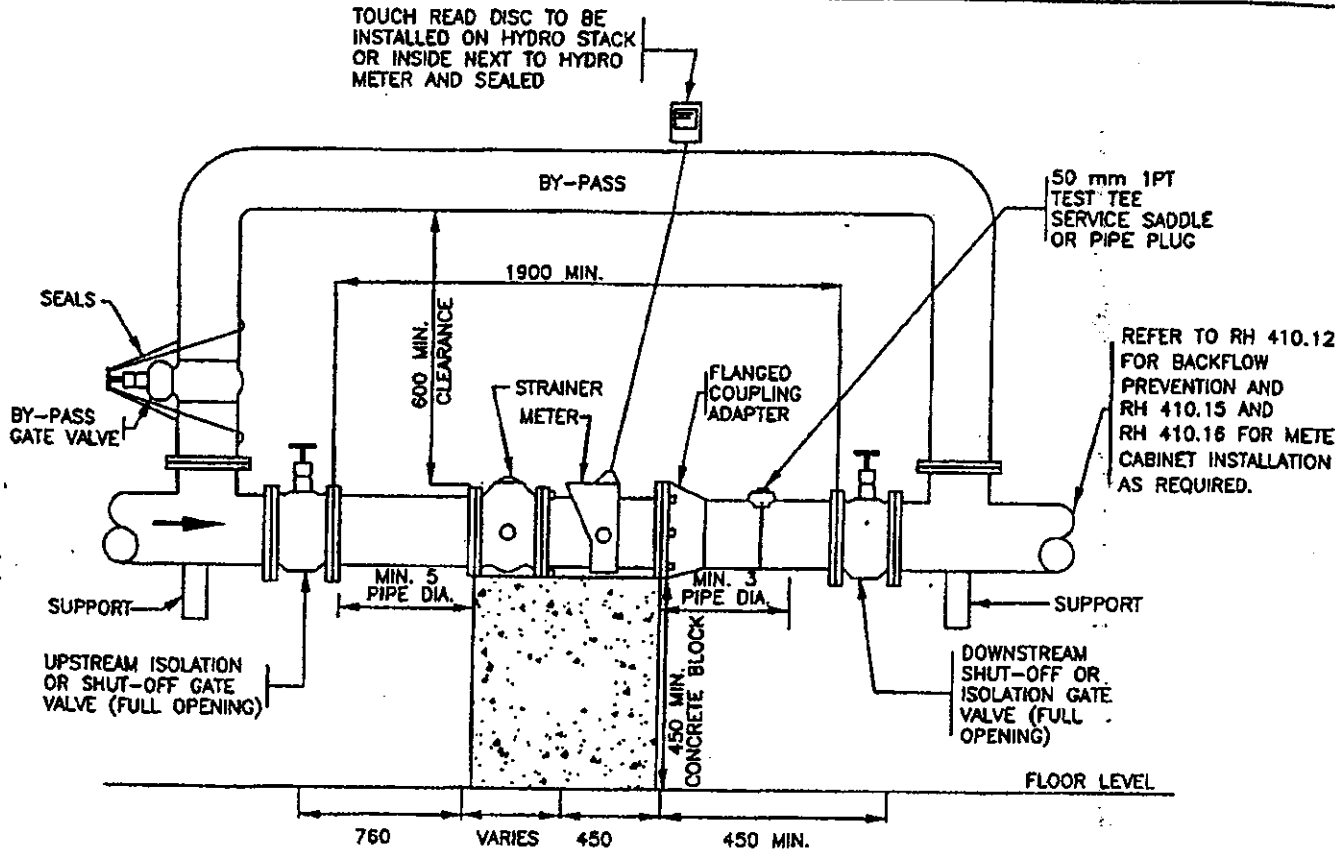
NOTES:

1. ALL VALVES TO OPERATE CLOCKWISE TO CLOSE.
2. BY-PASS CAN BE MOUNTED VERTICALLY OR HORIZONTALLY.
3. PLUMBING TO BE DONE IN ACCORDANCE WITH ONTARIO BUILDING CODE BY CONTRACTOR/BUILDER.
4. CURB STOP/BOX MUST BE TO GRADE AND OPERATIONAL PRIOR TO OCCUPANCY.
5. WATER PRESSURE TO BE CONFIRMED BY CONTRACTOR OR BUILDING INSPECTOR.
6. METER INSTALLATION SHALL BE SCHEDULED BY APPOINTMENT PRIOR TO OCCUPANCY. CALL (905) 825-8000 OR 878-8113.
7. WHERE THE STATIC PRESSURE EXCEEDS 550kPa (80psi), A PRESSURE REDUCING VALVE SHALL BE INSTALLED AFTER THE METER AND BYPASS TO LIMIT THE MAX. STATIC PRESSURE TO NOT MORE THAN 550kPa (80psi) IN AREAS THAT MAY BE OCCUPIED.
8. CONTRACTOR TO INSTALL TRT WIRE ON ALL COMMERCIAL/INDUSTRIAL INSTALLATIONS.
9. PROVISIONS ARE TO BE MADE FOR DISPOSAL OF WATER USED FOR IN-PLACE TESTING EITHER THROUGH THE FLOOR DRAIN OR 125 mm FERRULE THROUGH WALL.
10. ALL DIMENSIONS IN MILLIMETERS UNLESS OTHERWISE NOTED.

<p>THE REGIONAL MUNICIPALITY OF HALTON PLANNING AND PUBLIC WORKS DEPARTMENT</p> <p>STANDARD 150mm TURBINE METER INSTALLATION</p>	Date MAY 2006	Rev. 2	NTS
	<p>APPROVED</p> <p>_____ DIRECTOR, ENGINEERING SERVICES</p>		
REGION STANDARD		RH 410.08	

METER LAY LENGTH _____

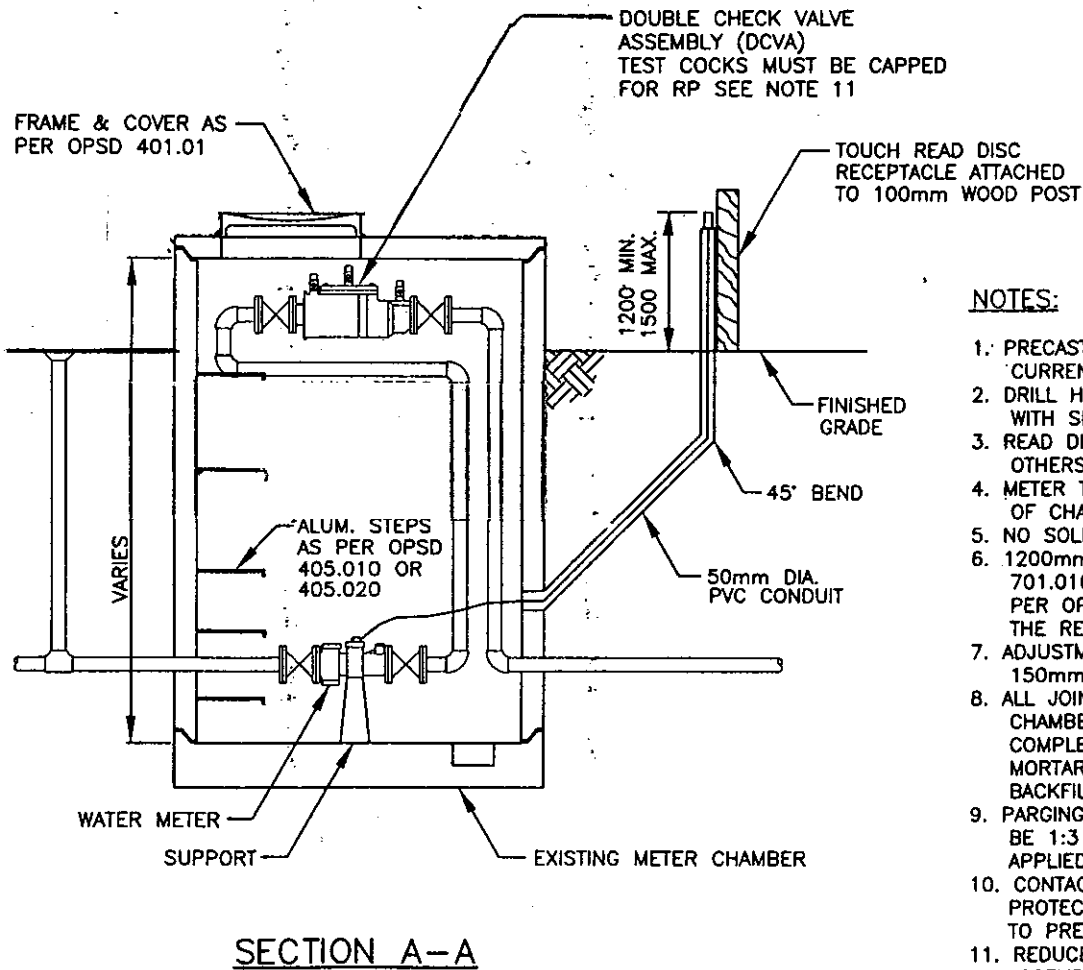
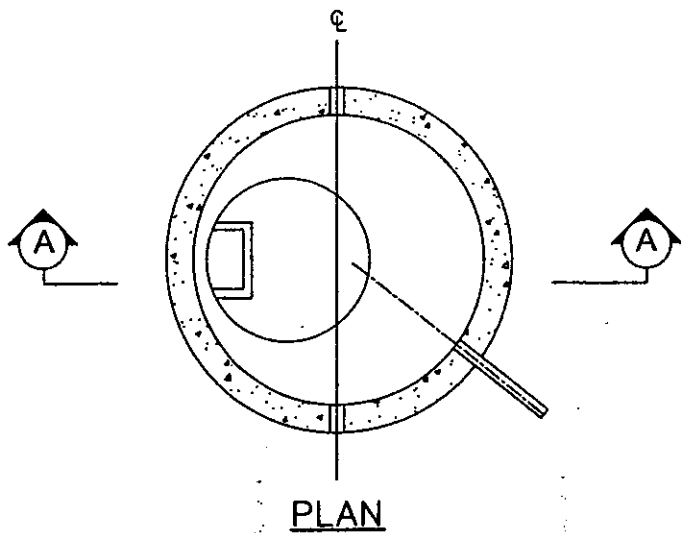
MATERIALS	
SUPPLIED BY REGION	SUPPLIED & INSTALLED BY OTHERS
200 mm TURBINE METER C/W TOUCH READ DISC	ALL PIPE FITTINGS REQUIRED FOR INSTALLATION AS PER REGIONAL DESIGN CRITERIA INCLUDING VALVES
200 mm STRAINER	
COMPANION FLANGES	
3 GASKETS	
BOLTS	
READ DISC WIRE	



NOTES:

1. ALL VALVES TO OPERATE CLOCKWISE TO CLOSE.
2. BY-PASS CAN BE MOUNTED VERTICALLY OR HORIZONTALLY.
3. PLUMBING TO BE DONE IN ACCORDANCE WITH ONTARIO BUILDING CODE BY CONTRACTOR/BUILDER.
4. CURB STOP/BOX MUST BE TO GRADE AND OPERATIONAL PRIOR TO OCCUPANCY.
5. WATER PRESSURE TO BE CONFIRMED BY CONTRACTOR OR BUILDING INSPECTOR.
6. METER INSTALLATION SHALL BE SCHEDULED BY APPOINTMENT PRIOR TO OCCUPANCY. CALL (905) 825-6000 OR 878-8113
7. WHERE THE STATIC PRESSURE EXCEEDS 550kPa (80psi), A PRESSURE REDUCING VALVE SHALL BE INSTALLED AFTER THE METER AND BYPASS TO LIMIT THE MAX. STATIC PRESSURE TO NOT MORE THAN 550kPa (80psi) IN AREAS THAT MAY BE OCCUPIED.
8. CONTRACTOR TO INSTALL TRT WIRE ON ALL COMMERCIAL/INDUSTRIAL INSTALLATIONS.
9. PROVISIONS ARE TO BE MADE FOR DISPOSAL OF WATER USED FOR IN-PLACE TESTING EITHER THROUGH THE FLOOR DRAIN OR 125 mm FERRULE THROUGH WALL.
10. ALL DIMENSIONS IN MILLIMETERS UNLESS OTHERWISE NOTED.

<p>THE REGIONAL MUNICIPALITY OF HALTON PLANNING AND PUBLIC WORKS DEPARTMENT</p> <p>STANDARD 200mm TURBINE METER INSTALLATION</p>	Date MAY 2006	Rev. 2	NTS
	APPROVED		
	DIRECTOR, ENGINEERING SERVICES		
	REGION STANDARD	RH 410.09	



NOTES:

1. PRECAST MANHOLE TO CONFORM TO CURRENT OPS.
2. DRILL HOLE FOR CONDUIT AND SEAL WITH SILICONE SEALANT.
3. READ DISC WIRE TO BE STRUNG BY OTHERS.
4. METER TO BE INSTALLED IN CENTRE OF CHAMBER.
5. NO SOLDERED JOINTS BEFORE METER.
6. 1200mm DIA. MANHOLE AS PER OPSD 701.010, 1800mm DIA. MANHOLE AS PER OPSD 701.012 AS REVISED BY THE REGION OF HALTON.
7. ADJUSTMENT UNITS ARE TO BE MIN. 150mm TO MAX. 300mm.
8. ALL JOINTS AND LIFTING HOLES IN CHAMBER SECTIONS TO BE COMPLETELY FILLED WITH 1:3 MORTAR MIX AND POINTED BEFORE BACKFILLING.
9. PARGING ON ALL BRICKWORK IS TO BE 1:3 MORTAR MIX AND IS TO BE APPLIED 15mm THICK.
10. CONTACTOR/BUILDER IS TO PROVIDE PROTECTION FOR REMOTE READOUT TO PREVENT VANDALISM.
11. REDUCED PRESSURE PRINCIPLE ASSEMBLY (RP) MUST BE INSTALLED IN AN ABOVE GROUND ENCLOSURE. REFER TO 410.15 AND 410.16 FOR INSTALLATION CRITERIA.
12. ALL DIMENSIONS ARE IN MILLIMETRES UNLESS OTHERWISE NOTED.

THE REGIONAL MUNICIPALITY OF HALTON
PLANNING AND PUBLIC WORKS DEPARTMENT

**METER CHAMBER WITH
BACKFLOW PREVENTER
(EXISTING METER CHAMBER)**

Date JUNE 2006

Rev. 2 NTS

APPROVED

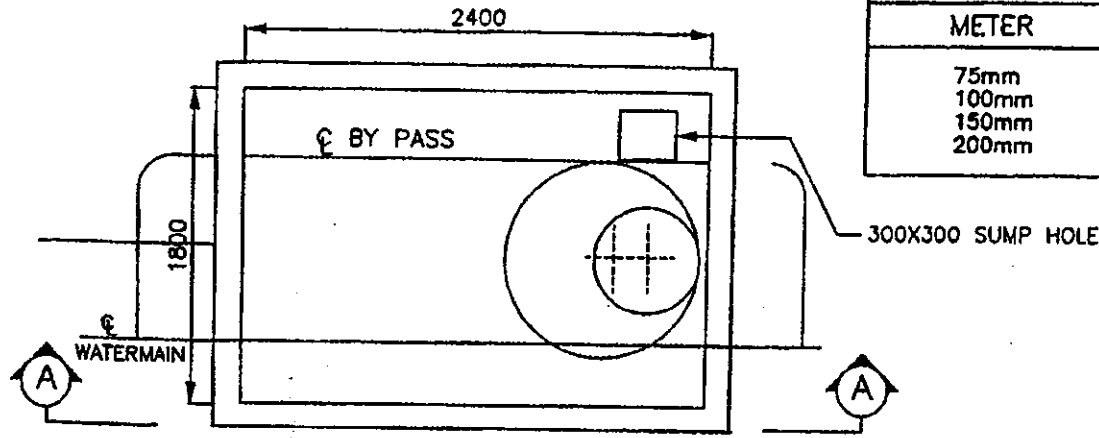
DRAFT

DIRECTOR, ENGINEERING SERVICES

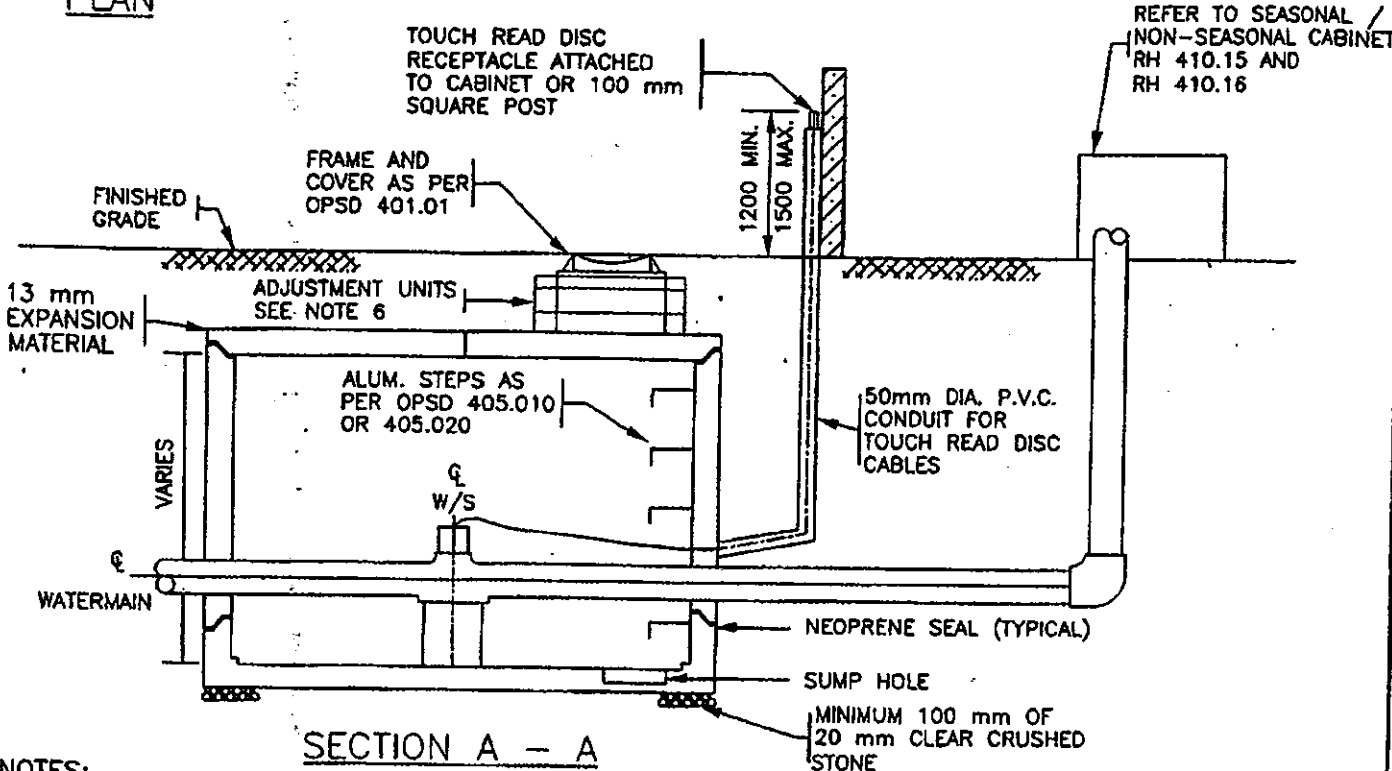
REGION STANDARD

RH

METER SIZES ALLOWED IN 1800 X 2400mm CHAMBER	
METER	STANDARD
75mm	410.06
100mm	410.07
150mm	410.08
200mm	410.09



PLAN



SECTION A - A

NOTES:

1. PRECAST MANHOLE TO CONFORM TO CURRENT OPS.
2. NO SOLDERED JOINTS BEFORE METER
3. READ DISC WIRE TO BE STRUNG BY OTHERS.
4. METER TO BE INSTALLED IN CENTER OF CHAMBER
5. DRILL HOLE FOR CONDUIT AND SEAL WITH SILICONE SEALANT.
6. ADJUSTMENT UNITS ARE TO BE MIN. 150 mm TO MAX. 300 mm.
7. ALL JOINTS AND LIFTING HOLES IN CHAMBER SECTIONS TO BE COMPLETELY FILLED WITH 1:3 MORTAR MIX AND POINTED BEFORE BACKFILLING.
8. PARGING ON ALL BRICKWORK TO BE 1:3 MORTAR MIX AND BE APPLIED 15 mm THICK.
9. CONTRACTOR/BUILDER TO PROVIDE PROTECTION FOR TOUCH READ DISC TO PREVENT VANDALISM
10. ALL DIMENSIONS IN MILLIMETERS UNLESS OTHERWISE NOTED.

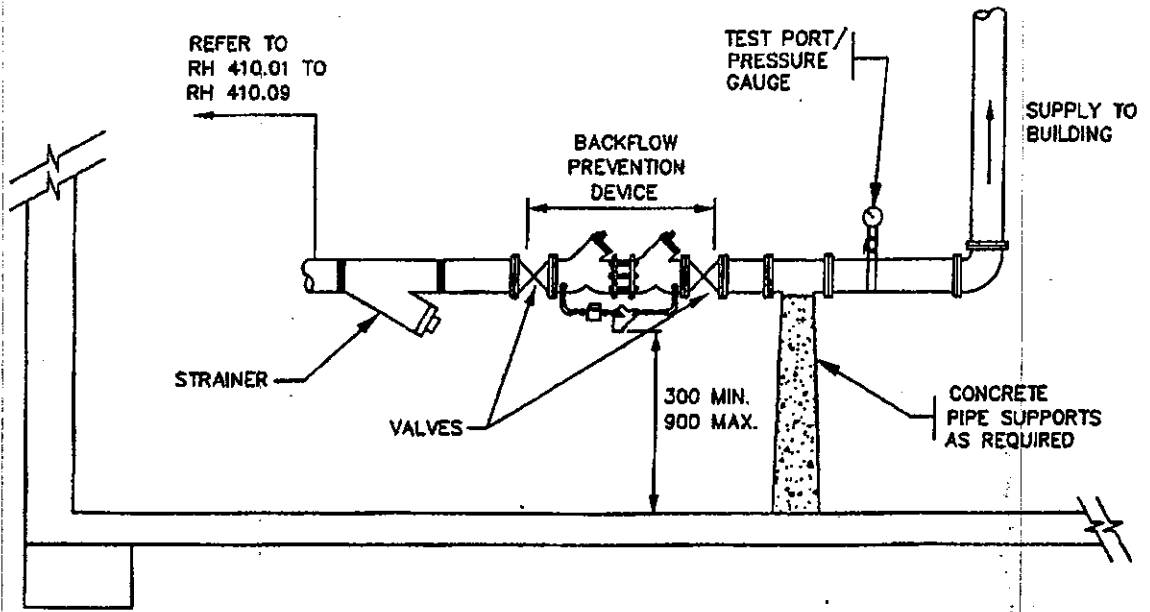
THE REGIONAL MUNICIPALITY OF HALTON
PLANNING AND PUBLIC WORKS DEPARTMENT

Date JUNE 2006 Rev. 1 NTS

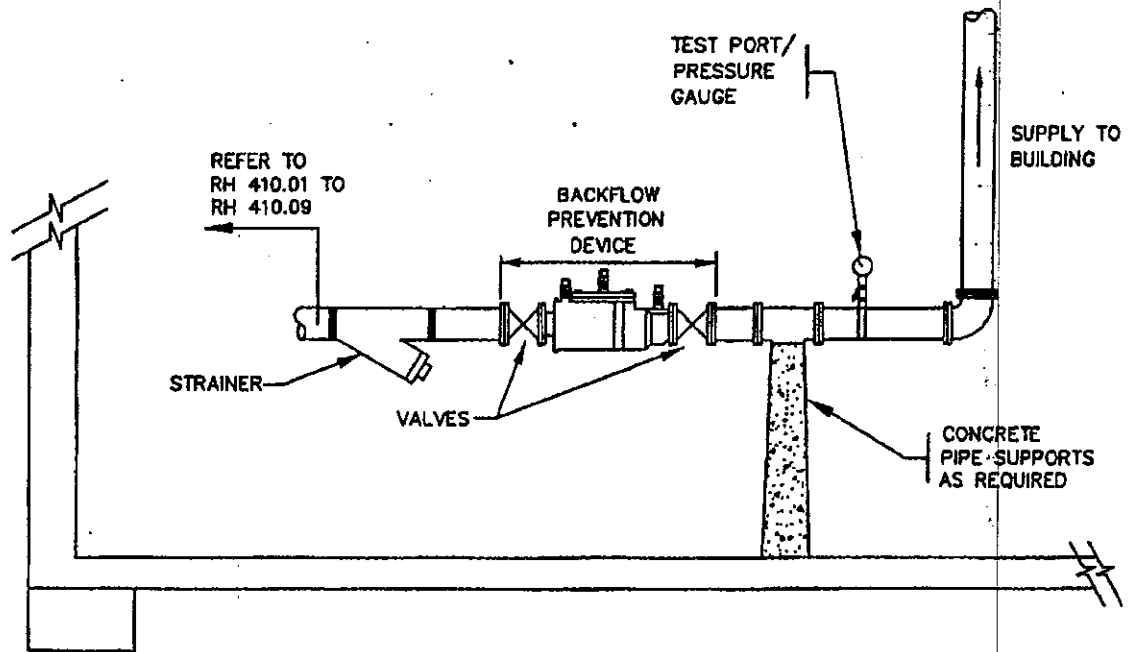
METER CHAMBER LAYOUT FOR
PRECAST 1800mm x 2400mm
MANHOLES

APPROVED

DIRECTOR, ENGINEERING SERVICES
REGION STANDARD RH 410.11



FOR HIGH HAZARD



FOR MEDIUM & LOW HAZARD

NOTES:

THE REGIONAL MUNICIPALITY OF HALTON
PLANNING AND PUBLIC WORKS DEPARTMENT

BACKFLOW PREVENTION DEVICE
(INDUSTRIAL, INSTITUTIONAL, COMMERCIAL)

Date MAY 2008

Rev.

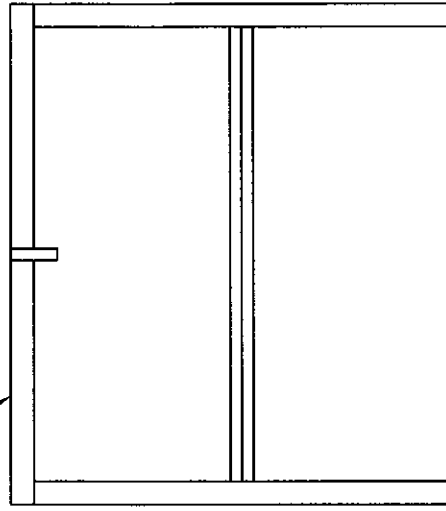
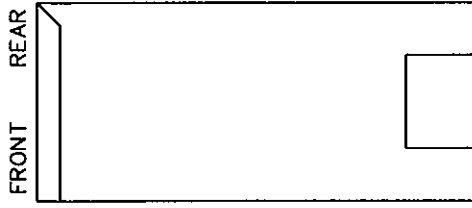
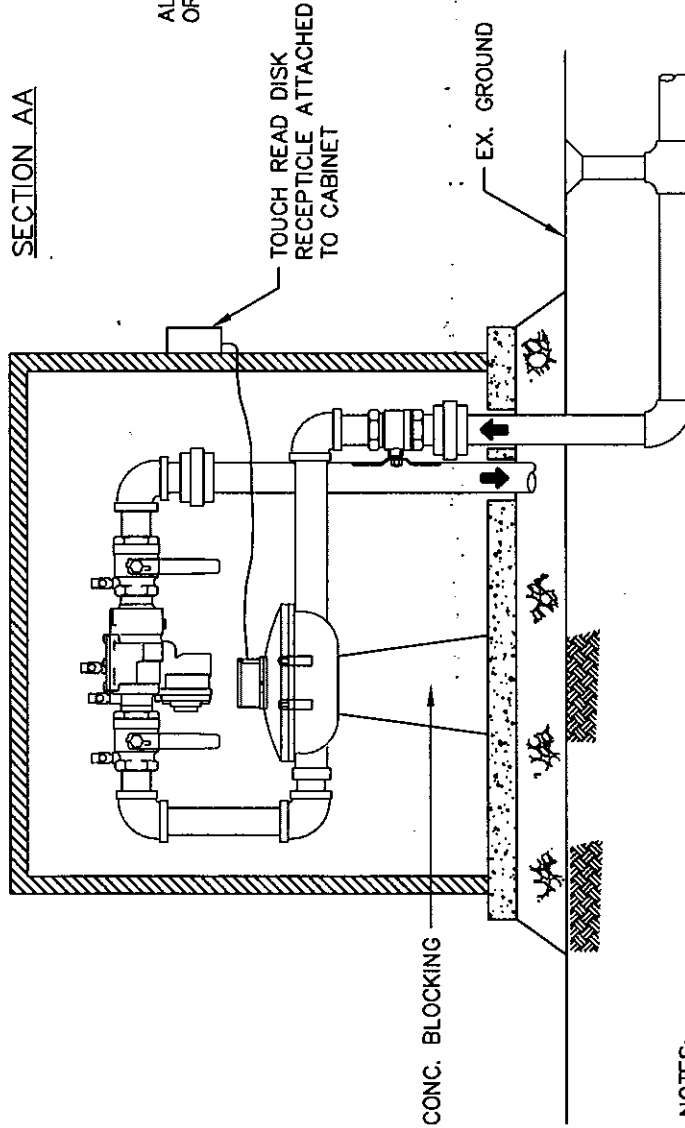
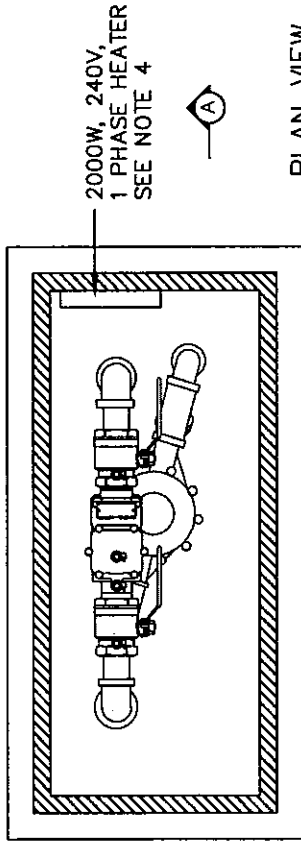
NTS

APPROVED

DIRECTOR, ENGINEERING SERVICES

REGION STANDARD

RH 410.12



NOTES:

1. LOCATION OF PAD MINIMUM 1.0m FROM PROPERTY LINE OR AS PER DRAWING.
2. USED FOR PARK IRRIGATION, SPLASH PADS, AND YARD HYDRANTS.
3. BACKFLOW ASSEMBLY IS TO BE INSTALLED BY A HALTON REGION REGISTERED BACKFLOW TESTER.
4. HEATER REQUIRED FOR ALL SEASON USE ONLY.
5. FOR SEASONAL USE, DRAIN AND COMPLETELY FLUSH SYSTEM IN THE FALL. HALTON REGION METER DEPARTMENT IS TO REMOVE METER FOR WINTER STORAGE.
6. SERVICE SIZE TO DETERMINE ENCLOSURE DIMENSIONS.
7. BYPASS NOT REQUIRED FOR ALL SYSTEMS, INCLUDING IRRIGATION.
8. ALL DIMENSIONS ARE IN MILLIMETRES UNLESS OTHERWISE NOTED.

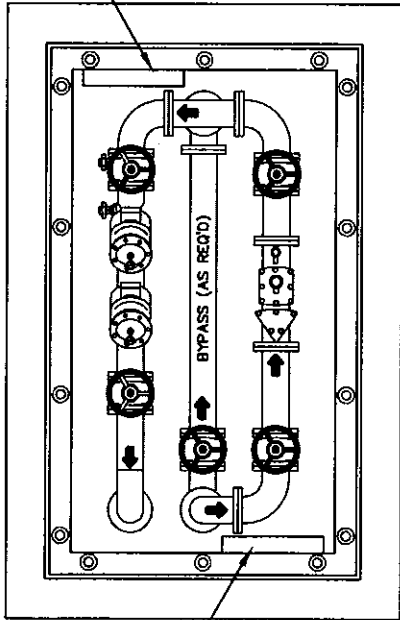
THE REGIONAL MUNICIPALITY OF HALTON
PLANNING AND PUBLIC WORKS DEPARTMENT

**METER CABINET &
BACKFLOW PREVENTER**
25mm - 50mm

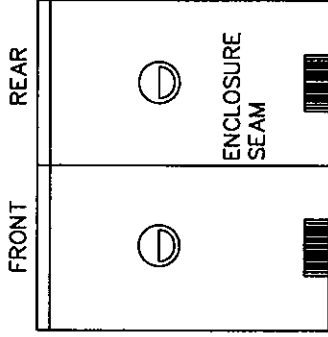
Date MAR. 2007
APPROVED

Rev. NTS

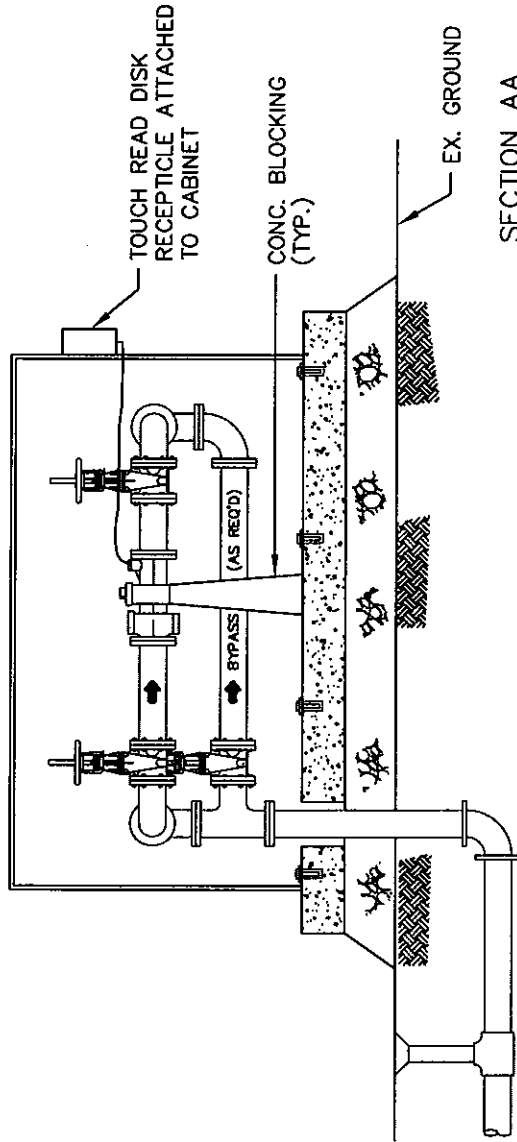
DIRECTOR, ENGINEERING SERVICES
REGION STANDARD RH 410.15



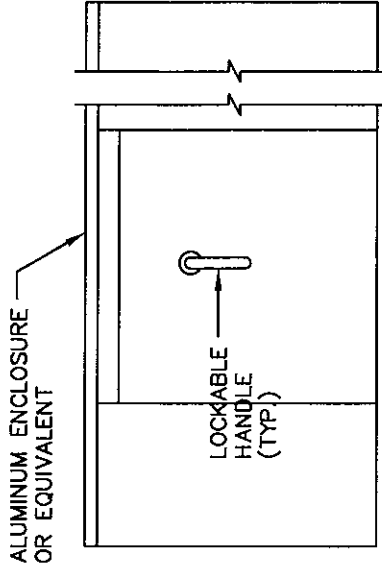
PLAN VIEW



SIDE ELEVATION



SECTION AA



FRONT ELEVATION

NOTES:

1. LOCATION OF PAD MINIMUM 1.0m FROM PROPERTY LINE OR AS PER DRAWING.
2. BACKFLOW ASSEMBLY IS TO BE INSTALLED BY A HALTON REGION REGISTERED BACKFLOW TESTER.
3. HEATER REQUIRED FOR ALL SEASON USE ONLY.
4. FOR SEASONAL USE, DRAIN AND COMPLETELY FLUSH SYSTEM IN THE FALL. HALTON REGION METER DEPARTMENT IS TO REMOVE METER FOR WINTER STORAGE.
5. SERVICE SIZE TO DETERMINE ENCLOSURE DIMENSIONS.
6. BYPASS NOT REQUIRED FOR ALL SYSTEMS, INCLUDING IRRIGATION.
7. ALL DIMENSIONS ARE IN MILLIMETRES UNLESS OTHERWISE NOTED.

THE REGIONAL MUNICIPALITY OF HALTON
PLANNING AND PUBLIC WORKS DEPARTMENT

METER CABINET &
BACKFLOW PREVENTER
75mm AND LARGER

Date MAR. 2007
APPROVED

NTS

DIRECTOR, ENGINEERING SERVICES
REGION STANDARD RH 410.16