



**Norval West Bypass Transportation
Corridor Improvements, Norval,
Ontario, Arborist Report**

November 26, 2025

Prepared for:
Regional Municipality of Halton
1151 Bronte Road,
Oakville ON L6M 3L1

Prepared by:

Stantec Consulting Ltd.
300 Hagey Boulevard
Waterloo, ON N2L 0A4
Tel.: (519) 579-4410
Fax: (519) 579-6733

165010598



Norval West Bypass Transportation Corridor Improvements, Norval, Ontario, Arborist Report

This document entitled Norval West Bypass, Norval, Ontario, Arborist Report was prepared by Stantec Consulting Ltd. ("Stantec") for the account of Regional Municipality of Halton (the "Client") to support the proposed construction of the Norval West Bypass Transportation Corridor Improvements (the "Project"). In connection thereto, this document may be reviewed and used by the provincial and municipal government agencies participating in the permitting process in the normal course of their duties. Except as set forth in the previous sentence, any reliance on this document by any third party for any other purpose is strictly prohibited. The material in it reflects Stantec's professional judgment in light of the scope, schedule and other limitations stated in the document and in the contract between Stantec and the Client. The opinions in the document are based on conditions and information existing at the time the document was published and do not take into account any subsequent changes. In preparing the document, Stantec did not verify information supplied to it by others. Any use which a third party makes of this document is the responsibility of such third party. Such third party agrees that Stantec shall not be responsible for costs or damages of any kind, if any, suffered by it or any other third party as a result of decisions made or actions taken based on this document.

Prepared by Heagle, Ted Digitally signed by Heagle, Ted
Date: 2025.12.01 21:38:29 -05'00'

(signature)

Ted Heagle, ISA, TRAQ, BHE
ISA Certified Arborist #ON-1740A
Phone: (647) 280-4593
ted.heagle@stantec.com

Reviewed by  Digitally signed by Black, Landon

(signature)

Landon Black, OALA, MPH
ISA Certified Arborist #ON-1876A
Phone: (519) 497-3188
landon.black@stantec.com



Table of Contents

Table of Contents i

1 Introduction..... 1.1

1.1 Site LOCATION 1.1

2 Methodology 2.1

2.1 Tree Condition Rating..... 2.1

3 Observation and Analysis..... 3.1

3.1 Site Observations 3.1

3.1.1 Endangered & Rare Species 3.2

3.2 Analysis 3.3

3.2.1 Trees Recommended for Preservation and Protection..... 3.3

3.2.2 Trees for Removal 3.3

3.2.3 Compensation 3.4

4 Construction Impact Mitigation and Management..... 4.1

4.1 Potential Construction Impacts to Trees 4.1

4.1.1 Soil Compaction and Root Damage 4.1

4.1.2 Mechanical Damage..... 4.1

4.1.3 Root Damage 4.2

4.2 Protecting and Managing Trees During Construction 4.2

5 Summary 5.1

List of Tables

Table 1: Observed Species 3.1

List of Figures

Figure 1: Site Location 1.2

List of Appendices

Appendix A: Tree Management Plan, Drawings L-900 to L-902

Appendix B: Table A, Detailed Tree Inventory, Table B, General Tree Inventory



1 Introduction

Stantec Consulting Ltd. (Stantec) was retained by the Region of Halton to undertake a Municipal Class Environmental Assessment (MCEA) for the Norval West Bypass Transportation Corridor Improvements, Highway 7 to 10 Side Road (Regional Road 10). The study is assessing the need for a new Norval West Bypass between Highway 7 and 10 Side Road, as well as improvements to 10 Side Road between Tenth Line and Adamson Street/Winston Churchill Boulevard (the Project). These improvements present an opportunity to streamline and facilitate a dominant travel route by re-orienting the roadway to support growth in Halton Hills and Halton Region. There are opportunities to provide better links to regional transit and active transportation connections, as well as between the communities and hamlets within the area.

1.1 Site Location

The Site is located on the south side of Guelph Street through a small, wooded area connecting to 10th Side Road and north to Adamson Street South and Winston Churchill Blvd. (refer to Figure 1).



**Norval West Bypass Transportation Corridor Improvements, Norval, Ontario,
Arborist Report
Introduction
November 26, 2025**

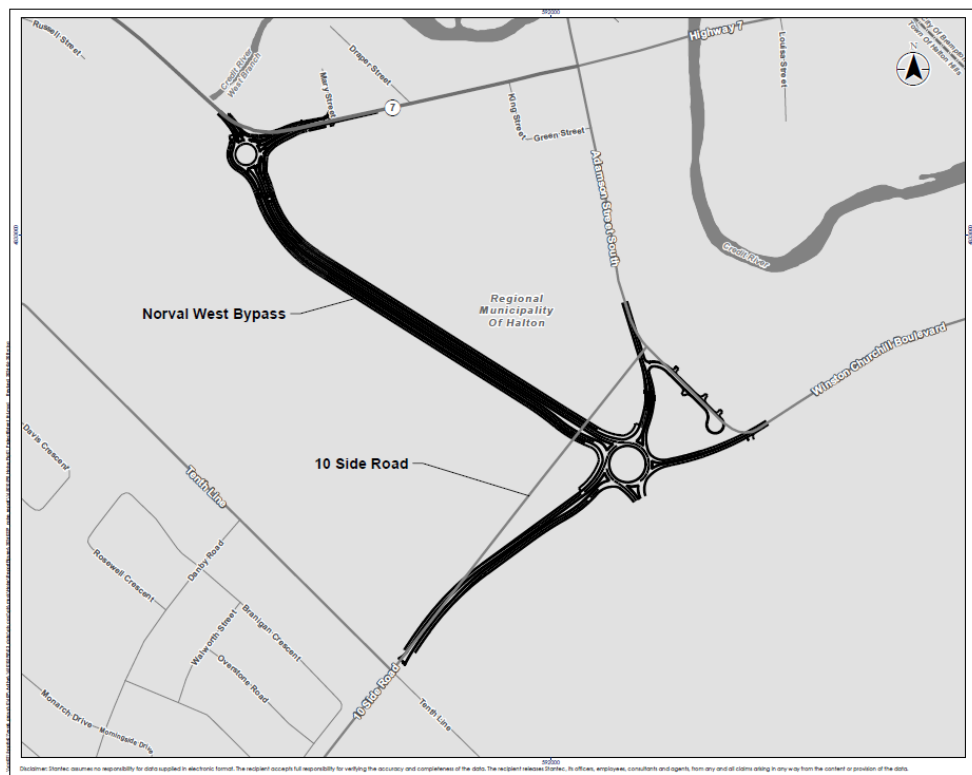


Figure 1: Site Location



2 Methodology

Ted Heagle, ISA Certified Arborist, completed a tree inventory and assessment of trees at the Site on May 21st, 22nd, 23rd, 24th and 28th, 2024. The inventory assessment included the trees located within the Site, and trees on adjacent lands that may be impacted by the development.

Trees 15 cm diameter at breast height (DBH) and greater located within the Site were tagged and recorded in a Detailed Tree Inventory (DTI). Large groupings or stands were recorded in a General Tree Inventory (GTI). The data collected for each tree includes tree genus, specific epithet (where possible to accurately determine), trunk integrity, crown structure, crown vigour, general health condition, DBH, and dripline radius. The tree locations were surveyed and recorded with a Trimble Catalyst GPS unit.

A Tree Management Plan (TMP), located in Appendix A, was prepared to identify the approximate existing tree locations, tree tag identification numbers, the adjusted dripline radius as well as the recommended action for each inventoried tree. The tree inventory data was compiled, and is available along with the recommended action, further justifications, and recommendations in Table A and B and is available in Appendix B.

2.1 Tree Condition Rating

The condition of inventoried trees was assessed using the following three categories:

Trunk Integrity (TI) - Assessment of the trunk for any defects;

Canopy Structure (CS) - Assessment of the scaffold branches and canopy of the tree;

Canopy Vigour (CV) - Assessment of the amount of deadwood versus live growth in the tree crown, also considers size, color and amount of foliage.



Norval West Bypass Transportation Corridor Improvements, Norval, Ontario,
Arborist Report
Methodology
November 26, 2025

Outlined below are the detailed guidelines utilized for the condition classification:

- Good:** Defects if present are minor (e.g. twig dieback, small wounds), defective tree part is small (e.g. 5-8 cm diameter limb) providing little if any risk.
- Fair:** Defects are numerous or significant (e.g. dead scaffold limbs), defective parts are moderate in size (e.g. limb greater than 5-8 cm in diameter).
- Poor:** Defects are severe (trunk cavity in excess of 50%), defective parts are large (e.g. majority of crown).
- Dead:** Tree exhibits no signs of life



3 Observation and Analysis

3.1 Site Observations

The Site was characterized as private lands south of Guelph Street to 10th Side Road and Right of Way (ROW) lands along Guelph Street, Adamson Street South, Winston Churchill Blvd, and 10th Side Road. The Site consists of a small, wooded area located south of Guelph Street connecting to a rural residential property. The Site contained both native and non-native species of naturalized and landscaped trees. A total of 610 trees were inventoried on Site through the DTI and a total of 8 vegetation units containing 182 stems was inventoried through GTI. The species listed in Table 1 were observed on Site.

Table 1: Observed Species

Family	Genus species (common name)
<i>Betulaceae</i> (Birch family)	<i>Carpinus betulus</i> (hornbeam)
<i>Cupressaceae</i> (Cypress family)	<i>Juniperus sp.</i> (juniper sp.) <i>Juniperus virginiana</i> (eastern red cedar) <i>Thuja occidentalis</i> (eastern white cedar)
<i>Juglandaceae</i> (Walnut family)	<i>Carya cordiformis</i> (bitternut hickory) <i>Carya ovata</i> (shagbark hickory) <i>Juglans cinerea</i> (Butternut) <i>Juglans nigra</i> (black walnut)
<i>Fabaceae</i> (Legume family)	<i>Robinia pseudoacacia</i> (black locust)
<i>Fagaceae</i> (Beech family)	<i>Fagus sylvatica</i> (European beech) <i>Quercus alba</i> (white oak) <i>Quercus macrocarpa</i> (bur oak)
<i>Malvaceae</i> (Mallow family)	<i>Tilia americana</i> (basswood)
<i>Oleaceae</i> (Olive family)	<i>Fraxinus pennsylvanica</i> (green ash) <i>Syringa vulgaris</i> (common lilac)



**Norval West Bypass Transportation Corridor Improvements, Norval, Ontario,
Arborist Report
Observation and Analysis
November 26, 2025**

Family	Genus species (common name)
<i>Pinaceae</i> (Pine family)	<i>Picea abies</i> (Norway spruce) <i>Picea glauca</i> (white spruce) <i>Picea pungens</i> (Colorado spruce) <i>Pinus nigra</i> (Austrian pine) <i>Pinus strobus</i> (eastern white pine) <i>Pinus sylvestris</i> (Scots pine)
<i>Rosaceae</i> (Rose family)	<i>Malus coronaria</i> (sweet crab apple) <i>Malus sp.</i> (apple sp.) <i>Prunus sp.</i> (cherry sp.)
<i>Rhamnaceae</i> (Buckthorn family)	<i>Rhamnus cathartica</i> (European buckthorn)
<i>Sapindaceae</i> (Soapberry family)	<i>Acer negundo</i> (Manitoba maple) <i>Acer platanoides</i> (Norway maple) <i>Acer saccharum</i> (sugar maple)
<i>Salicaceae</i> (Willow family)	<i>Salix sp.</i> (willow sp.)
<i>Ulmaceae</i> (Elm family)	<i>Ulmus pumila</i> (Siberian elm) <i>Ulmus sp.</i> (elm sp.)

3.1.1 Endangered & Rare Species

The Site was reviewed for endangered species including Butternut (*Juglans cinerea*). The BHA classified the 1 Butternut (Tree #2928 #B11 in the EIS Report) with a DBH of 26 cm as a Category 1, non-retainable tree. The tree is affected by Butternut Canker to such an advanced degree that retaining the tree would not support the protection or recovery of butternut. The butternut identified on Site does not pose a constraint to development. The results of the BHA are included in the EIS report.



3.2 Analysis

3.2.1 Trees Recommended for Preservation and Protection

There are 151 trees from the DTI and 169 stems from the GTI are recommended to be retained and protected with a Tree Protection Fence (TPF) during the construction of the Norval West Bypass.

- **Protect - Hoarding:** Two hundred and ninety-eight (298) trees will be preserved, and hoarding will be installed at the limits of construction, or the Tree Protection Zone (TPZ) with a Tree Protection Fence (TPF) as per details on drawing L-100. A total of 139 trees from the DTI and 166 stems within the GTI (vegetation units 2, 4, 6-8 and portions of vegetation units 1,3, 5) are within this preservation category.
- **Protect - Reduced TPZ:** Twelve (12) trees (#2844, #2845, #2935, #2998, #3063, #3142, #3207, #3208, #3294, #3304, #3325, #3383) from the DTI will be preserved but protection hoarding will be installed on one side that is reduced from the minimum standard.
- **Protect – No TPZ:** Three (3) stems from the GTI (vegetation unit 2) are located outside the proposed construction limits and no hoarding is required.

3.2.2 Trees for Removal

Four hundred and fifty (450) trees within the DTI and 13 stems within the GTI (portions of vegetation units 1, 3, 5) conflict with the proposed construction of the Norval West Bypass and will require removal.

There are 9 trees (#2918, #2920, #2923, #3221, #3230, #3376, #3398, #3403, #3404) within the Site that are dead and will require removal.



3.2.3 Compensation

Per the Region's Tree Canopy Replacement Policy, the woodland is to be compensated on a 2:1 ratio. A total of 874 trees are required as compensation for the removal of 437 trees within the woodland.



4 Construction Impact Mitigation and Management

4.1 Potential Construction Impacts to Trees

Trees are living organisms that react to changes in their environment. Trees can be damaged during construction without showing signs of damage until some years later. Most of the impacts relate to the removal of roots that results in the slow death of the tree as a result of its inability to absorb sufficient water and nutrients. Contained within this section are descriptions of the potential impacts this project may have on the trees, and impact mitigation methods that are intended to aid in the mitigation of impact during construction.

4.1.1 Soil Compaction and Root Damage

The leading cause of construction damage to trees is compaction of the soil around the roots or within the TPZ. The TPZ is the area around the tree or group of trees in which no grading or construction activity may occur. Equipment entering into a TPZ compresses the air pockets around the roots inhibiting the tree from absorbing nutrients and water. This damage ultimately degrades the health of the tree. Accordingly, during the removal stage, equipment use within the preservation zones should be restricted to ensure that the tree's roots are not disturbed, thereby assisting in maintaining their continued health. The TPZ is protected and delineated by the Tree Preservation Fencing.

4.1.2 Mechanical Damage

Equipment can physically damage the trees through striking the trunk, limbs and/or roots. Felled trees can also cause damage during the tree removal stage of construction. Some damage is unavoidable due to close proximity of adjacent trees; however, through the use of proper equipment and best management practices the damage can be minimized. The Contractor should be held responsible for all avoidable



damage to the trees during all stages of development. Note, trees shall always be felled away from adjacent trees to be retained.

4.1.3 Root Damage

The success of tree preservation is dependent not only on protecting the root zone from compaction and damage; it is also contingent upon the ability to ensure that the structural roots within the root plate are not disturbed. Impacts to this area may result in the structural failure of these trees. Excavating soil 1 m outside a tree's dripline, or within a dripline can damage roots by tearing and splitting back to the stem. This damage can later lead to rot that can kill the tree. All work within the dripline of an existing tree shall be approved by an Arborist. When excavating the top 30-60 cm of soil adjacent to trees, care must be taken. Excavation should cleanly sever the roots prior to stripping and removal of soil. Exposed roots with a diameter greater than 2.5 cm (1 inch) shall be pruned back to the soil face to prevent damage to the tree.

4.2 Protecting and Managing Trees During Construction

The following recommendations are presented to provide appropriate tree protection and management during the construction of this project.

1. Tree Preservation Hoarding shall be installed to protect trees identified for preservation. Tree Preservation Hoarding must be installed as per the detail identified on Drawing L-100. Upon installation of the Tree Preservation Hoarding, the Contractor shall contact the Environmental Inspector to review and approve the fencing and its location prior to commencement of any site work. This shall be coordinated with City staff for final approval (as required). The protection fencing shall remain intact throughout the entire project. Fence installation should be coordinated with the Regional Forester for final approval. The fencing will be inspected weekly, and if required, repaired. The fencing shall be removed at the completion of all site works.



**Norval West Bypass Transportation Corridor Improvements, Norval, Ontario,
Arborist Report
Construction Impact Mitigation and Management
November 26, 2025**

2. Upon receiving the necessary project approvals and prior to the commencement of tree removals, all trees designated for preservation must be flagged in the field. All designated preservation areas must be left standing and undamaged during site works. Removals are to be completed outside of migratory bird nesting season from April 1 to August 15. If removals occur within the restricted activity period, due diligence measures, including pre-clearing nest sweeps will be employed in order to reduce risk to nesting birds protected under the Migratory Birds Convention Act, 1994 and Migratory Birds Regulations. These surveys will be completed by a qualified biologist.
3. The TPZ is the area around a retained tree that is to be protected by Tree Preservation Hoarding. The TPZ is not to be used for any type of storage (e.g. storage of debris, construction material, surplus soils, and construction equipment). No trenching or tunneling for underground services shall be located within the TPZ. Construction equipment shall not be allowed to idle or exhaust within the TPZ.
4. Trees shall not have any rigging cables or hardware of any sort attached or wrapped around them, nor shall any contaminants be dumped within the protective areas. Further, no contaminants shall be dumped or flushed where they may come into contact with the feeder roots of the trees. In the event that roots from retained trees are exposed, or if it is necessary to remove limbs or portions of trees after construction has commenced, the Project Arborist shall be informed and the proper actions conforming to Town Policies and By-laws shall be carried out.
5. Upon completion of the tree removals, all felled trees are to be removed from the site. No lumber or brush from the clearing is to be stored onsite. Any chipping, cutting or brush clean-up is to be completed outside the bird nesting season. If these activities are to occur within the restricted activity period, due diligence measures, including pre-clearing nest sweeps will be employed in order to reduce risk to nesting birds protected under the Migratory Birds Convention Act, 1994 and



**Norval West Bypass Transportation Corridor Improvements, Norval, Ontario,
Arborist Report
Construction Impact Mitigation and Management
November 26, 2025**

Migratory Birds Regulations. These surveys will be completed by a qualified biologist.

6. The following is the process that shall be carried out if tree removals are requested during the restricted time indicated in the Migratory Birds Convention Act:
 - i. Contact a qualified individual (i.e. Ornithologist), to determine if nesting birds are within the tree removal disturbance area. Stantec has a qualified bird specialist on staff that can be contacted.
 - ii. If the bird specialist has determined that there are nesting birds on site, there will be no tree removals/chipping conducted within the boundary set out by the specialist. Tree removals can resume within this area at the end of the nesting season, August 31, or if the migratory bird specialist has determined that the nest is complete.
 - iii. If the bird specialist determines there are no migratory birds nesting within the disturbance area, the contractor has 2 days to conduct removals. At the end of 2 days if removals and chipping is not complete, the bird specialist will return to the site and proceed with another assessment. If there are still no birds work can resume for another 2 days. This process will continue until all removals and chipping is complete.
7. Due to the introduction of Oak Wilt in Ontario, pruning or wounding of Oaks is prohibited between April and November. Any pruning of Oak is to be completed from December to March.



5 Summary

Based on the preliminary design, there are approximately 151 trees from the Detailed Tree Inventory (DTI) and 169 stems from the General Tree Inventory (GTI) that are recommended to be retained and protected during the construction of the Norval West Bypass. This will be refined through detail design as the impacts of grading will be refined and minimized.

- **Protect - Hoarding:** 298 trees will be preserved, and hoarding will be installed at the limits of construction, or the Tree Protection Zone (TPZ) with a Tree Protection Fence (TPF). A total of 139 trees from the DTI and 166 stems within the GTI (vegetation units 2, 4, 6, 7 and portions of vegetation units 1, 3, 5) are within this preservation category.
- **Protect - Reduced TPZ:** 12 trees (#2844, #2845, #2935, #2988, #3063, #3142, #3207, #3208, #3294, #3304, #3325, #3383) from the DTI will be preserved but protection hoarding will be installed on one side that is reduced from the minimum standard.
- **Protect – No TPZ:** Three (3) stems from the GTI (vegetation unit 2) are located outside the proposed construction limits and no hoarding is required.

Based on the preliminary design, approximately 450 trees within the DTI and 13 stems within the GTI (portions of vegetation units 1, 3, 5) could be impacted by the proposed construction of the Norval West Bypass. There are 9 trees (#2918, #2920, #2923, #3221, #3230, #3376, #3398, #3403, #3404) within the site that are dead and would require removal. Further mitigation of grading limits, including tree removal, will be identified through detail design and achieved by grading and retaining walls (size of walls are subject to future geotechnical investigations). This strategy will overall reduce the number of trees impacted.



APPENDIX A:
Tree Management Plan,
Drawings L-900 to L-902



The Contractor shall verify and be responsible for all dimensions. DO NOT scale the drawing - any errors or omissions shall be reported to Stantec without delay.
The Copyrights to all designs and drawings are the property of Stantec. Reproduction or use for any purpose other than that authorized by Stantec is forbidden.

Key Map NTS.



Legend



REVISED PER UPDATED DESIGN		XL	TH	2025.11.17
ISSUED FOR REVIEW		JL	TH	2024.06.19
Revision/Issue		By	Appd	YYYY.MM.DD
File Name: 165010598_L-TM				2025.11.21
		Dwn.	Dsgn.	Chkd.
				YYYY.MM.DD

Permit-Seal 

Client/Project
Regional Municipality of Halton, ON

Norval West Bypass - Class EA

Halton Hills, ON

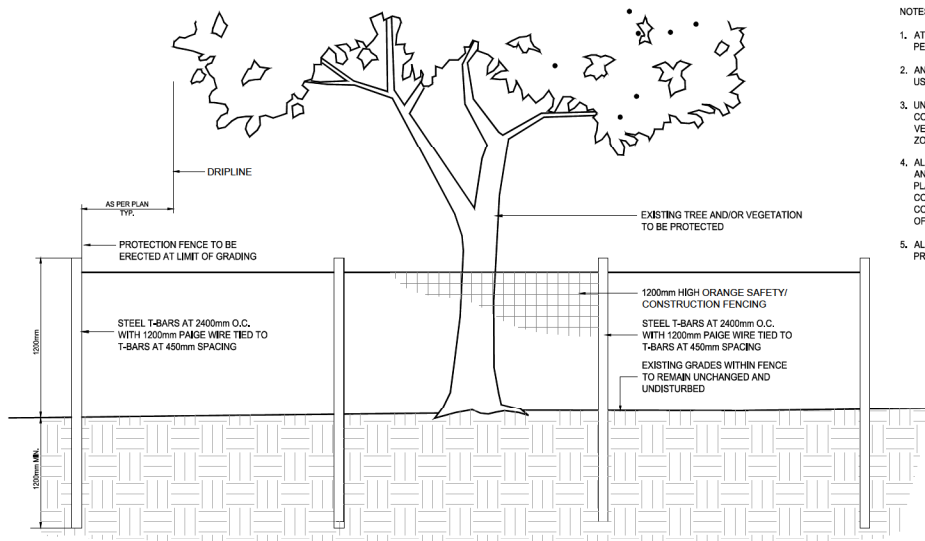
Title
Tree Management Plan
Overview Plan

Project No.
165010598

Revision	Sheet
0	1 of 3

Revision	Sheet	Drawing No.
0	1 of 3	L-900

Revision	Sheet	Drawing No.
0	1 of 3	L-900



NOTES:

1. ATTACHMENT OF FENCE TO TREES WILL NOT BE PERMITTED.
2. ANY EXPOSED ROOTS ARE TO BE HAND PRUNED USING PROPER ARBORICULTURAL PRACTICES.
3. UNDER NO CIRCUMSTANCES SHALL ANY CONSTRUCTION MATERIALS, EQUIPMENT OR VEHICLES BE PLACED WITHIN THE TREE PROTECTION ZONE.
4. ALL TREE PROTECTION TO BE ERRECTED PRIOR TO ANY CONSTRUCTION ACTIVITY AND IS TO REMAIN IN PLACE UNTIL ALL CONSTRUCTION HAS BEEN COMPLETED. OBTAIN WRITTEN APPROVAL FROM CONTRACT ADMINISTRATOR PRIOR TO REMOVAL OF FENCING.
5. ALL TREE PROTECTION FENCING SHALL BE REMOVED PRIOR TO PROJECT FINAL ACCEPTANCE.

GENERAL

1. The Tree Management/Preservation Plan is to be read in conjunction with the associated Arborist Report and shall not be utilized as a standalone document.

TREE PROTECTION FENCING

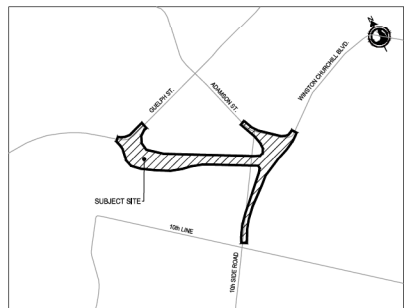
- The Contractor shall install Tree Protection Fencing (TPF) to protect trees identified for preservation.
- All TPF will conform with the Arborist Report and details included on these plans. Where current governing Municipal/City standards differ, contact Project Arborist or Contract Administrator for direction.
- No substitutions of materials, products or quantities will be accepted without the prior written permission of the Project Arborist.
- Upon installation of the TPF, the Contractor shall contact the Project Arborist to review and approve the fencing and location(s) in writing prior to commencement of any site work.
- The TPF shall remain in the approved locations throughout the duration of the site works and shall not be moved at any time to accommodate construction or site work.
- The Contractor shall inspect TPF weekly and maintain as required through all stages of development/construction. The TPF shall be removed at the completion of all site works and disturbed areas shall be restored to original condition.

TREE PRESERVATION

1. The Tree Protection Zone (TPZ) is protected and delineated by the TPZ or as otherwise defined in the approved Arborist Report. The Contractor is not to proceed in uncertainty.
2. Any potential or incurred injury/damage to adjacent trees identified to be preserved shall be immediately reported to the Project Arborist and reviewed on site. Injury/damage includes any required arboricultural treatment including but not limited to: limb pruning, trunk damage, root exposure or required cutting/removal or any other activity that has the potential to harm the tree.
3. The TPZ is not to be used for any type of storage including materials, equipment or stockpiles.
4. No trenching or tunneling for underground services shall occur within the TPZ.
5. Any equipment use within the TPZ will be restricted throughout all stages of development. This applies to TPZs within or outside of the project limit line.
6. Absolutely no alteration of grades or construction activity is permitted within the TPZ and TPZ. Absolutely no flushing of contaminant shall be permitted towards or within the TPZ.
7. When working adjacent to trees to be preserved site preparation measures such as pruning for overhead clearance may be required. Preparatory pruning shall only be performed when completed by or under the direct supervision of an ISA Certified Arborist (or approved qualified person as approved by the Project Arborist).
8. All pruning work shall be performed by a qualified individual and shall be in accordance with current horticultural practices including but not limited to:
 - a. Pruning cuts shall be made just beyond the branch collar and should be limited to thinning cuts. Heading cuts will only be accepted in specific cases as directed by an arborist and should be avoided where possible.
 - b. Pruning of all stems greater than 50 mm in diameter should be made with a three-cut method to avoid tearing living bark tissue.
 - c. No wound dressings shall be applied.
16. Where soil excavation/grading work is required within the rooting zone of a tree to be preserved (the rooting zone often extends beyond the identified TPZ and can be 3 times the drip line radius or more):
 - a. Roots shall be cleanly severed before stripping and removing soil to avoid damage to the tree and the root system. Roots to be cut using appropriate equipment (i.e., trencher adapted to this specific use/chainsaw/root pruning machine). Roots may be severed using the clean edge of a straight excavator bucket under supervision of an ISA Certified Arborist.
 - b. No attempts to cut existing roots with the digging bucket of any heavy machinery will be permitted as it can cause the roots to tear and pull and be harmful to root regeneration and recovery.
 - c. Any exposed roots of a tree to be preserved with a diameter less than 2.54 cm (1 inch) shall be pruned back to the soil face.
 - d. Excavation area within the TPZ shall be backfilled immediately and/or roots shall be kept constantly moist with burlap covered with white plastic and checked a minimum of 2 times a day, for a maximum of 48 hours. If roots are to be exposed for a period greater than 48 hours, the exposed area shall be covered with a minimum of 150 mm (6 inches) of mulch and maintained in a moist condition during construction until the area can be properly backfilled.
17. Trees shall not have any rigging cables, fencing, signage or hardware of any sort attached or wrapped around them.
18. No contaminants or toxic materials shall be dumped or flushed where they may come into contact with the feeder roots of trees to be preserved.
19. The Contractor will be held responsible for all avoidable damage to preserved trees during all stages of construction.
20. Watering or other maintenance of trees to be preserved may be required if construction activities are observed to be causing stress or impacting health as determined by the Project Arborist.

TREE REMOVALS

1. Prior to the commencement of tree removals, all trees designated for removal must be **clearly identified** in the field.
2. Where possible, removal, chipping, and/or brush removal is to be completed outside of migratory bird nesting season from April 1 to August 31. If removals are to occur within the restricted activity period, due diligence measures, including pre-clearing nest sweeps will be employed to reduce risk to nesting birds protected under the Migratory Birds Convention Act, 1994 and Migratory Birds Regulations. These surveys must be completed by a qualified biologist or ornithologist.
3. Trees shall **always** be felled away from adjacent preserved trees to prevent avoidable damage to the crowns and stems



Legend

- Existing Deciduous Tree
- Existing Coniferous Tree
- Tree to be Retained and Protected Identification Tag
- Tree to be Retained and Protected, Reduced TPZ
- Tree to be Removed Identification Tag
- Proposed Tree Protection Fencing
- Existing Vegetation Unit to be Retained and Protected
- Existing Vegetation Unit to be Removed
- Dead Standing Tree
- Bypass Area of Development
- Proposed Sidewalk/Median

REVISION PER UPDATED DESIGN	XL	TH	2025.11.17
ISSUED FOR REVIEW	JL	TH	2024.06.19
Revision/Issue	By	Appd	YYYY.MM.DD
File Name: 145010598_L1-TM	Dwn.	Dgn.	Chkd.
			2025.11.21
			YYYY.MM.DD

Permit-Seal



Client/Project
Regional Municipality of Halton, ON

Norval West Bypass - Class EA

Halton Hills, ON

Title
Tree Management Plan
Window 1

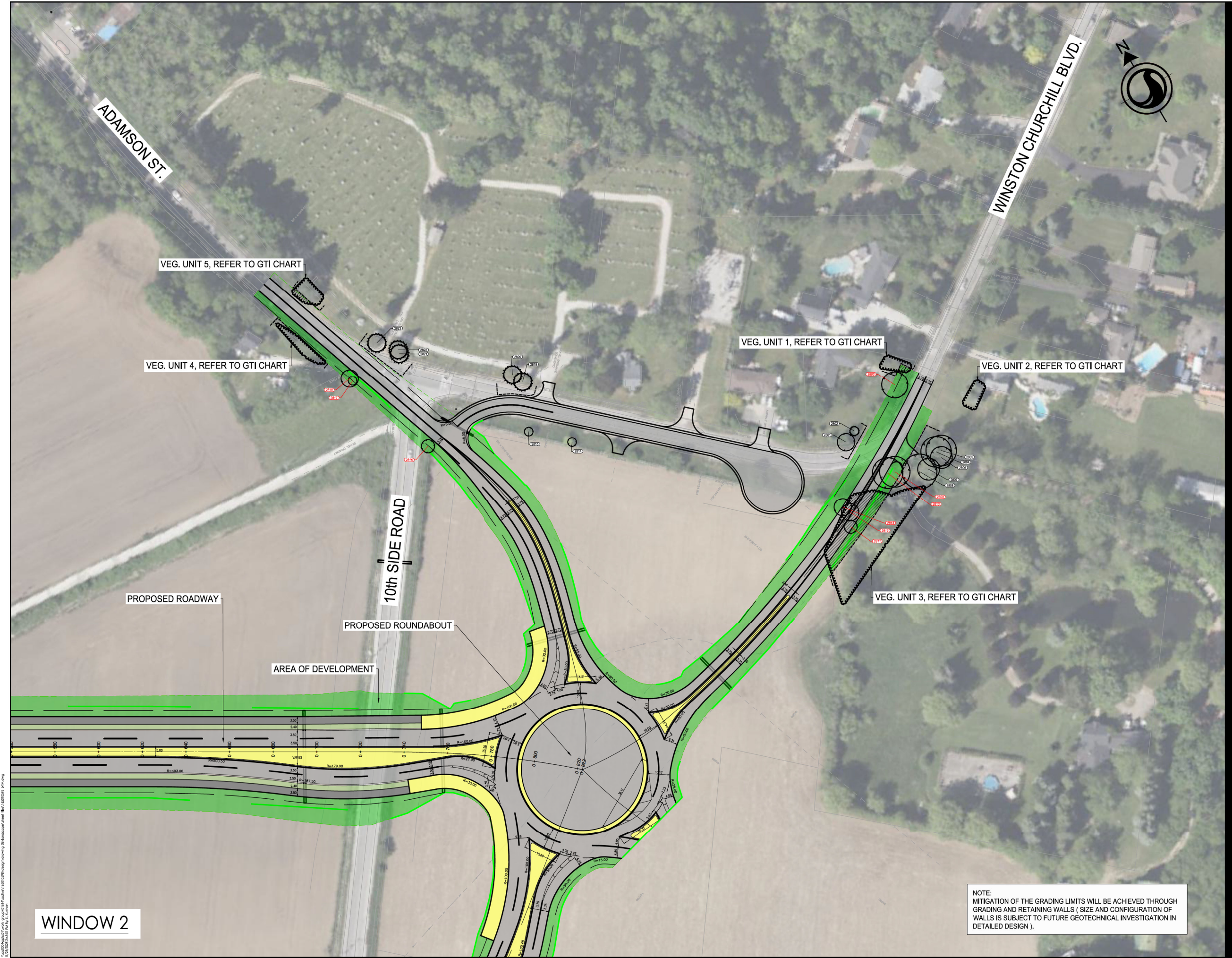
Project No. 145010598
Scale 1:750
Revision 0
Sheet 2 of 3
Drawing No.

L-901



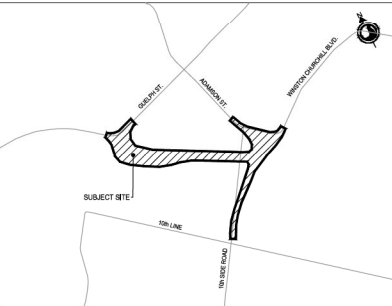
WINDOW 1

NOTE:
MITIGATION OF THE GRADING LIMITS WILL BE ACHIEVED THROUGH
GRADING AND RETAINING WALLS (SIZE AND CONFIGURATION OF
WALLS IS SUBJECT TO FUTURE GEOTECHNICAL INVESTIGATION IN
DETAILED DESIGN).



Copyright Reserved
The Contractor shall verify and be responsible for all dimensions. DO NOT scale the drawing
- any errors or omissions shall be reported to Stantec without delay.
The Copyrights to all designs and drawings are the property of Stantec. Reproduction or
use for any purpose other than that authorized by Stantec is forbidden.

Key Map NTS.



Legend

- Existing Deciduous Tree
- Existing Coniferous Tree
- Tree to be Retained and Protected Identification Tag
- Tree to be Retained and Protected, Reduced TPZ
- Tree to be Removed Identification Tag
- Proposed Tree Protection Fencing
- Existing Vegetation Unit to be Retained and Protected
- Existing Vegetation Unit to be Removed
- Dead Standing Tree
- Bypass Area of Development
- Proposed Sidewalk/Median

REVISION PER UPDATED DESIGN	XL	TH	2025.11.17
ISSUED FOR REVIEW	JL	TH	2024.06.19
Revision/Issue	By	Appd	Y1111.MW.DD
File Name: 145010598_L1-M	Dwn.	Dign.	Chkd.
			Y1111.MW.DD

Permit-Seal



Client/Project
Regional Municipality of Halton, ON

Norval West Bypass - Class EA

Halton Hills, ON

Title
Tree Management Plan
Window 2

NOTE:
MITIGATION OF THE GRADING LIMITS WILL BE ACHIEVED THROUGH
GRADING AND RETAINING WALLS (SIZE AND CONFIGURATION OF
WALLS IS SUBJECT TO FUTURE GEOTECHNICAL INVESTIGATION IN
DETAILED DESIGN).

APPENDIX B:
Table A, Detailed Tree Inventory,
Table B, General Tree Inventory

TABLE A. Detailed Tree Inventory - Norval West Bypass
Norval, Ontario
Data collected: May 21st -24th & 28th 2024

Tree ID	Botanical Name	Common Name	DBH (cm)						Dripline Radius (m)	Minimum TPZ (m)	Condition				Comments	Action	Removal/Injury Justification	Compensation Trees	Permit Type	Within Woodland
			Stem 1	Stem 2	Stem 3	Stem 4	Stem 5	Stem 6			Trunk Integrity	Crown Structure	Crown Vigour	Overall Condition						
2801	<i>Acer platanoides</i>	Norway Maple	27	20	16	-	-	-	4.0	2.4	Poor	Fair	Good	Fair	Minor deadwood. Co-dominant. Included bark union	Protect - Hoarding		-	N/A	No
2802	<i>Picea glauca</i>	White Spruce	20	-	-	-	-	-	2.0	1.8	Good	Good	Good	Good	Minor deadwood	Protect - Hoarding		-	N/A	No
2803	<i>Acer platanoides</i>	Norway Maple	55	-	-	-	-	-	6.0	3.6	Good	Poor	Good	Fair	Minor deadwood. Hydro pruned	Remove	Within Bypass Development Area	-	Removal	No
2804	<i>Acer saccharum</i>	Sugar Maple	57	-	-	-	-	-	7.0	3.6	Good	Good	Good	Good	Minor deadwood	Protect - Hoarding		-	N/A	No
2805	<i>Robinia pseudoacacia</i>	Black Locust	75	-	-	-	-	-	7.0	4.8	Poor	Fair	Poor	Poor	Minor deadwood. Trunk lean. Crack in main trunk. Trunk wounds	Protect - Hoarding		-	N/A	No
2806	<i>Robinia pseudoacacia</i>	Black Locust	63	-	-	-	-	-	5.0	4.2	Poor	Fair	Poor	Poor	Minor deadwood. Trunk wounds	Protect - Hoarding		-	N/A	No
2807	<i>Acer saccharum</i>	Sugar Maple	58	-	-	-	-	-	5.0	3.6	Good	Good	Good	Good	Minor deadwood	Protect - Hoarding		-	N/A	No
2808	<i>Robinia pseudoacacia</i>	Black Locust	77	73	-	-	-	-	8.0	4.8	Poor	Fair	Poor	Poor	Minor deadwood. Co-dominant. Crack in main trunk. Trunk wounds	Protect - Hoarding		-	N/A	No
2809	<i>Robinia pseudoacacia</i>	Black Locust	126	-	-	-	-	-	7.0	7.6	Poor	Fair	Poor	Fair	Major deadwood. Broken branch	Remove	Within Bypass Development Area	-	Removal	No
2810	<i>Robinia pseudoacacia</i>	Black Locust	117	-	-	-	-	-	7.0	7.0	Poor	Fair	Poor	Fair	Major deadwood. Broken branch	Remove	Within Bypass Development Area	-	Removal	No
2811	<i>Juglans nigra</i>	Black Walnut	20	-	-	-	-	-	3.0	1.8	Good	Good	Good	Good	Minor deadwood	Remove	Within Bypass Development Area	-	Removal	No
2812	<i>Robinia pseudoacacia</i>	Black Locust	33	27	-	-	-	-	4.0	2.4	Fair	Good	Good	Good	Minor deadwood. Co-dominant	Remove	Within Bypass Development Area	-	Removal	No
2813	<i>Juglans nigra</i>	Black Walnut	32	15	-	-	-	-	4.0	2.4	Fair	Good	Good	Good	Minor deadwood. Co-dominant	Remove	Within Bypass Development Area	-	Removal	No
2814	<i>Acer platanoides</i>	Norway Maple	27	-	-	-	-	-	2.0	2.4	Fair	Poor	Good	Poor	Minor deadwood. Topped	Protect - Hoarding		-	N/A	No
2815	<i>Acer platanoides</i>	Norway Maple	21	-	-	-	-	-	2.0	1.8	Fair	Poor	Fair	Poor	Minor deadwood. Trunk wounds. Topped	Protect - Hoarding		-	N/A	No
2816	<i>Juglans nigra</i>	Black Walnut	23	18	-	-	-	-	3.0	2.4	Fair	Fair	Fair	Fair	Minor deadwood. Co-dominant	Remove	Within Bypass Development Area	-	Removal	No
2817	<i>Juglans nigra</i>	Black Walnut	18	-	-	-	-	-	2.0	1.8	Good	Fair	Good	Fair	Minor deadwood. Hydro pruned	Remove	Within Bypass Development Area	-	Removal	No
2818	<i>Juglans nigra</i>	Black Walnut	28	-	-	-	-	-	4.0	2.4	Good	Poor	Good	Poor	Minor deadwood. Hydro pruned. Covered in vines	Remove	Within Bypass Development Area	-	Removal	No
2819	<i>Picea abies</i>	Norway Spruce	42	-	-	-	-	-	4.0	3.0	Good	Good	Fair	Good	Minor deadwood. Raised crown	Protect - Hoarding		-	N/A	No
2820	<i>Picea abies</i>	Norway Spruce	41	-	-	-	-	-	4.0	2.4	Good	Good	Fair	Good	Minor deadwood. Raised crown. Trunk lean	Protect - Hoarding		-	N/A	No
2821	<i>Pinus sylvestris</i>	Scots Pine	42	-	-	-	-	-	4.0	3.0	Good	Good	Fair	Fair	Minor deadwood. Raised crown	Protect - Hoarding		-	N/A	No
2822	<i>Pinus sylvestris</i>	Scots Pine	40	-	-	-	-	-	4.0	2.4	Good	Good	Fair	Fair	Minor deadwood. Raised crown	Protect - Hoarding		-	N/A	No
2823	<i>Pinus sylvestris</i>	Scots Pine	43	-	-	-	-	-	4.0	3.0	Good	Good	Fair	Fair	Minor deadwood. Raised crown	Protect - Hoarding		-	N/A	No
2824	<i>Acer negundo</i>	Manitoba Maple	23	20	20	-	-	-	5.0	2.4	Fair	Fair	Fair	Fair	Minor deadwood. Co-dominant. Epicormic shooting	Remove	Within Bypass Development Area	-	Removal	Yes
2825	<i>Juglans nigra</i>	Black Walnut	25	-	-	-	-	-	3.0	2.4	Good	Good	Good	Good	Minor deadwood	Remove	Within Bypass Development Area	-	Removal	Yes
2826	<i>Juglans nigra</i>	Black Walnut	67	-	-	-	-	-	7.0	4.2	Fair	Good	Good	Good	Minor deadwood. Trunk wounds	Remove	Within Bypass Development Area	-	Removal	Yes
2827	<i>Picea glauca</i>	White Spruce	17	-	-	-	-	-	1.0	1.8	Fair	Fair	Fair	Fair	Minor deadwood. Raised crown	Remove	Within Bypass Development Area	-	Removal	Yes
2828	<i>Acer saccharum</i>	Sugar Maple	27	-	-	-	-	-	3.0	2.4	Fair	Fair	Fair	Fair	Minor deadwood	Protect - Hoarding		-	N/A	Yes
2829	<i>Juglans nigra</i>	Black Walnut	30	23	-	-	-	-	4.0	2.4	Fair	Good	Good	Good	Minor deadwood. Co-dominant. Covered in vines	Protect - Hoarding		-	N/A	Yes
2830	<i>Juglans nigra</i>	Black Walnut	40	-	-	-	-	-	7.0	3.6	Good	Good	Good	Good	Minor deadwood. Covered in vines	Protect - Hoarding		-	N/A	Yes
2831	<i>Ulmus sp.</i>	Elm sp.	26	-	-	-	-	-	4.0	2.4	Good	Good	Good	Good	Minor deadwood. Covered in vines	Protect - Hoarding		-	N/A	Yes
2832	<i>Juglans nigra</i>	Black Walnut	42	-	-	-	-	-	8.0	3.0	Good	Fair	Good	Good	Minor deadwood. Covered in vines	Protect - Hoarding		-	N/A	Yes
2833	<i>Juglans nigra</i>	Black Walnut	64	-	-	-	-	-	9.0	4.2	Good	Good	Good	Good	Minor deadwood	Protect - Hoarding		-	N/A	Yes
2834	<i>Juglans nigra</i>	Black Walnut	26	-	-	-	-	-	3.0	2.4	Fair	Fair	Good	Fair	Minor deadwood. Covered in vines	Protect - Hoarding		-	N/A	Yes
2835	<i>Juglans nigra</i>	Black Walnut	27	-	-	-	-	-	3.0	2.4	Fair	Fair	Good	Fair	Minor deadwood. Covered in vines	Protect - Hoarding		-	N/A	Yes
2836	<i>Juglans nigra</i>	Black Walnut	21	-	-	-	-	-	3.0	1.8	Fair	Fair	Good	Fair	Minor deadwood. Covered in vines	Protect - Hoarding		-	N/A	Yes
2837	<i>Juglans nigra</i>	Black Walnut	17	-	-	-	-	-	2.0	1.8	Fair	Fair	Good	Fair	Minor deadwood. Covered in vines	Protect - Hoarding		-	N/A	Yes
2838	<i>Juglans nigra</i>	Black Walnut	29	-	-	-	-	-	3.0	2.4	Good	Fair	Good	Good	Minor deadwood. Covered in vines	Protect - Hoarding		-	N/A	Yes
2839	<i>Juglans nigra</i>	Black Walnut	39	-	-	-	-	-	4.0	2.4	Good	Fair	Good	Good	Minor deadwood. Covered in vines	Protect - Hoarding		-	N/A	Yes
2840	<i>Juglans nigra</i>	Black Walnut	38	-	-	-	-	-	4.0	2.4	Good	Fair	Fair	Good	Minor deadwood. Covered in vines	Protect - Hoarding		-	N/A	Yes
2841	<i>Juglans nigra</i>	Black Walnut	22	-	-	-	-	-	2.0	2.4	Good	Fair	Fair	Good	Minor deadwood. Covered in vines	Protect - Hoarding		-	N/A	Yes
2842	<i>Juglans nigra</i>	Black Walnut	19	-	-	-	-	-	2.0	1.8	Good	Fair	Fair	Good	Minor deadwood. Covered in vines	Protect - Hoarding		-	N/A	Yes
2843	<i>Fraxinus pennsylvanica</i>	Green Ash	18	15	-	-	-	-	2.0	1.8	Poor	Poor	Poor	Good	Minor deadwood. Co-dominant. Epicormic shooting	Protect - Hoarding		-	N/A	Yes
2844	<i>Juglans nigra</i>	Black Walnut	24	-	-	-	-	-	3.0	2.4	Good	Good	Fair	Fair	Minor deadwood. Covered in vines	Protect - Reduced TPZ	Adjacent to Bypass Development	-	Injury	Yes
2845	<i>Juglans nigra</i>	Black Walnut	21	-	-	-	-	-	2.0	1.8	Good	Good	Fair	Fair	Minor deadwood. Covered in vines	Protect - Reduced TPZ	Adjacent to Bypass Development	-	Injury	Yes
2846	<i>Juglans nigra</i>	Black Walnut	42	-	-	-	-	-	7.0	3.0	Good	Good	Fair	Fair	Minor deadwood. Covered in vines	Protect - Hoarding		-	N/A	Yes
2847	<i>Fraxinus pennsylvanica</i>	Green Ash	18	-	-	-	-	-	2.0	1.8	Poor	Poor	Poor	Good	Minor deadwood. Covered in vines. Epicormic shooting	Protect - Hoarding		-	N/A	Yes
2848	<i>Juglans nigra</i>	Black Walnut	55	-	-	-	-	-	7.0	3.6	Good	Good	Fair	Fair	Minor deadwood. Covered in vines	Protect - Hoarding		-	N/A	Yes
2849	<i>Fraxinus pennsylvanica</i>	Green Ash	17	-	-	-	-	-	2.0	1.8	Poor	Poor	Poor	Good	Minor deadwood. Covered in vines. Epicormic shooting	Remove	Within Bypass Development Area	2	Removal	Yes
2850	<i>Fraxinus pennsylvanica</i>	Green Ash	18	-	-	-	-	-	2.0	1.8	Poor	Poor	Poor	Good	Minor deadwood. Covered in vines. Epicormic shooting	Remove	Within Bypass Development Area	2	Removal	Yes
2851	<i>Juglans nigra</i>	Black Walnut	18	-	-	-	-	-	2.0	1.8	Good	Good	Good	Good	Minor deadwood. Covered in vines	Remove	Within Bypass Development Area	2		

TABLE A. Detailed Tree Inventory - Norval West Bypass
Norval, Ontario
Data collected: May 21st -24th & 28th 2024

Tree ID	Botanical Name	Common Name	DBH (cm)						Dripline Radius (m)	Minimum TPZ (m)	Condition				Comments	Action	Removal/Injury Justification	Compensation Trees	Permit Type	Within Woodland
			Stem 1	Stem 2	Stem 3	Stem 4	Stem 5	Stem 6			Trunk Integrity	Crown Structure	Crown Vigour	Overall Condition						
2890	<i>Pinus strobus</i>	White Pine	40	-	-	-	-	-	5.0	2.4	Good	Fair	Fair	Fair	Minor deadwood. Thin crown	Protect - Hoarding		-	N/A	Yes
2891	<i>Juglans nigra</i>	Black Walnut	60	-	-	-	-	-	12.0	3.6	Good	Fair	Fair	Fair	Minor deadwood	Protect - Hoarding		-	N/A	Yes
2892	<i>Juglans nigra</i>	Black Walnut	31	-	-	-	-	-	4.0	2.4	Good	Fair	Fair	Fair	Minor deadwood	Protect - Hoarding		-	N/A	Yes
2893	<i>Juglans nigra</i>	Black Walnut	20	-	-	-	-	-	2.0	1.8	Good	Fair	Poor	Fair	Minor deadwood. Covered in vines	Protect - Hoarding		-	N/A	Yes
2894	<i>Juglans nigra</i>	Black Walnut	21	-	-	-	-	-	2.0	1.8	Poor	Fair	Poor	Fair	Minor deadwood. Covered in vines. Trunk wounds	Protect - Hoarding		-	N/A	Yes
2895	<i>Juglans nigra</i>	Black Walnut	77	-	-	-	-	-	12.0	4.8	Fair	Fair	Fair	Fair	Minor deadwood. Covered in vines	Protect - Hoarding		-	N/A	Yes
2896	<i>Juglans nigra</i>	Black Walnut	23	-	-	-	-	-	2.0	2.4	Fair	Fair	Fair	Fair	Minor deadwood. Covered in vines	Protect - Hoarding		-	N/A	Yes
2897	<i>Juglans nigra</i>	Black Walnut	33	-	-	-	-	-	4.0	2.4	Fair	Fair	Fair	Fair	Minor deadwood. Covered in vines	Protect - Hoarding		-	N/A	Yes
2898	<i>Juglans nigra</i>	Black Walnut	33	-	-	-	-	-	4.0	2.4	Fair	Fair	Fair	Fair	Minor deadwood. Covered in vines	Protect - Hoarding		-	N/A	Yes
2899	<i>Juglans nigra</i>	Black Walnut	33	-	-	-	-	-	4.0	2.4	Fair	Poor	Fair	Fair	Minor deadwood. Covered in vines. Broken branch	Protect - Hoarding		-	N/A	Yes
2900	<i>Juglans nigra</i>	Black Walnut	17	-	-	-	-	-	1.0	1.8	Fair	Fair	Fair	Fair	Minor deadwood. Covered in vines	Protect - Hoarding		-	N/A	Yes
2901	<i>Juglans nigra</i>	Black Walnut	23	-	-	-	-	-	1.0	2.4	Fair	Fair	Poor	Fair	Minor deadwood. Covered in vines	Protect - Hoarding		-	N/A	Yes
2902	<i>Acer saccharum</i>	Sugar Maple	18	-	-	-	-	-	3.0	1.8	Good	Good	Good	Good	Minor deadwood	Protect - Hoarding		-	N/A	Yes
2903	<i>Juglans nigra</i>	Black Walnut	19	-	-	-	-	-	1.0	1.8	Fair	Fair	Poor	Fair	Minor deadwood. Covered in vines	Protect - Hoarding		-	N/A	Yes
2904	<i>Juglans nigra</i>	Black Walnut	31	-	-	-	-	-	3.0	2.4	Fair	Fair	Fair	Fair	Minor deadwood. Covered in vines	Protect - Hoarding		-	N/A	Yes
2905	<i>Juglans nigra</i>	Black Walnut	20	-	-	-	-	-	1.0	1.8	Fair	Fair	Poor	Fair	Minor deadwood. Covered in vines	Protect - Hoarding		-	N/A	Yes
2906	<i>Juglans nigra</i>	Black Walnut	26	-	-	-	-	-	3.0	2.4	Fair	Fair	Poor	Fair	Minor deadwood. Covered in vines	Protect - Hoarding		-	N/A	Yes
2907	<i>Juglans nigra</i>	Black Walnut	31	-	-	-	-	-	4.0	2.4	Fair	Fair	Poor	Fair	Minor deadwood. Covered in vines	Protect - Hoarding		-	N/A	Yes
2908	<i>Juglans nigra</i>	Black Walnut	20	-	-	-	-	-	3.0	1.8	Fair	Fair	Fair	Fair	Minor deadwood. Covered in vines	Protect - Hoarding		-	N/A	Yes
2909	<i>Juglans nigra</i>	Black Walnut	19	-	-	-	-	-	3.0	1.8	Fair	Fair	Fair	Fair	Minor deadwood. Covered in vines	Protect - Hoarding		-	N/A	Yes
2910	<i>Juglans nigra</i>	Black Walnut	21	-	-	-	-	-	3.0	1.8	Fair	Fair	Fair	Fair	Minor deadwood. Covered in vines	Remove	Within Bypass Development Area	2	Removal	Yes
2911	<i>Juglans nigra</i>	Black Walnut	23	-	-	-	-	-	3.0	2.4	Fair	Fair	Fair	Fair	Minor deadwood. Covered in vines	Remove	Within Bypass Development Area	2	Removal	Yes
2912	<i>Juglans nigra</i>	Black Walnut	32	-	-	-	-	-	4.0	2.4	Fair	Fair	Fair	Fair	Minor deadwood. Covered in vines	Remove	Within Bypass Development Area	2	Removal	Yes
2913	<i>Juglans nigra</i>	Black Walnut	18	-	-	-	-	-	2.0	1.8	Fair	Fair	Fair	Fair	Minor deadwood. Covered in vines	Remove	Within Bypass Development Area	2	Removal	Yes
2914	<i>Juglans nigra</i>	Black Walnut	35	-	-	-	-	-	3.0	2.4	Fair	Fair	Fair	Fair	Minor deadwood. Covered in vines	Remove	Within Bypass Development Area	2	Removal	Yes
2915	<i>Juglans nigra</i>	Black Walnut	44	-	-	-	-	-	6.0	3.0	Fair	Fair	Fair	Fair	Minor deadwood. Covered in vines	Remove	Within Bypass Development Area	2	Removal	Yes
2917	<i>Juglans nigra</i>	Black Walnut	15	-	-	-	-	-	1.0	1.8	Fair	Fair	Fair	Fair	Minor deadwood. Covered in vines	Remove	Within Bypass Development Area	2	Removal	Yes
2918	<i>Fraxinus pennsylvanica</i>	Green Ash	30	30	-	-	-	-	1.0	2.4	Dead	Dead	Dead	Dead	EAB	Remove - Dead	Hazard	-	N/A	Yes
2919	<i>Juglans nigra</i>	Black Walnut	23	-	-	-	-	-	1.0	2.4	Poor	Poor	Poor	Poor	Minor deadwood. In decline	Remove	Within Bypass Development Area	2	Removal	Yes
2920	<i>Fraxinus pennsylvanica</i>	Green Ash	36	-	-	-	-	-	1.0	2.4	Dead	Dead	Dead	Dead	EAB	Remove - Dead	Hazard	-	N/A	Yes
2921	<i>Pinus strobus</i>	White Pine	35	-	-	-	-	-	3.0	2.4	Good	Fair	Fair	Fair	Minor deadwood. Thin crown. Covered in vines	Remove	Within Bypass Development Area	2	Removal	Yes
2922	<i>Fraxinus pennsylvanica</i>	Green Ash	28	-	-	-	-	-	1.0	2.4	Poor	Poor	Poor	Poor	EAB	Remove	Within Bypass Development Area	2	Removal	Yes
2923	<i>Pinus strobus</i>	White Pine	55	-	-	-	-	-	1.0	3.6	Dead	Dead	Dead	Dead		Remove - Dead	Hazard	-	N/A	Yes
2924	<i>Pinus strobus</i>	White Pine	38	-	-	-	-	-	4.0	2.4	Poor	Poor	Poor	Poor	Minor deadwood. Thin crown. In decline. Covered in vines	Remove	Within Bypass Development Area	2	Removal	Yes
2925	<i>Juglans nigra</i>	Black Walnut	29	-	-	-	-	-	4.0	2.4	Fair	Fair	Fair	Fair	Minor deadwood. Covered in vines	Remove	Within Bypass Development Area	2	Removal	Yes
2926	<i>Juglans nigra</i>	Black Walnut	20	-	-	-	-	-	4.0	1.8	Fair	Fair	Fair	Fair	Minor deadwood. Covered in vines	Remove	Within Bypass Development Area	2	Removal	Yes
2927	<i>Juglans nigra</i>	Black Walnut	15	-	-	-	-	-	4.0	1.8	Fair	Fair	Fair	Fair	Minor deadwood. Covered in vines	Remove	Within Bypass Development Area	2	Removal	Yes
2928	<i>Juglans cinerea</i>	Butternut	26	-	-	-	-	-	3.0	2.4	Fair	Fair	Fair	Fair	Minor deadwood	Remove	Within Bypass Development Area	2	Removal	Yes
2929	<i>Tilia americana</i>	Basswood	33	15	-	-	-	-	4.0	2.4	Good	Good	Good	Good	Minor deadwood. Co-dominant	Remove	Within Bypass Development Area	2	Removal	Yes
2930	<i>Juglans nigra</i>	Black Walnut	15	-	-	-	-	-	1.0	1.8	Poor	Poor	Poor	Poor	Minor deadwood	Remove	Within Bypass Development Area	2	Removal	Yes
2931	<i>Quercus macrocarpa</i>	Bur Oak	28	-	-	-	-	-	2.0	2.4	Good	Fair	Good	Fair	Minor deadwood. Covered in vines	Remove	Within Bypass Development Area	2	Removal	Yes
2932	<i>Juglans nigra</i>	Black Walnut	52	-	-	-	-	-	9.0	3.6	Good	Fair	Good	Fair	Minor deadwood. Covered in vines	Remove	Within Bypass Development Area	2	Removal	Yes
2933	<i>Juglans nigra</i>	Black Walnut	72	-	-	-	-	-	14.0	4.8	Fair	Fair	Fair	Fair	Minor deadwood. Covered in vines	Remove	Within Bypass Development Area	2	Removal	Yes
2934	<i>Fraxinus pennsylvanica</i>	Green Ash	75	45	-	-	-	-	2.0	4.8	Dead	Dead	Dead	Dead	EAB	Protect - Hoarding		-	N/A	Yes
2935	<i>Tilia americana</i>	Basswood	25	-	-	-	-	-	4.0	2.4	Fair	Fair	Good	Fair	Minor deadwood. Trunk lean	Protect - Reduced TPZ	Adjacent to Bypass Development	-	Injury	Yes
2936	<i>Juglans nigra</i>	Black Walnut	33	-	-	-	-	-	3.0	2.4	Fair	Fair	Fair	Fair	Minor deadwood. Covered in vines	Remove	Within Bypass Development Area	2	Removal	Yes
2937	<i>Juglans nigra</i>	Black Walnut	19	-	-	-	-	-	1.0	1.8	Fair	Fair	Fair	Fair	Minor deadwood. Covered in vines	Protect - Hoarding		-	N/A	Yes
2938	<i>Juglans nigra</i>	Black Walnut	29	-	-	-	-	-	3.0	2.4	Fair	Fair	Fair	Fair	Minor deadwood. Covered in vines	Remove	Within Bypass Development Area	2	Removal	Yes
2939	<i>Juglans nigra</i>	Black Walnut	52	36	-	-	-	-	8.0	3.6	Fair	Fair	Fair	Fair	Minor deadwood. Covered in vines. Co-dominant	Remove	Within Bypass Development Area	2	Removal	Yes
2940	<i>Juglans nigra</i>	Black Walnut	38	-	-	-	-	-	4.0	2.4	Fair	Fair	Fair	Fair	Minor deadwood. Covered in vines	Remove	Within Bypass Development Area	2	Removal	Yes
2941	<i>Juglans nigra</i>	Black Walnut	30	-	-	-	-	-	4.0	2.4	Fair	Fair	Fair	Fair	Minor deadwood. Covered in vines	Remove	Within Bypass Development Area	2	Removal	Yes
29																				

TABLE A. Detailed Tree Inventory - Norval West Bypass
Norval, Ontario
Data collected: May 21st -24th & 28th 2024

Tree ID	Botanical Name	Common Name	DBH (cm)						DripLine Radius (m)	Minimum TPZ (m)	Condition				Comments	Action	Removal/Injury Justification	Compensation Trees	Permit Type	Within Woodland
			Stem 1	Stem 2	Stem 3	Stem 4	Stem 5	Stem 6			Trunk Integrity	Crown Structure	Crown Vigour	Overall Condition						
2986	Juglans nigra	Black Walnut	22	-	-	-	-	-	3.0	2.4	Good	Fair	Good	Fair	Minor deadwood. Covered in vines	Remove	Within Bypass Development Area	2	Removal	Yes
2987	Juglans nigra	Black Walnut	23	-	-	-	-	-	3.0	2.4	Good	Fair	Good	Fair	Minor deadwood. Covered in vines	Remove	Within Bypass Development Area	2	Removal	Yes
2988	Juglans nigra	Black Walnut	36	-	-	-	-	-	4.0	2.4	Good	Fair	Good	Fair	Minor deadwood. Covered in vines	Remove	Within Bypass Development Area	2	Removal	Yes
2989	Juglans nigra	Black Walnut	33	-	-	-	-	-	4.0	2.4	Good	Fair	Good	Fair	Minor deadwood. Covered in vines	Remove	Within Bypass Development Area	2	Removal	Yes
2990	Acer negundo	Manitoba Maple	27	-	-	-	-	-	4.0	2.4	Poor	Poor	Fair	Poor	Minor deadwood. Covered in vines. Trunk wounds. Epicormic shooting	Remove	Within Bypass Development Area	2	Removal	Yes
2991	Juglans nigra	Black Walnut	23	-	-	-	-	-	4.0	2.4	Fair	Fair	Fair	Fair	Minor deadwood. Covered in vines	Remove	Within Bypass Development Area	2	Removal	Yes
2993	Acer negundo	Manitoba Maple	27	-	-	-	-	-	3.0	2.4	Poor	Poor	Fair	Poor	Minor deadwood. Covered in vines	Remove	Within Bypass Development Area	2	Removal	Yes
2992	Juglans nigra	Black Walnut	35	-	-	-	-	-	5.0	2.4	Fair	Fair	Fair	Fair	Minor deadwood. Covered in vines	Remove	Within Bypass Development Area	2	Removal	Yes
2994	Acer negundo	Manitoba Maple	22	-	-	-	-	-	3.0	2.4	Poor	Poor	Fair	Poor	Minor deadwood. Covered in vines. Failed stem(s)	Remove	Within Bypass Development Area	2	Removal	Yes
2995	Juglans nigra	Black Walnut	37	-	-	-	-	-	5.0	2.4	Fair	Fair	Fair	Fair	Minor deadwood. Covered in vines	Remove	Within Bypass Development Area	2	Removal	Yes
2996	Acer negundo	Manitoba Maple	24	-	-	-	-	-	4.0	2.4	Poor	Poor	Fair	Poor	Minor deadwood. Covered in vines. Epicormic shooting	Remove	Within Bypass Development Area	2	Removal	Yes
2997	Juglans nigra	Black Walnut	26	-	-	-	-	-	4.0	2.4	Fair	Fair	Fair	Fair	Minor deadwood. Covered in vines	Remove	Within Bypass Development Area	2	Removal	Yes
2998	Acer negundo	Manitoba Maple	30	27	24	-	-	-	4.0	2.4	Poor	Poor	Fair	Poor	Minor deadwood. Covered in vines. Epicormic shooting. Co-dominant	Protect - Reduced TPZ	Adjacent to Bypass Development	-	Injury	Yes
2999	Juglans nigra	Black Walnut	20	-	-	-	-	-	3.0	1.8	Fair	Fair	Fair	Fair	Minor deadwood. Covered in vines	Protect - Hoarding		-	N/A	Yes
3000	Juglans nigra	Black Walnut	26	-	-	-	-	-	3.0	2.4	Fair	Fair	Fair	Fair	Minor deadwood. Covered in vines	Protect - Hoarding		-	N/A	Yes
3001	Juglans nigra	Black Walnut	20	-	-	-	-	-	2.0	1.8	Fair	Fair	Fair	Fair	Minor deadwood. Covered in vines	Remove	Within Bypass Development Area	2	Removal	Yes
3002	Juglans nigra	Black Walnut	15	15	-	-	-	-	2.0	1.8	Fair	Fair	Fair	Fair	Minor deadwood. Covered in vines. Co-dominant	Remove	Within Bypass Development Area	2	Removal	Yes
3003	Juglans nigra	Black Walnut	31	-	-	-	-	-	2.0	2.4	Fair	Fair	Fair	Fair	Minor deadwood. Covered in vines	Remove	Within Bypass Development Area	2	Removal	Yes
3004	Juglans nigra	Black Walnut	31	-	-	-	-	-	2.0	2.4	Fair	Fair	Fair	Fair	Minor deadwood. Covered in vines	Remove	Within Bypass Development Area	2	Removal	Yes
3005	Juglans nigra	Black Walnut	36	-	-	-	-	-	2.0	2.4	Fair	Fair	Fair	Fair	Minor deadwood. Covered in vines	Remove	Within Bypass Development Area	2	Removal	Yes
3006	Juglans nigra	Black Walnut	22	-	-	-	-	-	3.0	2.4	Fair	Fair	Fair	Fair	Minor deadwood. Covered in vines	Remove	Within Bypass Development Area	2	Removal	Yes
3007	Acer negundo	Manitoba Maple	26	-	-	-	-	-	3.0	2.4	Poor	Fair	Good	Fair	Minor deadwood. Covered in vines. Epicormic shooting	Remove	Within Bypass Development Area	2	Removal	Yes
3008	Juglans nigra	Black Walnut	31	-	-	-	-	-	4.0	2.4	Fair	Fair	Fair	Fair	Minor deadwood. Covered in vines	Remove	Within Bypass Development Area	2	Removal	Yes
3009	Juglans nigra	Black Walnut	32	-	-	-	-	-	4.0	2.4	Fair	Fair	Fair	Fair	Minor deadwood. Covered in vines	Remove	Within Bypass Development Area	2	Removal	Yes
3010	Juglans nigra	Black Walnut	26	-	-	-	-	-	2.0	2.4	Fair	Fair	Fair	Fair	Minor deadwood. Covered in vines	Remove	Within Bypass Development Area	2	Removal	Yes
3011	Juglans nigra	Black Walnut	29	-	-	-	-	-	2.0	2.4	Fair	Fair	Fair	Fair	Minor deadwood. Covered in vines	Protect - Hoarding		-	N/A	Yes
3012	Juglans nigra	Black Walnut	20	-	-	-	-	-	2.0	1.8	Fair	Fair	Fair	Fair	Minor deadwood. Covered in vines	Protect - Hoarding		-	N/A	Yes
3013	Juglans nigra	Black Walnut	31	-	-	-	-	-	4.0	2.4	Fair	Fair	Fair	Fair	Minor deadwood. Covered in vines	Protect - Hoarding		-	N/A	Yes
3014	Fraxinus pennsylvanica	Green Ash	20	-	-	-	-	-	2.0	1.8	Fair	Fair	Fair	Fair	Minor deadwood. Covered in vines	Protect - Hoarding		-	N/A	Yes
3015	Juglans nigra	Black Walnut	33	-	-	-	-	-	5.0	2.4	Fair	Fair	Fair	Fair	Minor deadwood. Covered in vines	Protect - Hoarding		-	N/A	Yes
3016	Juglans nigra	Black Walnut	15	-	-	-	-	-	1.0	1.8	Fair	Fair	Fair	Fair	Minor deadwood. Covered in vines	Protect - Hoarding		-	N/A	Yes
3017	Juglans nigra	Black Walnut	15	-	-	-	-	-	1.0	1.8	Fair	Fair	Fair	Fair	Minor deadwood. Covered in vines	Protect - Hoarding		-	N/A	Yes
3018	Juglans nigra	Black Walnut	30	-	-	-	-	-	3.0	2.4	Fair	Fair	Fair	Fair	Minor deadwood. Covered in vines	Remove	Within Bypass Development Area	2	Removal	Yes
3019	Juglans nigra	Black Walnut	16	-	-	-	-	-	1.0	1.8	Fair	Fair	Fair	Fair	Minor deadwood. Covered in vines	Remove	Within Bypass Development Area	2	Removal	Yes
3020	Juglans nigra	Black Walnut	25	-	-	-	-	-	3.0	2.4	Fair	Fair	Poor	Fair	Minor deadwood. Covered in vines	Remove	Within Bypass Development Area	2	Removal	Yes
3021	Salix sp.	Willow sp.	25	-	-	-	-	-	2.0	2.4	Fair	Fair	Good	Fair	Minor deadwood. Covered in vines. Epicormic shooting	Remove	Within Bypass Development Area	2	Removal	Yes
3022	Salix sp.	Willow sp.	33	30	30	25	20	15	8.0	2.4	Poor	Fair	Good	Fair	Minor deadwood. Covered in vines. Epicormic shooting. Co-dominant	Remove	Within Bypass Development Area	2	Removal	Yes
3023	Juglans nigra	Black Walnut	24	-	-	-	-	-	2.0	2.4	Fair	Fair	Fair	Fair	Minor deadwood	Remove	Within Bypass Development Area	2	Removal	Yes
3024	Juglans nigra	Black Walnut	36	-	-	-	-	-	4.0	2.4	Fair	Fair	Fair	Fair	Minor deadwood. Covered in vines	Remove	Within Bypass Development Area	2	Removal	Yes
3025	Salix sp.	Willow sp.	25	-	-	-	-	-	1.0	2.4	Fair	Poor	Poor	Poor	Minor deadwood. Covered in vines	Remove	Within Bypass Development Area	2	Removal	Yes
3026	Juglans nigra	Black Walnut	16	-	-	-	-	-	2.0	1.8	Fair	Fair	Fair	Fair	Minor deadwood. Covered in vines	Remove	Within Bypass Development Area	2	Removal	Yes
3027	Salix sp.	Willow sp.	30	26	20	-	-	-	5.0	2.4	Fair	Fair	Fair	Fair	Minor deadwood. Covered in vines. Epicormic shooting. Co-dominant	Remove	Within Bypass Development Area	2	Removal	Yes
3028	Juglans nigra	Black Walnut	20	-	-	-	-	-	3.0	1.8	Fair	Fair	Fair	Fair	Minor deadwood. Covered in vines	Remove	Within Bypass Development Area	2	Removal	Yes
3029	Acer negundo	Manitoba Maple	20	-	-	-	-	-	3.0	1.8	Fair	Fair	Good	Fair	Minor deadwood. Covered in vines. Epicormic shooting	Remove	Within Bypass Development Area	2	Removal	Yes
3030	Fraxinus pennsylvanica	Green Ash	15	-	-	-	-	-	2.0	1.8	Fair	Fair	Fair	Fair	Minor deadwood. Covered in vines. Epicormic shooting	Remove	Within Bypass Development Area	2	Removal	Yes
3031	Acer negundo	Manitoba Maple	26	20	-	-	-	-	5.0	2.4	Poor	Fair	Fair	Fair	Minor deadwood. Covered in vines. Epicormic shooting. Co-dominant	Remove	Within Bypass Development Area	2	Removal	Yes
3032	Juglans nigra	Black Walnut	18	-	-	-	-	-	3.0	1.8	Fair	Fair	Fair	Fair	Minor deadwood. Covered in vines	Remove	Within Bypass Development Area	2	Removal	Yes
3033	Juglans nigra	Black Walnut	20	-	-	-	-	-	3.0	1.8	Fair	Fair	Fair	Fair	Minor deadwood. Covered in vines	Remove	Within Bypass Development Area	2	Removal	Yes
3034	Juglans nigra	Black Walnut	17	-	-	-	-	-	2.0	1.8	Fair	Fair	Fair	Fair	Minor deadwood	Remove	Within Bypass Development Area	2	Removal	Yes
3035	Juglans nigra	Black Walnut	15	15	-	-	-	-	2.0	1.8	Fair	Fair	Fair	Fair	Minor deadwood. Co-dominant	Remove	Within Bypass Development Area	2	Removal	Yes
3036	Juglans nigra	Black Walnut	20	-	-	-	-	-	2.0	1.8	Fair	Fair	Fair	Fair	Minor deadwood	Remove	Within Bypass Development Area	2	Removal	Yes
3037	Juglans nigra	Black Walnut	18	-	-	-	-	-	2.0	1.8	Fair	Fair	Fair	Fair	Minor deadwood	Remove	Within Bypass Development Area	2	Removal	Yes
3038	Juglans nigra	Black Walnut	15	-	-	-	-	-	2.0	1.8	Fair	Fair	Fair	Fair	Minor deadwood	Remove	Within Bypass Development Area	2	Removal	Yes
3039	Juglans nigra	Black Walnut	23	-	-	-	-	-	3.0	2.4	Fair	Fair	Fair	Fair	Minor deadwood	Remove	Within Bypass Development Area	2	Removal	Yes
3040	Juglans nigra	Black Walnut	23	-	-	-	-	-	3.0	2.4	Fair	Fair	Fair	Fair	Minor deadwood	Remove	Within Bypass Development Area	2	Removal	Yes
3041	Juglans nigra	Black Walnut	15	-	-	-	-	-	1.0	1.8	Fair	Fair	Fair	Fair	Minor deadwood	Remove	Within Bypass Development Area	2	Removal	Yes
3042	Juglans nigra	Black Walnut	15	-	-	-	-	-	1.0	1.8	Fair	Fair	Fair	Fair	Minor deadwood	Remove	Within Bypass Development Area	2	Removal	Yes
3043	Juglans nigra	Black Walnut	23	-	-	-	-	-	3.0	2.4	Fair	Fair	Fair	Fair	Minor deadwood. Covered in vines	Remove	Within Bypass Development Area	2	Removal	Yes
3044	Juglans nigra	Black Walnut	17	-	-	-	-	-	3.0	1.8	Fair	Fair	Good	Fair	Minor deadwood. Covered in vines	Remove	Within Bypass Development Area	2	Removal	Yes
3045	Juglans nigra	Black Walnut	15	-	-	-	-	-	2.0	1.8	Fair	Fair	Good	Fair	Minor deadwood	Remove	Within Bypass Development Area	2	Removal	Yes
3046	Juglans nigra	Black Walnut	37	-	-	-	-	-	4.0	2.4	Fair	Poor	Fair	Fair	Minor deadwood. Covered in vines	Remove	Within Bypass Development Area	2	Removal	Yes
3047	Juglans nigra	Black Walnut	16	-	-	-	-	-	2.0	1.8	Fair	Fair	Fair	Fair	Minor deadwood. Covered in vines	Remove	Within Bypass Development Area	2	Removal	Yes
3048	Juglans nigra	Black Walnut	15	-	-	-	-	-	2.0	1.8	Fair	Fair	Fair	Fair	Minor deadwood. Covered in vines	Remove	Within Bypass Development Area	2	Removal	Yes
3049	Juglans nigra	Black Walnut	18	-	-	-	-	-	2.0	1.8	Fair	Fair	Fair	Fair	Minor deadwood. Covered in vines	Remove	Within Bypass Development Area	2	Removal	Yes
3050	Juglans nigra	Black Walnut	16	-	-	-	-	-	2.0	1.8	Fair	Fair	Fair	Fair	Minor deadwood. Covered in vines	Remove	Within Bypass Development Area	2	Removal	Yes
3051	Juglans nigra	Black Walnut	23	-	-	-	-	-	3.0	2.4	Fair	Fair	Fair	Fair	Minor deadwood	Remove	Within Bypass Development Area	2	Removal	Yes
3052	Acer negundo	Manitoba Maple	23	23	-	-	-	-	5.0	2.4	Poor	Poor	Fair	Poor	Minor deadwood. Co-dominant. Epicormic shooting. Covered in vines	Remove	Within Bypass Development Area	2	Removal	Yes
3053	Pinus strobus	White Pine	23	-	-	-	-	-	3.0	2.4	Good	Fair	Fair	Fair	Minor deadwood. Thin crown	Remove	Within Bypass Development Area	2	Removal	Yes
3054	Pinus strobus	White Pine	17	-	-	-	-	-	3.0	1.8	Good	Fair	Fair	Fair	Minor deadwood. Thin crown	Remove	Within Bypass Development Area	2	Removal	Yes
3055	Juglans nigra	Black Walnut	19	-	-	-	-	-	2.0	1.8	Fair	Fair	Fair	Fair	Minor deadwood. Thin crown	Remove	Within Bypass Development Area	2	Removal	Yes
3056	Juglans nigra	Black Walnut	15	-	-	-	-	-	1.0	1.8	Fair	Fair	Poor	Poor	Minor deadwood. Thin crown	Remove	Within Bypass Development Area	2	Removal	Yes
3057	Juglans nigra	Black Walnut	23	-	-	-	-	-	1.0	2.4	Fair	Fair	Poor	Poor	Minor deadwood	Remove	Within Bypass Development Area	2	Removal	Yes
3058	Juglans nigra	Black Walnut	28	-	-	-	-	-	4.0	2.4	Fair	Fair	Poor	Poor	Minor deadwood	Remove	Within Bypass Development Area	2	Removal	Yes
3059	Juglans nigra	Black Walnut	18	-	-	-	-	-	3.0	1.8	Fair	Fair	Poor	Poor	Minor deadwood. Covered in vines	Remove	Within Bypass Development Area	2	Removal	Yes
3060	Juglans nigra	Black Walnut	20	-	-	-	-	-	1.0	1.8	Fair	Fair	Fair	Fair	Minor deadwood. Covered in vines	Protect - Hoarding		-	N/A	Yes
3061	Juglans nigra	Black Walnut	28	-	-	-	-	-	3.0	2.4	Fair	Fair	Fair	Fair	Minor deadwood	Protect - Hoarding		-	N/A	Yes
3062	Juglans nigra	Black Walnut	16	-	-	-	-	-	1.0	1.8	Fair	Fair	Fair	Fair	Minor deadwood. Covered in vines	Protect - Hoarding		-	N/A	Yes
3063	Fraxinus pennsylvanica	Green Ash	27	22	-	-	-	-	5.0	2.4	Fair	Fair	Fair	Fair	Minor deadwood. Covered in vines. Co-dominant. EAB. Epicormic shooting	Protect - Reduced TPZ	Adjacent to Bypass Development	-	Injury	Yes
3064	Juglans nigra	Black Walnut	16	-	-	-	-	-	2.0	1.8	Fair	Fair	Fair	Fair	Minor deadwood. Covered in vines	Remove	Within Bypass Development Area	2	Removal	Yes
3065	Juglans nigra	Black Walnut	22	-	-	-	-	-	3.0	2.4	Fair	Fair	Fair	Fair	Minor deadwood. Covered in vines	Remove	Within Bypass Development Area	2	Removal	Yes
3066	Juglans nigra	Black Walnut	15	-	-	-	-	-	1.0	1.8	Fair	Fair	Poor	Fair	Minor deadwood. Covered in vines	Remove	Within Bypass Development Area	2	Removal	Yes
3067	Fraxinus pennsylvanica	Green Ash	17	-	-	-														

TABLE A. Detailed Tree Inventory - Norval West Bypass
Norval, Ontario
Data collected: May 21st -24th & 28th 2024

Tree ID	Botanical Name	Common Name	DBH (cm)						DripIine Radius (m)	Minimum TPZ (m)	Condition				Comments	Action	Removal/Injury Justification	Compensation Trees	Permit Type	Within Woodland
			Stem 1	Stem 2	Stem 3	Stem 4	Stem 5	Stem 6			Trunk Integrity	Crown Structure	Crown Vigour	Overall Condition						
3082	Juglans nigra	Black Walnut	20	-	-	-	-	-	2.0	1.8	Fair	Fair	Poor	Fair	Minor deadwood	Protect - Hoarding	-	N/A	Yes	
3083	Juglans nigra	Black Walnut	20	-	-	-	-	-	2.0	1.8	Fair	Fair	Poor	Fair	Minor deadwood	Protect - Hoarding	-	N/A	Yes	
3084	Juglans nigra	Black Walnut	23	-	-	-	-	-	2.0	2.4	Fair	Fair	Poor	Fair	Minor deadwood	Protect - Hoarding	-	N/A	Yes	
3085	Juglans nigra	Black Walnut	18	-	-	-	-	-	2.0	1.8	Fair	Fair	Poor	Fair	Minor deadwood	Remove	Within Bypass Development Area	2	Removal	Yes
3086	Juglans nigra	Black Walnut	23	-	-	-	-	-	2.0	2.4	Fair	Fair	Poor	Fair	Minor deadwood	Remove	Within Bypass Development Area	2	Removal	Yes
3087	Juglans nigra	Black Walnut	26	-	-	-	-	-	3.0	2.4	Fair	Fair	Fair	Fair	Minor deadwood	Remove	Within Bypass Development Area	2	Removal	Yes
3088	Juglans nigra	Black Walnut	24	-	-	-	-	-	3.0	2.4	Fair	Fair	Fair	Fair	Minor deadwood	Remove	Within Bypass Development Area	2	Removal	Yes
3089	Pinus strobus	White Pine	30	-	-	-	-	-	5.0	2.4	Good	Good	Good	Good	Minor deadwood	Remove	Within Bypass Development Area	2	Removal	Yes
3090	Fraxinus pennsylvanica	Green Ash	18	17	12	-	-	-	4.0	1.8	Fair	Fair	Fair	Fair	Minor deadwood, Co-dominant, EAB	Remove	Within Bypass Development Area	2	Removal	Yes
3091	Juglans nigra	Black Walnut	19	-	-	-	-	-	2.0	1.8	Fair	Fair	Fair	Fair	Minor deadwood, Covered in vines	Remove	Within Bypass Development Area	2	Removal	Yes
3092	Juglans nigra	Black Walnut	22	-	-	-	-	-	2.0	2.4	Fair	Fair	Fair	Fair	Minor deadwood, Covered in vines	Remove	Within Bypass Development Area	2	Removal	Yes
3093	Juglans nigra	Black Walnut	24	-	-	-	-	-	3.0	2.4	Fair	Fair	Fair	Fair	Minor deadwood, Covered in vines	Remove	Within Bypass Development Area	2	Removal	Yes
3094	Juglans nigra	Black Walnut	16	-	-	-	-	-	2.0	1.8	Fair	Fair	Fair	Fair	Minor deadwood, Covered in vines	Remove	Within Bypass Development Area	2	Removal	Yes
3095	Juglans nigra	Black Walnut	19	-	-	-	-	-	2.0	1.8	Fair	Fair	Fair	Fair	Minor deadwood, Covered in vines	Remove	Within Bypass Development Area	2	Removal	Yes
3096	Juglans nigra	Black Walnut	17	-	-	-	-	-	2.0	1.8	Fair	Fair	Fair	Fair	Minor deadwood, Covered in vines	Remove	Within Bypass Development Area	2	Removal	Yes
3097	Juglans nigra	Black Walnut	18	14	-	-	-	-	3.0	1.8	Fair	Fair	Fair	Fair	Minor deadwood, Covered in vines	Remove	Within Bypass Development Area	2	Removal	Yes
3098	Juglans nigra	Black Walnut	16	-	-	-	-	-	2.0	1.8	Fair	Fair	Good	Fair	Minor deadwood, Covered in vines	Remove	Within Bypass Development Area	2	Removal	Yes
3099	Juglans nigra	Black Walnut	15	-	-	-	-	-	2.0	1.8	Fair	Fair	Good	Fair	Minor deadwood, Covered in vines	Remove	Within Bypass Development Area	2	Removal	Yes
3100	Juglans nigra	Black Walnut	20	-	-	-	-	-	2.0	1.8	Fair	Fair	Good	Fair	Minor deadwood, Covered in vines	Remove	Within Bypass Development Area	2	Removal	Yes
3101	Juglans nigra	Black Walnut	18	16	-	-	-	-	3.0	1.8	Fair	Fair	Good	Fair	Minor deadwood, Covered in vines	Remove	Within Bypass Development Area	2	Removal	Yes
3102	Juglans nigra	Black Walnut	17	-	-	-	-	-	3.0	1.8	Fair	Fair	Good	Fair	Minor deadwood, Covered in vines	Remove	Within Bypass Development Area	2	Removal	Yes
3103	Juglans nigra	Black Walnut	17	-	-	-	-	-	3.0	1.8	Fair	Fair	Good	Fair	Minor deadwood, Covered in vines	Remove	Within Bypass Development Area	2	Removal	Yes
3104	Juglans nigra	Black Walnut	16	-	-	-	-	-	3.0	1.8	Fair	Fair	Good	Fair	Minor deadwood, Covered in vines	Remove	Within Bypass Development Area	2	Removal	Yes
3105	Juglans nigra	Black Walnut	16	-	-	-	-	-	2.0	1.8	Fair	Fair	Fair	Fair	Minor deadwood, Covered in vines	Remove	Within Bypass Development Area	2	Removal	Yes
3106	Fraxinus pennsylvanica	Green Ash	15	-	-	-	-	-	2.0	1.8	Fair	Fair	Fair	Fair	Minor deadwood	Remove	Within Bypass Development Area	2	Removal	Yes
3107	Juglans nigra	Black Walnut	21	-	-	-	-	-	3.0	1.8	Fair	Fair	Fair	Fair	Minor deadwood, Covered in vines	Remove	Within Bypass Development Area	2	Removal	Yes
3108	Juglans nigra	Black Walnut	15	-	-	-	-	-	2.0	1.8	Fair	Fair	Fair	Fair	Minor deadwood	Remove	Within Bypass Development Area	2	Removal	Yes
3109	Juglans nigra	Black Walnut	17	-	-	-	-	-	2.0	1.8	Fair	Fair	Poor	Fair	Minor deadwood	Remove	Within Bypass Development Area	2	Removal	Yes
3110	Juglans nigra	Black Walnut	16	-	-	-	-	-	2.0	1.8	Fair	Fair	Poor	Fair	Minor deadwood	Remove	Within Bypass Development Area	2	Removal	Yes
3111	Juglans nigra	Black Walnut	16	-	-	-	-	-	2.0	1.8	Fair	Fair	Poor	Fair	Minor deadwood	Remove	Within Bypass Development Area	2	Removal	Yes
3112	Juglans nigra	Black Walnut	16	-	-	-	-	-	2.0	1.8	Fair	Fair	Poor	Fair	Minor deadwood	Remove	Within Bypass Development Area	2	Removal	Yes
3113	Fraxinus pennsylvanica	Green Ash	20	10	-	-	-	-	3.0	1.8	Fair	Fair	Good	Fair	Minor deadwood, Co-dominant, Epicormic shooting	Remove	Within Bypass Development Area	2	Removal	Yes
3114	Juglans nigra	Black Walnut	18	16	-	-	-	-	3.0	1.8	Fair	Fair	Fair	Fair	Minor deadwood, Co-dominant, Covered in vines	Remove	Within Bypass Development Area	2	Removal	Yes
3115	Juglans nigra	Black Walnut	20	-	-	-	-	-	3.0	1.8	Fair	Fair	Fair	Fair	Minor deadwood, Covered in vines	Remove	Within Bypass Development Area	2	Removal	Yes
3116	Juglans nigra	Black Walnut	18	-	-	-	-	-	3.0	1.8	Fair	Fair	Fair	Fair	Minor deadwood, Covered in vines	Remove	Within Bypass Development Area	2	Removal	Yes
3117	Juglans nigra	Black Walnut	17	-	-	-	-	-	2.0	1.8	Fair	Fair	Poor	Fair	Minor deadwood, Covered in vines	Remove	Within Bypass Development Area	2	Removal	Yes
3118	Juglans nigra	Black Walnut	16	-	-	-	-	-	2.0	1.8	Fair	Fair	Poor	Fair	Minor deadwood, Covered in vines	Remove	Within Bypass Development Area	2	Removal	Yes
3119	Juglans nigra	Black Walnut	18	-	-	-	-	-	2.0	1.8	Fair	Fair	Poor	Fair	Minor deadwood, Covered in vines	Remove	Within Bypass Development Area	2	Removal	Yes
3120	Juglans nigra	Black Walnut	16	-	-	-	-	-	2.0	1.8	Fair	Fair	Poor	Fair	Minor deadwood, Covered in vines	Remove	Within Bypass Development Area	2	Removal	Yes
3121	Juglans nigra	Black Walnut	18	-	-	-	-	-	2.0	1.8	Fair	Fair	Poor	Fair	Minor deadwood, Covered in vines	Remove	Within Bypass Development Area	2	Removal	Yes
3122	Juglans nigra	Black Walnut	15	-	-	-	-	-	2.0	1.8	Fair	Fair	Poor	Fair	Minor deadwood, Covered in vines	Remove	Within Bypass Development Area	2	Removal	Yes
3123	Juglans nigra	Black Walnut	16	-	-	-	-	-	2.0	1.8	Fair	Fair	Poor	Fair	Minor deadwood, Covered in vines	Remove	Within Bypass Development Area	2	Removal	Yes
3124	Juglans nigra	Black Walnut	15	12	-	-	-	-	2.0	1.8	Fair	Fair	Poor	Fair	Minor deadwood, Covered in vines, Co-dominant	Remove	Within Bypass Development Area	2	Removal	Yes
3125	Fraxinus pennsylvanica	Green Ash	16	-	-	-	-	-	3.0	1.8	Good	Good	Good	Good	Minor deadwood, Covered in vines	Remove	Within Bypass Development Area	2	Removal	Yes
3126	Juglans nigra	Black Walnut	16	-	-	-	-	-	2.0	1.8	Fair	Fair	Fair	Fair	Minor deadwood, Covered in vines	Remove	Within Bypass Development Area	2	Removal	Yes
3127	Juglans nigra	Black Walnut	27	-	-	-	-	-	5.0	2.4	Fair	Fair	Poor	Fair	Minor deadwood, Covered in vines	Remove	Within Bypass Development Area	2	Removal	Yes
3128	Juglans nigra	Black Walnut	29	-	-	-	-	-	5.0	2.4	Fair	Fair	Poor	Fair	Minor deadwood, Covered in vines	Remove	Within Bypass Development Area	2	Removal	Yes
3129	Juglans nigra	Black Walnut	15	-	-	-	-	-	2.0	1.8	Fair	Fair	Fair	Fair	Minor deadwood, Covered in vines	Remove	Within Bypass Development Area	2	Removal	Yes
3130	Pinus strobus	White Pine	34	-	-	-	-	-	5.0	2.4	Fair	Fair	Fair	Fair	Minor deadwood, Covered in vines	Remove	Within Bypass Development Area	2	Removal	Yes
3131	Juglans nigra	Black Walnut	16	-	-	-	-	-	3.0	1.8	Fair	Fair	Fair	Fair	Minor deadwood, Covered in vines	Remove	Within Bypass Development Area	2	Removal	Yes
3132	Juglans nigra	Black Walnut	18	-	-	-	-	-	3.0	1.8	Fair	Fair	Fair	Fair	Minor deadwood, Covered in vines	Remove	Within Bypass Development Area	2	Removal	Yes
3133	Juglans nigra	Black Walnut	15	-	-	-	-	-	2.0	1.8	Fair	Fair	Fair	Fair	Minor deadwood, Covered in vines	Remove	Within Bypass Development Area	2	Removal	Yes
3134	Juglans nigra	Black Walnut	18	-	-	-	-	-	2.0	1.8	Fair	Fair	Fair	Fair	Minor deadwood, Covered in vines	Remove	Within Bypass Development Area	2	Removal	Yes
3135	Prunus sp.	Cherry sp.	16	-	-	-	-	-	2.0	1.8	Fair	Fair	Good	Fair	Minor deadwood, Covered in vines	Remove	Within Bypass Development Area	2	Removal	Yes
3136	Fraxinus pennsylvanica	Green Ash	15	14	-	-	-	-	2.0	1.8	Fair	Fair	Good	Fair	Minor deadwood, Covered in vines, Co-dominant	Remove	Within Bypass Development Area	2	Removal	Yes
3137	Pinus strobus	White Pine	23	-	-	-	-	-	4.0	2.4	Good	Good	Good	Good	Minor deadwood	Remove	Within Bypass Development Area	2	Removal	Yes
3138	Pinus strobus	White Pine	23	-	-	-	-	-	4.0	2.4	Poor	Poor	Poor	Fair	Minor deadwood, Thin crown	Remove	Within Bypass Development Area	2	Removal	Yes
3139	Juglans nigra	Black Walnut	26	-	-	-	-	-	3.0	2.4	Fair	Fair	Fair	Fair	Minor deadwood	Remove	Within Bypass Development Area	2	Removal	Yes
3140	Juglans nigra	Black Walnut	28	-	-	-	-	-	4.0	2.4	Fair	Fair	Fair	Fair	Minor deadwood	Remove	Within Bypass Development Area	2	Removal	Yes
3141	Prunus sp.	Cherry sp.	21	-	-	-	-	-	3.0	1.8	Good	Good	Good	Good	Minor deadwood	Remove	Within Bypass Development Area	2	Removal	Yes
3142	Juglans nigra	Black Walnut	36	-	-	-	-	-	6.0	2.4	Good	Good	Good	Fair	Minor deadwood, Covered in vines	Protect - Reduced TPZ	Adjacent to Bypass Development	-	Injury	Yes
3143	Fraxinus pennsylvanica	Green Ash	18	-	-	-	-	-	3.0	1.8	Poor	Poor	Fair	Poor	Minor deadwood, Covered in vines, Epicormic shooting, EAB	Protect - Hoarding	-	N/A	Yes	
3144	Prunus sp.	Cherry sp.	16	-	-	-	-	-	2.0	1.8	Fair	Good	Good	Good	Minor deadwood, Trunk lean	Remove	Within Bypass Development Area	2	Removal	Yes
3145	Juglans nigra	Black Walnut	23	-	-	-	-	-	3.0	2.4	Fair	Fair	Fair	Fair	Minor deadwood, Covered in vines	Remove	Within Bypass Development Area	2	Removal	Yes
3146	Fraxinus pennsylvanica	Green Ash	15	-	-	-	-	-	2.0	1.8	Fair	Fair	Fair	Fair	Minor deadwood, Covered in vines	Remove	Within Bypass Development Area	2	Removal	Yes
3147	Fraxinus pennsylvanica	Green Ash	16	-	-	-	-	-	2.0	1.8	Poor	Fair	Fair	Poor	Minor deadwood, Covered in vines	Remove	Within Bypass Development Area	2	Removal	Yes
3148	Juglans nigra	Black Walnut	20	-	-	-	-	-	2.0	1.8	Fair	Fair	Fair	Fair	Minor deadwood, Covered in vines	Remove	Within Bypass Development Area	2	Removal	Yes
3149	Prunus sp.	Cherry sp.	20	-	-	-	-	-	2.0	1.8	Fair	Fair	Fair	Fair	Minor deadwood, Covered in vines	Remove	Within Bypass Development Area	2	Removal	Yes
3150	Juglans nigra	Black Walnut	29	-	-	-	-	-	6.0	2.4	Fair	Fair	Fair	Fair	Minor deadwood, Covered in vines	Protect - Hoarding	-	N/A	Yes	
3151	Juglans nigra	Black Walnut	17	-	-	-	-	-	2.0	1.8	Fair	Fair	Fair	Fair	Minor deadwood, Covered in vines	Protect - Hoarding	-	N/A	Yes	
3152	Fraxinus pennsylvanica	Green Ash	15	-	-	-	-	-	2.0	1.8	Fair	Fair	Fair	Fair	Minor deadwood, Covered in vines	Protect - Hoarding	-	N/A	Yes	
3153	Pinus strobus	White Pine	41	-	-	-	-	-	6.0	2.4	Fair	Fair	Fair	Fair	Minor deadwood, Covered in vines, Thin crown	Remove	Within Bypass Development Area	2	Removal	Yes
3154	Juglans nigra	Black Walnut	16	-	-	-	-	-	2.0	1.8	Fair	Fair	Fair	Fair	Minor deadwood, Covered in vines	Remove	Within Bypass Development Area	2	Removal	Yes
3155	Fraxinus pennsylvanica	Green Ash	16	-	-	-	-	-	2.0	1.8	Fair	Fair	Fair	Fair	Minor deadwood, Covered in vines	Remove	Within Bypass Development Area	2	Removal	Yes
3156	Juniperus virginiana	Red Cedar	19	-	-	-	-	-	3.0	1.8	Fair	Fair	Fair	Fair	Minor deadwood, Covered in vines, Thin crown	Remove	Within Bypass Development Area	2	Removal	Yes
3157	Juglans nigra	Black Walnut	32	27	-	-	-	-	7.0	2.4	Fair	Fair	Fair	Fair	Minor deadwood, Covered in vines, Co-dominant	Remove	Within Bypass Development Area	2	Removal	Yes
3158	Juglans nigra	Black Walnut	27	-	-	-	-	-	5.0	2.4	Fair	Fair	Fair	Fair	Minor deadwood, Covered in vines	Remove	Within Bypass Development Area	2	Removal	Yes
3159	Juglans nigra	Black Walnut	16	-	-	-	-	-	2.0	1.8	Fair	Fair	Fair	Fair	Minor deadwood, Covered in vines	Remove	Within Bypass Development Area	2	Removal	Yes
3160	Juglans nigra	Black Walnut	16	-	-	-	-	-	2.0	1.8	Fair	Fair	Fair	Fair	Minor deadwood, Covered in vines	Remove	Within Bypass Development Area	2	Removal	Yes
3161	Juglans nigra	Black Walnut	15	-	-	-	-	-	2.0	1.8	Fair	Fair	Fair	Fair	Minor deadwood, Covered in vines	Remove	Within Bypass Development Area	2	Removal	Yes
3162	Juglans nigra	Black Walnut	17	-	-	-	-	-	2.0	1.8	Fair	Fair	Fair	Fair	Minor deadwood, Covered in vines	Remove	Within Bypass Development Area	2	Removal	Yes
3163	Juglans nigra	Black Walnut	21	17	-	-	-	-	4.0	1.8	Fair	Fair	Poor	Fair	Minor deadwood, Covered in vines, Co-dominant	Remove				

TABLE A. Detailed Tree Inventory - Norval West Bypass
Norval, Ontario
Data collected: May 21st -24th & 28th 2024

Tree ID	Botanical Name	Common Name	DBH (cm)						Dripline Radius (m)	Minimum TPZ (m)	Condition				Comments	Action	Removal/Injury Justification	Compensation Trees	Permit Type	Within Woodland
			Stem 1	Stem 2	Stem 3	Stem 4	Stem 5	Stem 6			Trunk Integrity	Crown Structure	Crown Vigour	Overall Condition						
3178	Juglans nigra	Black Walnut	15	-	-	-	-	-	2.0	1.8	Fair	Fair	Fair	Fair	Minor deadwood. Covered in vines	Remove	Within Bypass Development Area	2	Removal	Yes
3179	Fraxinus pennsylvanica	Green Ash	16	-	-	-	-	-	3.0	1.8	Fair	Fair	Fair	Fair	Minor deadwood	Remove	Within Bypass Development Area	2	Removal	Yes
3180	Juglans nigra	Black Walnut	16	-	-	-	-	-	3.0	1.8	Fair	Fair	Fair	Fair	Minor deadwood. Covered in vines	Remove	Within Bypass Development Area	2	Removal	Yes
3181	Fagus sylvatica	European Beech	36	-	-	-	-	-	4.0	2.4	Poor	Fair	Poor	Fair	Minor deadwood. Covered in vines. Broken branch	Remove	Within Bypass Development Area	2	Removal	Yes
3182	Pinus strobus	White Pine	50	-	-	-	-	-	3.0	3.0	Poor	Poor	Poor	Poor	Minor deadwood. Covered in vines. In decline	Remove	Within Bypass Development Area	2	Removal	Yes
3183	Juglans nigra	Black Walnut	31	-	-	-	-	-	4.0	2.4	Good	Fair	Fair	Fair	Minor deadwood. Covered in vines	Remove	Within Bypass Development Area	2	Removal	Yes
3184	Carya cordiformis	Bitternut Hickory	20	-	-	-	-	-	4.0	1.8	Good	Good	Good	Good	Minor deadwood. Covered in vines	Remove	Within Bypass Development Area	2	Removal	Yes
3185	Juglans nigra	Black Walnut	22	-	-	-	-	-	3.0	2.4	Fair	Fair	Fair	Fair	Minor deadwood. Covered in vines	Remove	Within Bypass Development Area	2	Removal	Yes
3186	Fraxinus pennsylvanica	Green Ash	16	-	-	-	-	-	3.0	1.8	Fair	Fair	Fair	Fair	Minor deadwood	Remove	Within Bypass Development Area	2	Removal	Yes
3187	Juglans nigra	Black Walnut	38	-	-	-	-	-	6.0	2.4	Fair	Fair	Good	Fair	Minor deadwood	Remove	Within Bypass Development Area	2	Removal	Yes
3188	Juglans nigra	Black Walnut	23	-	-	-	-	-	5.0	2.4	Fair	Fair	Fair	Fair	Minor deadwood	Remove	Within Bypass Development Area	2	Removal	Yes
3189	Juglans nigra	Black Walnut	18	-	-	-	-	-	3.0	1.8	Fair	Fair	Fair	Fair	Minor deadwood	Remove	Within Bypass Development Area	2	Removal	Yes
3190	Prunus sp.	Cherry sp.	17	-	-	-	-	-	2.0	1.8	Fair	Fair	Fair	Fair	Minor deadwood	Remove	Within Bypass Development Area	2	Removal	Yes
3191	Juglans nigra	Black Walnut	17	-	-	-	-	-	2.0	1.8	Fair	Fair	Fair	Fair	Minor deadwood	Remove	Within Bypass Development Area	2	Removal	Yes
3192	Fraxinus pennsylvanica	Green Ash	15	-	-	-	-	-	3.0	1.8	Fair	Fair	Good	Fair	Minor deadwood	Remove	Within Bypass Development Area	2	Removal	Yes
3193	Juglans nigra	Black Walnut	23	-	-	-	-	-	2.0	2.4	Fair	Fair	Fair	Fair	Minor deadwood	Remove	Within Bypass Development Area	2	Removal	Yes
3194	Fraxinus pennsylvanica	Green Ash	17	-	-	-	-	-	2.0	1.8	Fair	Fair	Poor	Fair	Minor deadwood	Remove	Within Bypass Development Area	2	Removal	Yes
3195	Fraxinus pennsylvanica	Green Ash	21	-	-	-	-	-	4.0	1.8	Fair	Fair	Fair	Fair	Minor deadwood	Remove	Within Bypass Development Area	2	Removal	Yes
3196	Fraxinus pennsylvanica	Green Ash	15	-	-	-	-	-	2.0	1.8	Fair	Fair	Fair	Fair	Minor deadwood	Remove	Within Bypass Development Area	2	Removal	Yes
3197	Fraxinus pennsylvanica	Green Ash	15	-	-	-	-	-	2.0	1.8	Fair	Fair	Fair	Fair	Minor deadwood	Remove	Within Bypass Development Area	2	Removal	Yes
3198	Juglans nigra	Black Walnut	17	-	-	-	-	-	2.0	1.8	Poor	Fair	Fair	Fair	Minor deadwood. Trunk wounds	Remove	Within Bypass Development Area	2	Removal	Yes
3199	Juglans nigra	Black Walnut	18	-	-	-	-	-	2.0	1.8	Fair	Fair	Fair	Fair	Minor deadwood	Remove	Within Bypass Development Area	2	Removal	Yes
3200	Fraxinus pennsylvanica	Green Ash	16	-	-	-	-	-	2.0	1.8	Fair	Fair	Poor	Fair	Minor deadwood	Remove	Within Bypass Development Area	2	Removal	Yes
3201	Juglans nigra	Black Walnut	38	-	-	-	-	-	6.0	2.4	Fair	Fair	Fair	Fair	Minor deadwood	Protect - Hoarding		-	N/A	Yes
3202	Juglans nigra	Black Walnut	42	25	-	-	-	-	6.0	3.0	Fair	Fair	Fair	Fair	Minor deadwood. Co-dominant	Protect - Hoarding		-	N/A	Yes
3203	Juglans nigra	Black Walnut	16	-	-	-	-	-	2.0	1.8	Fair	Fair	Poor	Fair	Minor deadwood. Covered in vines	Protect - Hoarding		-	N/A	Yes
3204	Juglans nigra	Black Walnut	36	-	-	-	-	-	7.0	2.4	Fair	Fair	Fair	Fair	Minor deadwood. Covered in vines	Protect - Hoarding		-	N/A	Yes
3204A	Juglans nigra	Black Walnut	30	-	-	-	-	-	5.0	2.4	Fair	Fair	Poor	Fair	Minor deadwood. Covered in vines	Protect - Hoarding		-	N/A	Yes
3205	Juglans nigra	Black Walnut	26	-	-	-	-	-	4.0	2.4	Fair	Fair	Poor	Fair	Minor deadwood. Covered in vines	Protect - Hoarding		-	N/A	Yes
3206	Fraxinus pennsylvanica	Green Ash	16	-	-	-	-	-	2.0	1.8	Fair	Fair	Poor	Fair	Minor deadwood. Trunk lean	Protect - Hoarding		-	N/A	Yes
3207	Fraxinus pennsylvanica	Green Ash	17	-	-	-	-	-	2.0	1.8	Fair	Fair	Poor	Fair	Minor deadwood. Trunk lean	Protect - Reduced TPZ	Adjacent to Bypass Development	-	Injury	Yes
3208	Juglans nigra	Black Walnut	36	21	-	-	-	-	7.0	2.4	Fair	Fair	Poor	Fair	Minor deadwood. Covered in vines. Co-dominant	Protect - Reduced TPZ	Adjacent to Bypass Development	-	Injury	Yes
3209	Juglans nigra	Black Walnut	22	-	-	-	-	-	4.0	2.4	Fair	Fair	Poor	Fair	Minor deadwood. Covered in vines	Remove	Within Bypass Development Area	2	Removal	Yes
3210	Fraxinus pennsylvanica	Green Ash	15	-	-	-	-	-	3.0	1.8	Fair	Fair	Poor	Fair	Minor deadwood. Covered in vines	Remove	Within Bypass Development Area	2	Removal	Yes
3211	Fraxinus pennsylvanica	Green Ash	20	-	-	-	-	-	3.0	1.8	Fair	Fair	Poor	Fair	Minor deadwood. Covered in vines	Remove	Within Bypass Development Area	2	Removal	Yes
3212	Fraxinus pennsylvanica	Green Ash	22	-	-	-	-	-	4.0	2.4	Fair	Fair	Fair	Fair	Minor deadwood. Covered in vines	Remove	Within Bypass Development Area	2	Removal	Yes
3213	Juglans nigra	Black Walnut	49	-	-	-	-	-	7.0	3.0	Fair	Fair	Poor	Fair	Minor deadwood. Covered in vines	Remove	Within Bypass Development Area	2	Removal	Yes
3214	Fagus sylvatica	European Beech	60	-	-	-	-	-	1.0	3.6	Poor	Poor	Poor	Poor	Major deadwood. Covered in vines. Broken branch. In decline	Remove	Within Bypass Development Area	2	Removal	Yes
3215	Fagus sylvatica	European Beech	75	33	-	-	-	-	1.0	4.8	Poor	Poor	Poor	Poor	Major deadwood. Covered in vines. Broken branch. In decline. Trunk wounds	Remove	Within Bypass Development Area	2	Removal	Yes
3216	Fagus sylvatica	European Beech	45	-	-	-	-	-	1.0	3.0	Poor	Poor	Poor	Poor	Major deadwood. Covered in vines. Broken branch. In decline. Trunk wounds	Remove	Within Bypass Development Area	2	Removal	Yes
3217	Quercus alba	White Oak	58	-	-	-	-	-	6.0	3.6	Good	Good	Good	Good	Minor deadwood	Remove	Within Bypass Development Area	2	Removal	Yes
3218	Juglans nigra	Black Walnut	35	-	-	-	-	-	7.0	2.4	Good	Fair	Fair	Fair	Minor deadwood	Remove	Within Bypass Development Area	2	Removal	Yes
3219	Juglans nigra	Black Walnut	21	-	-	-	-	-	4.0	1.8	Fair	Fair	Poor	Fair	Minor deadwood. Covered in vines	Remove	Within Bypass Development Area	2	Removal	Yes
3220	Juglans nigra	Black Walnut	60	-	-	-	-	-	9.0	3.6	Fair	Fair	Poor	Fair	Minor deadwood	Remove	Within Bypass Development Area	2	Removal	Yes
3221	Fraxinus pennsylvanica	Green Ash	45	30	-	-	-	-	1.0	3.0	Dead	Dead	Dead	Dead	EAB	Remove - Dead	Hazard	-	N/A	Yes
3222	Carya ovala	Shagbark Hickory	21	-	-	-	-	-	3.0	1.8	Good	Good	Good	Good	Minor deadwood	Remove	Within Bypass Development Area	2	Removal	Yes
3223	Juglans nigra	Black Walnut	50	-	-	-	-	-	6.0	3.0	Good	Fair	Fair	Fair	Minor deadwood	Remove	Within Bypass Development Area	2	Removal	Yes
3224	Juglans nigra	Black Walnut	16	-	-	-	-	-	2.0	1.8	Fair	Fair	Fair	Fair	Minor deadwood	Remove	Within Bypass Development Area	2	Removal	Yes
3225	Tilia americana	Basswood	18	-	-	-	-	-	2.0	1.8	Good	Fair	Good	Fair	Minor deadwood	Remove	Within Bypass Development Area	2	Removal	Yes
3226	Tilia americana	Basswood	53	-	-	-	-	-	6.0	3.6	Good	Fair	Good	Fair	Minor deadwood	Remove	Within Bypass Development Area	2	Removal	Yes
3227	Quercus macrocarpa	Bur Oak	27	-	-	-	-	-	3.0	2.4	Good	Fair	Good	Fair	Minor deadwood	Remove	Within Bypass Development Area	2	Removal	Yes
3228	Tilia americana	Basswood	31	-	-	-	-	-	3.0	2.4	Good	Fair	Good	Fair	Minor deadwood	Remove	Within Bypass Development Area	2		

TABLE A. Detailed Tree Inventory - Norval West Bypass
Norval, Ontario
Data collected: May 21st -24th & 28th 2024

Tree ID	Botanical Name	Common Name	DBH (cm)						Dripline Radius (m)	Minimum TPZ (m)	Condition				Comments	Action	Removal/Injury Justification	Compensation Trees	Permit Type	Within Woodland
			Stem 1	Stem 2	Stem 3	Stem 4	Stem 5	Stem 6			Trunk Integrity	Crown Structure	Crown Vigour	Overall Condition						
3274	Juglans nigra	Black Walnut	16	-	-	-	-	-	1.0	1.8	Fair	Fair	Fair	Fair	Minor deadwood. Covered in vines	Remove	Within Bypass Development Area	2	Removal	Yes
3275	Juglans nigra	Black Walnut	42	-	-	-	-	-	7.0	3.0	Fair	Fair	Poor	Fair	Minor deadwood	Remove	Within Bypass Development Area	2	Removal	Yes
3276	Juglans nigra	Black Walnut	44	-	-	-	-	-	7.0	3.0	Fair	Fair	Poor	Fair	Minor deadwood	Remove	Within Bypass Development Area	2	Removal	Yes
3277	Juglans nigra	Black Walnut	15	-	-	-	-	-	2.0	1.8	Fair	Fair	Poor	Fair	Minor deadwood	Remove	Within Bypass Development Area	2	Removal	Yes
3278	Juglans nigra	Black Walnut	24	-	-	-	-	-	2.0	2.4	Fair	Fair	Poor	Fair	Minor deadwood	Protect - Hoarding	Within Bypass Development Area	-	N/A	Yes
3279	Pinus strobus	White Pine	49	-	-	-	-	-	5.0	3.0	Poor	Poor	Poor	Poor	Minor deadwood. Thin crown. In decline					
3280	Prunus sp.	Cherry sp.	15	-	-	-	-	-	1.0	1.8	Poor	Poor	Poor	Poor	Minor deadwood. Epicormic shooting. In decline	Remove	Within Bypass Development Area	2	Removal	Yes
3281	Juglans nigra	Black Walnut	16	-	-	-	-	-	1.0	1.8	Poor	Poor	Poor	Poor	Minor deadwood. Epicormic shooting. In decline	Remove	Within Bypass Development Area	2	Removal	Yes
3282	Juglans nigra	Black Walnut	23	-	-	-	-	-	3.0	2.4	Poor	Poor	Poor	Poor	Minor deadwood. Epicormic shooting. In decline	Remove	Within Bypass Development Area	2	Removal	Yes
3283	Juglans nigra	Black Walnut	37	-	-	-	-	-	5.0	2.4	Fair	Fair	Poor	Fair	Minor deadwood	Remove	Within Bypass Development Area	2	Removal	Yes
3284	Juglans nigra	Black Walnut	26	-	-	-	-	-	5.0	2.4	Fair	Fair	Poor	Fair	Minor deadwood	Remove	Within Bypass Development Area	2	Removal	Yes
3285	Juglans nigra	Black Walnut	32	-	-	-	-	-	5.0	2.4	Fair	Fair	Poor	Fair	Minor deadwood	Remove	Within Bypass Development Area	2	Removal	Yes
3286	Juglans nigra	Black Walnut	20	-	-	-	-	-	5.0	1.8	Fair	Fair	Poor	Fair	Minor deadwood	Remove	Within Bypass Development Area	2	Removal	Yes
3287	Juglans nigra	Black Walnut	38	-	-	-	-	-	5.0	2.4	Fair	Fair	Poor	Fair	Minor deadwood	Remove	Within Bypass Development Area	2	Removal	Yes
3288	Juglans nigra	Black Walnut	16	-	-	-	-	-	2.0	1.8	Fair	Fair	Poor	Fair	Minor deadwood	Remove	Within Bypass Development Area	2	Removal	Yes
3289	Juglans nigra	Black Walnut	24	-	-	-	-	-	4.0	2.4	Fair	Fair	Poor	Fair	Minor deadwood	Remove	Within Bypass Development Area	2	Removal	Yes
3290	Juglans nigra	Black Walnut	24	-	-	-	-	-	4.0	2.4	Fair	Fair	Poor	Fair	Minor deadwood	Remove	Within Bypass Development Area	2	Removal	Yes
3291	Juglans nigra	Black Walnut	32	-	-	-	-	-	6.0	2.4	Fair	Fair	Poor	Fair	Minor deadwood	Remove	Within Bypass Development Area	2	Removal	Yes
3292	Juglans nigra	Black Walnut	60	-	-	-	-	-	7.0	3.6	Fair	Fair	Poor	Fair	Minor deadwood	Remove	Within Bypass Development Area	2	Removal	Yes
3293	Tilia americana	Basswood	35	-	-	-	-	-	5.0	2.4	Good	Fair	Good	Fair	Minor deadwood	Remove	Within Bypass Development Area	2	Removal	Yes
3294	Juglans nigra	Black Walnut	26	-	-	-	-	-	3.0	2.4	Good	Fair	Good	Fair	Minor deadwood	Protect - Reduced TPZ	Adjacent to Bypass Development	-	Injury	Yes
3295	Juglans nigra	Black Walnut	39	-	-	-	-	-	4.0	2.4	Fair	Fair	Poor	Fair	Minor deadwood					
3296	Juglans nigra	Black Walnut	32	-	-	-	-	-	4.0	2.4	Fair	Fair	Poor	Fair	Minor deadwood	Protect - Hoarding	Within Bypass Development Area	-	N/A	Yes
3297	Acer saccharum	Sugar Maple	15	-	-	-	-	-	3.0	1.8	Fair	Fair	Good	Fair	Minor deadwood	Protect - Hoarding		-	N/A	Yes
3298	Juglans nigra	Black Walnut	30	-	-	-	-	-	3.0	2.4	Fair	Fair	Good	Fair	Minor deadwood	Protect - Hoarding		-	N/A	Yes
3299	Acer saccharum	Sugar Maple	20	-	-	-	-	-	3.0	1.8	Good	Fair	Good	Good	Minor deadwood	Protect - Hoarding		-	N/A	Yes
3300	Juglans nigra	Black Walnut	32	-	-	-	-	-	3.0	2.4	Poor	Poor	Poor	Poor	Minor deadwood. Covered in vines. Trunk wounds	Protect - Hoarding		-	N/A	Yes
3301	Acer saccharum	Sugar Maple	34	-	-	-	-	-	5.0	2.4	Good	Good	Good	Good	Minor deadwood	Remove	Within Bypass Development Area	2	Removal	Yes
3302	Juglans nigra	Black Walnut	28	-	-	-	-	-	3.0	2.4	Good	Good	Fair	Good	Minor deadwood	Remove	Within Bypass Development Area	2	Removal	Yes
3303	Fraxinus pennsylvanica	Green Ash	19	-	-	-	-	-	1.0	1.8	Poor	Poor	Poor	Poor	In decline. EAB. Epicormic shooting	Remove	Within Bypass Development Area	2	Removal	Yes
3304	Juglans nigra	Black Walnut	27	-	-	-	-	-	3.0	2.4	Good	Good	Fair	Good	Minor deadwood	Protect - Reduced TPZ	Adjacent to Bypass Development	-	Injury	Yes
3305	Acer saccharum	Sugar Maple	25	-	-	-	-	-	3.0	2.4	Good	Fair	Good	Good	Minor deadwood					
3306	Thuja occidentalis	Eastern White Cedar	24	-	-	-	-	-	3.0	2.4	Good	Fair	Good	Fair	Minor deadwood	Protect - Hoarding		-	N/A	Yes
3307	Fraxinus pennsylvanica	Green Ash	75	-	-	-	-	-	1.0	4.8	Dead	Dead	Dead	Dead	EAB	Protect - Hoarding		-	N/A	Yes
3308	Juglans nigra	Black Walnut	23	-	-	-	-	-	3.0	2.4	Fair	Fair	Fair	Fair	Minor deadwood	Protect - Hoarding		-	N/A	Yes
3309	Pinus strobus	White Pine	18	-	-	-	-	-	1.0	1.8	Poor	Poor	Poor	Poor	Minor deadwood. Covered in vines. In decline	Protect - Hoarding		-	N/A	Yes
3310	Juglans nigra	Black Walnut	18	-	-	-	-	-	1.0	1.8	Fair	Poor	Poor	Poor	Minor deadwood	Protect - Hoarding		-	N/A	Yes
3311	Juglans nigra	Black Walnut	34	-	-	-	-	-	5.0	2.4	Fair	Fair	Fair	Fair	Minor deadwood	Protect - Hoarding		-	N/A	Yes
3312	Juglans nigra	Black Walnut	18	-	-	-	-	-	3.0	1.8	Fair	Poor	Fair	Fair	Minor deadwood. Covered in vines	Protect - Hoarding		-	N/A	Yes
3313	Pinus strobus	White Pine	15	-	-	-	-	-	1.0	1.8	Fair	Poor	Poor	Poor	Minor deadwood. Covered in vines. In decline	Protect - Hoarding		-	N/A	Yes
3314	Acer saccharum	Sugar Maple	18	-	-	-	-	-	3.0	1.8	Good	Good	Good	Good	Minor deadwood	Protect - Hoarding		-	N/A	Yes
3315	Juglans nigra	Black Walnut	29	-	-	-	-	-	4.0	2.4	Good	Fair	Fair	Fair	Minor deadwood	Protect - Hoarding		-	N/A	Yes
3316	Juglans nigra	Black Walnut	29	-	-	-	-	-	3.0	2.4	Good	Fair	Fair	Fair	Minor deadwood. Covered in vines	Protect - Hoarding		-	N/A	Yes
3317	Juglans nigra	Black Walnut	17	-	-	-	-	-	1.0	1.8	Good	Fair	Fair	Fair	Minor deadwood. Covered in vines	Protect - Hoarding		-	N/A	Yes
3318	Juglans nigra	Black Walnut	20	-	-	-	-	-	2.0	1.8	Good	Fair	Fair	Fair	Minor deadwood. Covered in vines	Protect - Hoarding		-	N/A	Yes
3319	Juglans nigra	Black Walnut	21	-	-	-	-	-	2.0	1.8	Fair	Fair	Fair	Fair	Minor deadwood. Covered in vines	Protect - Hoarding		-	N/A	Yes
3320	Juglans nigra	Black Walnut	20	-	-	-	-	-	2.0	1.8	Fair	Fair	Fair	Fair	Minor deadwood. Covered in vines	Protect - Hoarding		-	N/A	Yes
3321	Juglans nigra	Black Walnut	34	-	-	-	-	-	4.0	2.4	Fair	Fair	Fair	Fair	Minor deadwood. Covered in vines	Protect - Hoarding		-	N/A	Yes
3322	Juglans nigra	Black Walnut	27	-	-	-	-	-	4.0	2.4	Fair	Fair	Fair	Fair	Minor deadwood. Covered in vines	Protect - Hoarding		-	N/A	Yes
3323	Juglans nigra	Black Walnut	16	-	-	-	-	-	2.0	1.8	Fair	Poor	Poor	Poor	Minor deadwood. Covered in vines	Remove	Within Bypass Development Area	2	Removal	Yes
3324	Juglans nigra	Black Walnut	29	-	-	-	-	-	4.0	2.4	Fair	Fair	Fair	Fair	Minor deadwood. Covered in vines	Remove	Within Bypass Development Area	2	Removal	Yes
3325	Juglans nigra	Black Walnut	70	-	-	-	-	-	7.0	4.2	Fair	Fair	Fair	Fair	Minor deadwood. Covered in vines	Protect - Reduced TPZ	Adjacent to Bypass Development	-	Injury	Yes
3326	Juglans nigra	Black Walnut	40	-	-	-	-	-	7.0	2.4	Fair	Fair	Fair	Fair	Minor deadwood. Covered in vines					
3327	Acer saccharum	Sugar Maple	16	-	-	-	-	-	3.0	1.8	Good	Good	Good	Good	Minor deadwood	Remove	Within Bypass Development Area	2	Removal	Yes
3328	Juglans nigra	Black Walnut	37	-	-	-	-	-	5.0	2.4	Fair	Fair	Fair	Fair	Minor deadwood	Remove	Within Bypass Development Area	2	Removal	Yes
3329	Juglans nigra	Black Walnut	22	-	-	-	-	-	3.0</											

TABLE A. Detailed Tree Inventory - Norval West Bypass
Norval, Ontario
Data collected: May 21st -24th & 28th 2024

Tree ID	Botanical Name	Common Name	DBH (cm)						Dripline Radius (m)	Minimum TPZ (m)	Condition				Comments	Action	Removal/Injury Justification	Compensation Trees	Permit Type	Within Woodland
			Stem 1	Stem 2	Stem 3	Stem 4	Stem 5	Stem 6			Trunk Integrity	Crown Structure	Crown Vigour	Overall Condition						
3370	Juglans nigra	Black Walnut	38	-	-	-	-	-	4.0	2.4	Fair	Fair	Fair	Fair	Minor deadwood. Covered in vines	Remove	Within Bypass Development Area	2	Removal	Yes
3371	Juglans nigra	Black Walnut	35	-	-	-	-	-	5.0	2.4	Fair	Fair	Fair	Fair	Minor deadwood. Covered in vines	Remove	Within Bypass Development Area	2	Removal	Yes
3372	Juglans nigra	Black Walnut	61	-	-	-	-	-	8.0	3.6	Fair	Fair	Fair	Fair	Minor deadwood. Covered in vines	Remove	Within Bypass Development Area	2	Removal	Yes
3373	Juglans nigra	Black Walnut	25	-	-	-	-	-	3.0	2.4	Fair	Poor	Poor	Fair	Minor deadwood. Covered in vines	Remove	Within Bypass Development Area	2	Removal	Yes
3374	Juglans nigra	Black Walnut	22	18	-	-	-	-	3.0	2.4	Fair	Poor	Poor	Fair	Minor deadwood. Covered in vines. Co-dominant	Remove	Within Bypass Development Area	2	Removal	Yes
3375	Juglans nigra	Black Walnut	15	-	-	-	-	-	2.0	1.8	Fair	Poor	Poor	Fair	Minor deadwood. Covered in vines	Remove	Within Bypass Development Area	2	Removal	Yes
3376	Juglans nigra	Black Walnut	60	25	-	-	-	-	1.0	3.6	Dead	Dead	Dead	Dead		Remove - Dead	Hazard	-	N/A	Yes
3377	Juglans nigra	Black Walnut	52	-	-	-	-	-	7.0	3.6	Fair	Fair	Fair	Fair	Minor deadwood. Covered in vines	Remove	Within Bypass Development Area	2	Removal	Yes
3378	Juglans nigra	Black Walnut	50	-	-	-	-	-	6.0	3.0	Fair	Fair	Fair	Fair	Minor deadwood. Covered in vines	Remove	Within Bypass Development Area	2	Removal	Yes
3379	Juglans nigra	Black Walnut	50	-	-	-	-	-	7.0	3.0	Fair	Fair	Fair	Fair	Minor deadwood. Covered in vines	Remove	Within Bypass Development Area	2	Removal	Yes
3380	Juglans nigra	Black Walnut	15	-	-	-	-	-	1.0	1.8	Fair	Poor	Poor	Poor	Minor deadwood. Covered in vines	Remove	Within Bypass Development Area	2	Removal	Yes
3381	Juglans nigra	Black Walnut	48	-	-	-	-	-	7.0	3.0	Fair	Fair	Fair	Fair	Minor deadwood. Covered in vines	Remove	Within Bypass Development Area	2	Removal	Yes
3382	Juglans nigra	Black Walnut	50	-	-	-	-	-	7.0	3.0	Fair	Fair	Fair	Fair	Minor deadwood	Protect - Hoarding		-	N/A	Yes
3383	Juglans nigra	Black Walnut	84	-	-	-	-	-	11.0	5.4	Fair	Fair	Fair	Fair	Minor deadwood. Covered in vines. Broken branch	Protect - Reduced TPZ	Adjacent to Bypass Development	-	Injury	Yes
3384	Tilia americana	Basswood	20	20	20	-	-	-	4.0	1.8	Fair	Fair	Good	Fair	Minor deadwood. Covered in vines. Co-dominant	Protect - Hoarding		-	N/A	Yes
3385	Juglans nigra	Black Walnut	16	-	-	-	-	-	2.0	1.8	Fair	Fair	Fair	Fair	Minor deadwood. Covered in vines	Protect - Hoarding		-	N/A	Yes
3386	Juglans nigra	Black Walnut	33	-	-	-	-	-	3.0	2.4	Fair	Poor	Fair	Fair	Minor deadwood. Covered in vines	Remove	Within Bypass Development Area	2	Removal	Yes
3387	Juglans nigra	Black Walnut	70	-	-	-	-	-	7.0	4.2	Fair	Fair	Fair	Fair	Minor deadwood. Covered in vines	Remove	Within Bypass Development Area	2	Removal	Yes
3388	Juglans nigra	Black Walnut	43	-	-	-	-	-	6.0	3.0	Fair	Fair	Fair	Fair	Minor deadwood. Covered in vines. Broken branch	Remove	Within Bypass Development Area	2	Removal	Yes
3389	Juglans nigra	Black Walnut	29	-	-	-	-	-	4.0	2.4	Fair	Fair	Poor	Fair	Minor deadwood. Covered in vines. Broken branch	Remove	Within Bypass Development Area	2	Removal	Yes
3390	Juglans nigra	Black Walnut	36	-	-	-	-	-	3.0	2.4	Fair	Poor	Poor	Fair	Minor deadwood. Covered in vines. Broken branch	Remove	Within Bypass Development Area	2	Removal	Yes
3391	Juglans nigra	Black Walnut	21	-	-	-	-	-	3.0	1.8	Fair	Fair	Fair	Fair	Minor deadwood. Covered in vines	Remove	Within Bypass Development Area	2	Removal	Yes
3392	Juglans nigra	Black Walnut	20	-	-	-	-	-	2.0	1.8	Poor	Poor	Poor	Fair	Minor deadwood. Covered in vines. Trunk lean	Remove	Within Bypass Development Area	2	Removal	Yes
3393	Juglans nigra	Black Walnut	27	-	-	-	-	-	2.0	2.4	Fair	Fair	Fair	Fair	Minor deadwood. Covered in vines	Remove	Within Bypass Development Area	2	Removal	Yes
3394	Juglans nigra	Black Walnut	32	-	-	-	-	-	4.0	2.4	Fair	Fair	Fair	Fair	Minor deadwood. Covered in vines	Remove	Within Bypass Development Area	2	Removal	Yes
3395	Juglans nigra	Black Walnut	33	-	-	-	-	-	4.0	2.4	Fair	Fair	Fair	Fair	Minor deadwood. Covered in vines	Remove	Within Bypass Development Area	2	Removal	Yes
3396	Juglans nigra	Black Walnut	52	-	-	-	-	-	7.0	3.6	Fair	Fair	Fair	Fair	Minor deadwood	Remove	Within Bypass Development Area	2	Removal	Yes
3397	Juglans nigra	Black Walnut	71	-	-	-	-	-	9.0	4.2	Fair	Fair	Fair	Fair	Minor deadwood	Remove	Within Bypass Development Area	2	Removal	Yes
3398	Fraxinus pennsylvanica	Green Ash	43	35	-	-	-	-	1.0	3.0	Dead	Dead	Dead	Dead	EAB	Remove - Dead	Hazard	-	N/A	Yes
3399	Juglans nigra	Black Walnut	22	-	-	-	-	-	3.0	2.4	Fair	Fair	Fair	Fair	Minor deadwood. Covered in vines	Remove	Within Bypass Development Area	2	Removal	Yes
3400	Juglans nigra	Black Walnut	68	-	-	-	-	-	9.0	4.2	Fair	Fair	Fair	Fair	Minor deadwood. Covered in vines	Remove	Within Bypass Development Area	2	Removal	Yes
3401	Juglans nigra	Black Walnut	38	-	-	-	-	-	5.0	2.4	Fair	Fair	Fair	Fair	Minor deadwood. Covered in vines	Remove	Within Bypass Development Area	2	Removal	Yes
3402	Juglans nigra	Black Walnut	32	-	-	-	-	-	4.0	2.4	Fair	Fair	Poor	Fair	Minor deadwood. Covered in vines	Remove	Within Bypass Development Area	2	Removal	Yes
3403	Fraxinus pennsylvanica	Green Ash	44	-	-	-	-	-	1.0	3.0	Dead	Dead	Dead	Dead	EAB	Remove - Dead	Hazard	-	N/A	Yes
3404	Fraxinus pennsylvanica	Green Ash	39	-	-	-	-	-	1.0	2.4	Dead	Dead	Dead	Dead	EAB	Remove - Dead	Hazard	-	N/A	Yes
3405	Prunus sp.	Cherry sp.	38	36	34	-	-	-	3.0	2.4	Fair	Poor	Poor	Poor	Minor deadwood. Co-dominant. Covered in vines	Remove	Within Bypass Development Area	2	Removal	Yes
3406	Juglans nigra	Black Walnut	22	-	-	-	-	-	3.0	2.4	Fair	Fair	Poor	Fair	Minor deadwood. Covered in vines	Remove	Within Bypass Development Area	2	Removal	Yes
3407	Juglans nigra	Black Walnut	45	-	-	-	-	-	7.0	3.0	Fair	Poor	Poor	Poor	Minor deadwood. Covered in vines	Remove	Within Bypass Development Area	2	Removal	Yes
3408	Juglans nigra	Black Walnut	68	-	-	-	-	-	9.0	4.2	Fair	Poor	Poor	Poor	Minor deadwood. Covered in vines	Remove	Within Bypass Development Area	2	Removal	Yes
3409	Juglans nigra	Black Walnut	15	-	-	-	-	-	2.0	1.8	Fair	Poor	Poor	Poor	Minor deadwood. Covered in vines	Remove	Within Bypass Development Area	2	Removal	Yes
3410	Juglans nigra	Black Walnut	26	-	-	-	-	-	3.0	2.4	Fair	Poor	Poor	Poor	Minor deadwood. Covered in vines	Remove	Within Bypass Development Area	2	Removal	Yes
3411	Juglans nigra	Black Walnut	20	15	-	-	-	-	3.0	1.8	Poor	Fair	Fair	Fair	Minor deadwood. Growing in wire fence. Co-dominant	Remove	Within Bypass Development Area	2	Removal	Yes

.1 Total Action Trees

Protect - Hoarding:	139
Protect- Reduced TPZ:	12
Remove - Dead:	9
Remove - Construction:	450
Total:	610

.2 Total Permits Required

Tree Removal Permits (Table A):	32
Tree Removal Permits (Table B):	0
Total Permits Required:	32

.3 Total Compensation Required (Private Trees)

Compensation Required for Woodland Trees Removed (Table A):	874
Total Compensation Required (Qty. of Trees):	874

TABLE B. General Tree Inventory - Norval West Bypass
Norval, Ontario
Data collected: May 21st -24th & 28th 2024

Vegetation Unit 1

Quantity	Botanical Name	Common Name	DBH Range (cm)	Condition				Comments	Action	Justification	# of Trees Removed	Ownership
				Trunk Integrity	Crown Structure	Crown Vigour	Overall Condition					
2	<i>Pinus nigra</i>	Austrian Pine	51-60	Fair	Fair	Good	Fair	Hydro pruned	Protect - Hoarding		-	Private
1	<i>Pinus nigra</i>	Austrian Pine	51-60	Fair	Fair	Good	Fair	Hydro pruned	Remove	Within Proposed Roadway	1	Private

Vegetation Unit 2

Quantity	Botanical Name	Common Name	DBH Range (cm)	Condition				Comments	Action	Justification	# of Trees Removed	Ownership
				Trunk Integrity	Crown Structure	Crown Vigour	Overall Condition					
3	<i>Picea glauca</i>	White Spruce	41-50	Good	Good	Good	Good		Protect - No Hoarding		-	Private

Vegetation Unit 3

Quantity	Botanical Name	Common Name	DBH Range (cm)	Condition				Comments	Action	Justification	# of Trees Removed	Ownership
				Trunk Integrity	Crown Structure	Crown Vigour	Overall Condition					
1	<i>Pinus nigra</i>	Austrian Pine	21-30	Fair	Fair	Fair	Fair	Naturalized	Protect - Hoarding		-	Private
1	<i>Picea pungens</i>	Colorado Spruce	21-30	Fair	Fair	Fair	Fair	Heavy lean	Protect - Hoarding		-	Private
1	<i>Picea abies</i>	Norway Spruce	21-30	Poor	Poor	Fair	Fair	Naturalized	Protect - Hoarding		-	Private
8	<i>Thuja occidentalis</i>	Eastern White Cedar	11-15	Good	Good	Good	Good	Hedge	Protect - Hoarding		-	Private
1	<i>Malus sp.</i>	Apple sp.	70-80	Fair	Fair	Fair	Fair	Naturalized	Remove	Within Proposed Roadway	1	Private
2	<i>Picea abies</i>	Norway Spruce	21-30	Poor	Poor	Fair	Fair	Naturalized	Remove	Within Proposed Roadway	2	Private
7	<i>Thuja occidentalis</i>	Eastern White Cedar	11-15	Good	Good	Good	Good	Hedge	Remove	Within Proposed Roadway	7	Private

Vegetation Unit 4

Quantity	Botanical Name	Common Name	DBH Range (cm)	Condition				Comments	Action	Justification	# of Trees Removed	Ownership
				Trunk Integrity	Crown Structure	Crown Vigour	Overall Condition					
15	<i>Syringa vulgaris</i>	Common Lilac	1-5	Poor	Poor	Good	Poor	Naturalized	Protect - Hoarding		-	Private
15	<i>Rhamnus cathartica</i>	European Buckthorn	1-5	Poor	Poor	Good	Poor	Naturalized	Protect - Hoarding		-	Private
15	<i>Picea abies</i>	Norway Spruce	6-10	Poor	Poor	Good	Poor	Naturalized	Protect - Hoarding		-	Private
15	<i>Juglans nigra</i>	Black Walnut	16-20	Poor	Poor	Fair	Poor	Hydro pruned	Protect - Hoarding		-	Private

Vegetation Unit 5

Quantity	Botanical Name	Common Name	DBH Range (cm)	Condition				Comments	Action	Justification	# of Trees Removed	Ownership
				Trunk Integrity	Crown Structure	Crown Vigour	Overall Condition					
6	<i>Pinus nigra</i>	Austrian Pine	21-30	Fair	Fair	Good	Fair	Landscape planting with cemetery	Protect - Hoarding		-	Private
1	<i>Pinus sylvestris</i>	Scots Pine	16-20	Fair	Fair	Good	Fair	Landscape planting with cemetery	Protect - Hoarding		-	Private
1	<i>Pinus nigra</i>	Austrian Pine	21-30	Fair	Fair	Good	Fair	Landscape planting with cemetery	Remove	Within Proposed Roadway	1	Private
1	<i>Pinus sylvestris</i>	Scots Pine	16-20	Fair	Fair	Good	Fair	Landscape planting with cemetery	Remove	Within Proposed Roadway	1	Private

Vegetation Unit 6

Quantity	Botanical Name	Common Name	DBH Range (cm)	Condition				Comments	Action	Justification	# of Trees Removed	Ownership
				Trunk Integrity	Crown Structure	Crown Vigour	Overall Condition					
3	<i>Juniperus sp.</i>	Juniper sp.	6-10	Good	Good	Good	Good	Landscape planting	Protect - Hoarding		-	Private

Vegetation Unit 7

			DBH Range	Condition							# of Trees	
--	--	--	-----------	-----------	--	--	--	--	--	--	------------	--

TABLE B. General Tree Inventory - Norval West Bypass
Norval, Ontario
Data collected: May 21st -24th & 28th 2024

Vegetation Unit 1

Quantity	Botanical Name	Common Name	DBH Range (cm)	Condition				Comments	Action	Justification	# of Trees Removed	Ownership
				Trunk Integrity	Crown Structure	Crown Vigour	Overall Condition					
8	<i>Juniperus sp.</i>	Juniper sp.	1-5	Good	Good	Good	Good	Landscape planting	Protect - Hoarding		-	Private

Vegetation Unit 8

Quantity	Botanical Name	Common Name	DBH Range (cm)	Condition				Comments	Action	Justification	# of Trees Removed	Ownership
				Trunk Integrity	Crown Structure	Crown Vigour	Overall Condition					
68	<i>Syringa vulgaris</i>	Common Lilac	1-5	Good	Good	Good	Good	Landscape hedge row	Protect - Hoarding		-	Private
7	<i>Syringa vulgaris</i>	Common Lilac	1-5	Good	Good	Good	Good	Landscape hedge row	Protect - Hoarding	Within Proposed Driveway	7	Private

.1 Total Action Trees	
Protect - Hoarding:	166
Protect - No Hoarding	3
Remove - Construction:	13
Total:	182